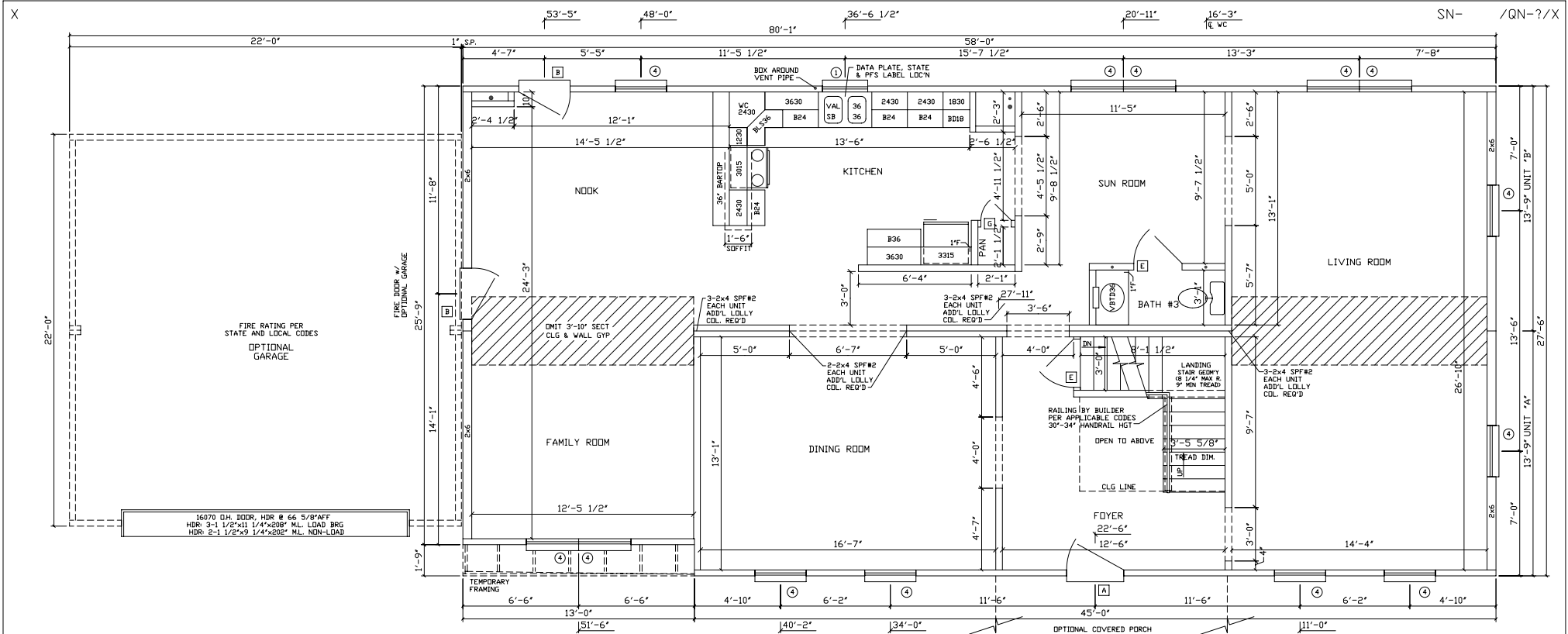


JEFFERSON 1A			
WINDOWS	EXT. DOORS	INT. DOORS	KIT. CABIN.
(23) - #4	(2) - STD. 'A'	(14) - PASSAGE	21.75 FT - WALL CAB
(3) - #1	(2) - STD. 'B'	(3) - SLIDER	19.5 FT - BASE CAB.
			7.5 FT 36" BARTOP
			2.5 FT OF STD C-TOP



- NOTES:
- 2x4 SPF#2 EXT WALLS @ 16" O.C./2x3 MARR WALLS(EXCEPT AS NOTED)
 - 8'-0" CLG HT.
 - 2x10 SPF#2 FLOOR JOISTS @ 16" O.C.
 - 7-D SINGLE HUNG WINDOWS (#1=24210, #2=2842, #3=3048, #4=2852, #11=2558C)
 - CGL GIRDER OVER FR/NOOK TO BE: 2-1 1/2"x11 1/4"x16'-8"/2-1 1/2"x11 1/4"x28'-0" ML.
 - CGL GIRDER OVER LR TO BE: 4-1 1/2"x11 1/4"x16'-8"/2-1 1/2"x11 1/4"x19'-4" ML.
 - CEILING DRYWALL WILL BE OMITTED FOR ALL ON-SITE PLUMBING CONNECTIONS

excel
Home
 FROM THE INSIDE

R.R.#2 BOX 683
 LIVERPOOL, PA 17045
 (717) 444-3395
 FAX (717) 444-7577
 WWW.EXCELHOMES.COM

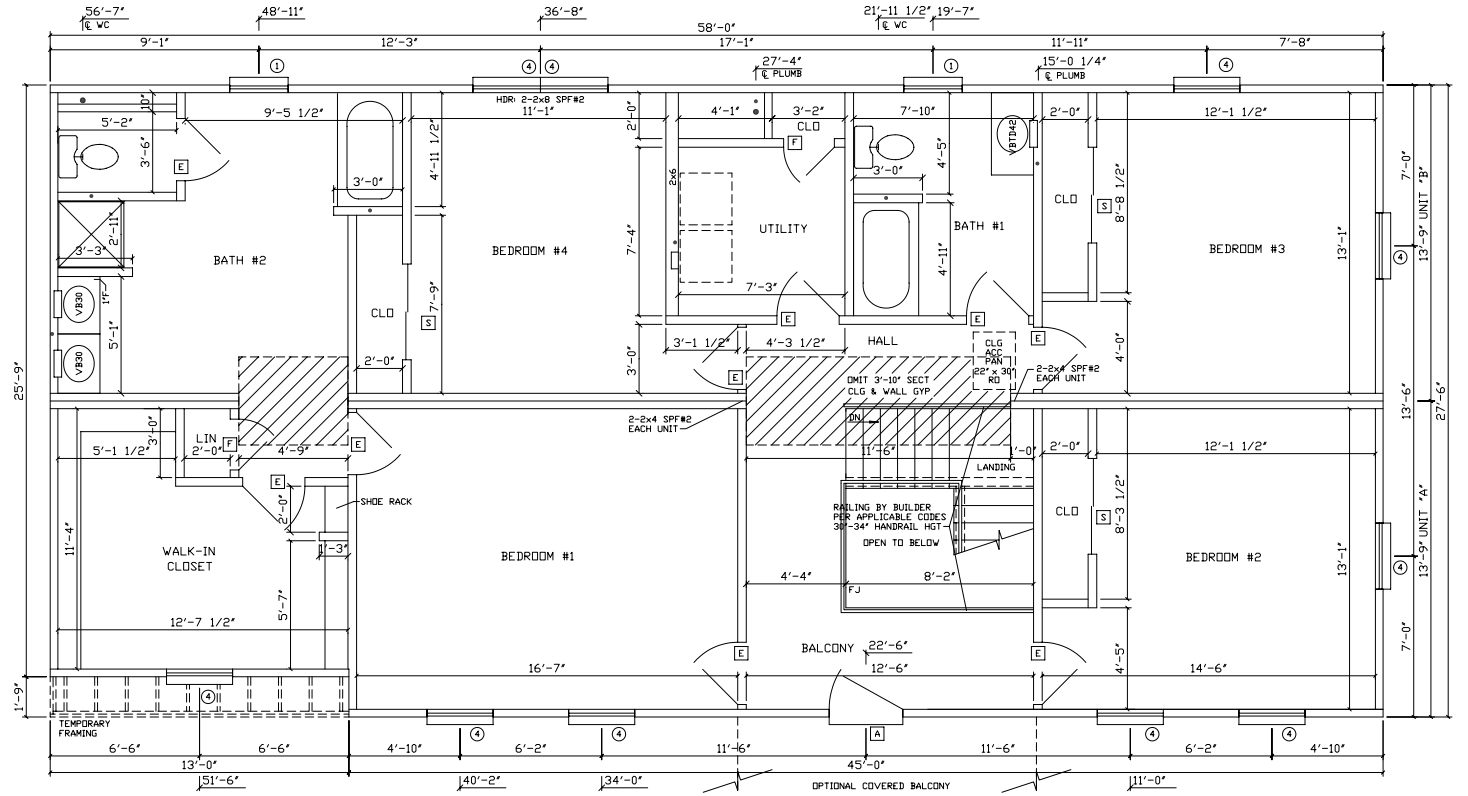
01/14/02 0019

27⁶58 JEFFERSON 1A
 1ST STORY

DRAWN BY:	CHECKED BY:	DATE:	SCALE: 1/4"=1'-0"
REVISIONS/REV. STD 10-31-01			DISK NO. JEFF1A

X

SN- /QN-?/X



- NOTES:
1. 2x4 SPF#2 EXT WALLS @ 16" O.C./2x3 MARR WALLS
 2. 8'-0" CLG HT.
 3. 2x10 SPF#2 FLOOR JOISTS @ 16" O.C.
 4. ROOF SYSTEM TO BE 24" D.C.
 5. 7'-D SINGLE HUNG WINDOWS (#1=24210, #2=2842, #3=3048, #4=2852, #11=2558C)
 6. FLR GIRDER UNDER BR#2/BR#3 TO BE: 4-1 1/2"x9 1/4"x19'-4 1/2"-1 1/2"x9 1/4"x16'-8" M.L.
 7. FLR GIRDER UNDER BATH#2/WIC TO BE: 2-1 1/2"x9 1/4"x16'-0"/2-1 1/2"x9 1/4"x19'-4" M.L.
 8. CLG BEAM OVER HALL TO BE: 2-1 1/2"x11 1/4"x18'-0" M.L.

excel R.R.#2 BOX 683
 LIVERPOOL, PA 17045
 (717) 444-3395
 FAX (717) 444-7577
 FROM THE INSIDE WWW.EXCELHOMES.COM
 02/14/02 0019

27th 58 JEFFERSON 1A
 2ND STORY

DRAWN BY:	CHECKED BY:	DATE:	SCALE: 1/4"=1'-0"
REVISIONS: REV. STD 10-31-01			DISK NO. JEFF1A