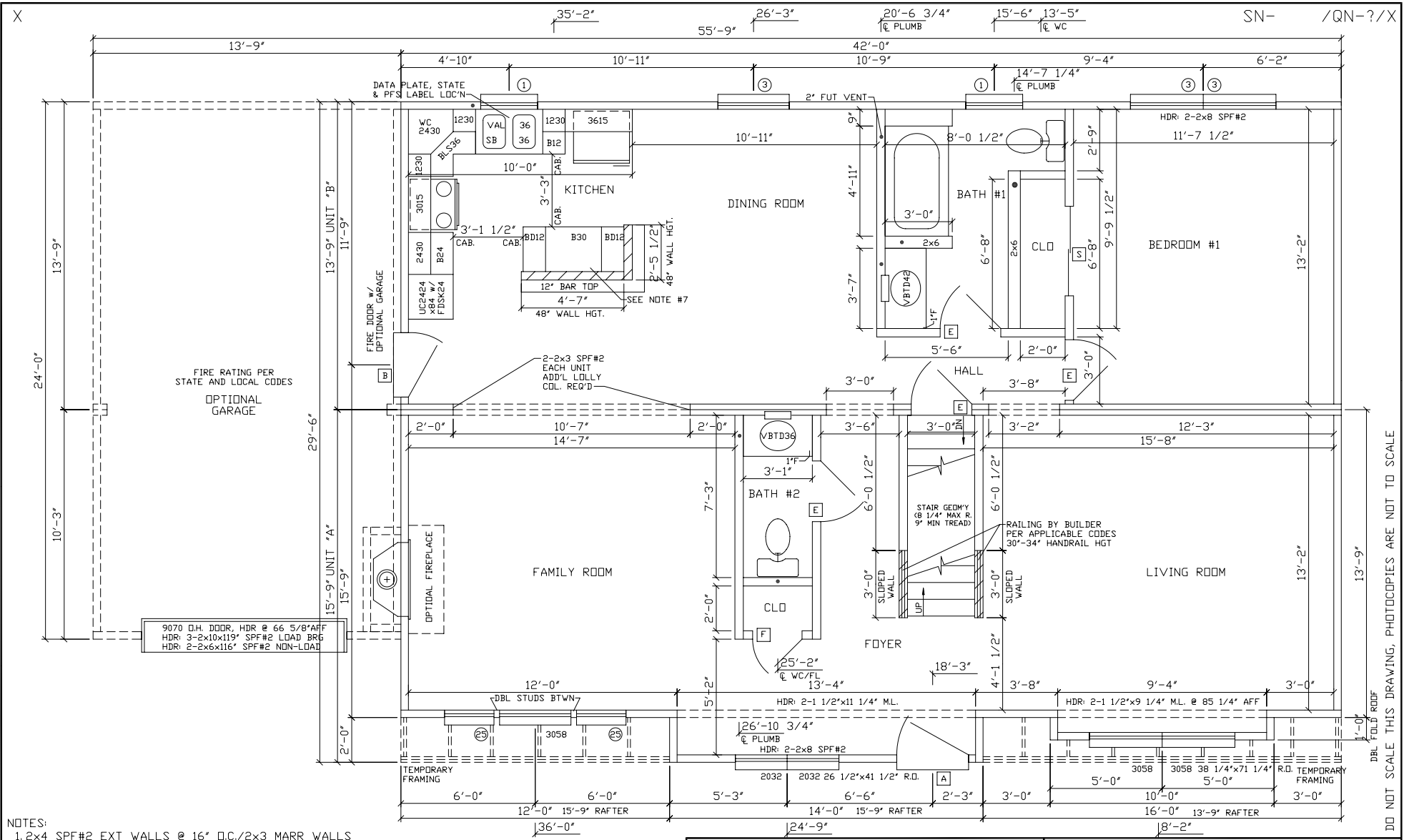


CAPE CHELSEY 1A

WINDOWS	EXT. DOORS	INT. DOORS	KIT. CABIN.
(3) - #3	(1) - STD. 'A'	(5) - PASSAGE	12.5 FT - WALL CAB.
(2) - #1	(1) - STD. 'B'	(1) - SLIDER	14.5 FT - BASE CAB.
(3) - 3058			UC2424x84 w/SHELF KIT
(2) -2058 (#25)			8.5 FT 12" BARTOP w/HALF WALL
(2) - 2032			



NOTES:

- 2x4 SPF#2 EXT WALLS @ 16" O.C./2x3 MARR WALLS
- 8'-0" CLG HT.
- 2x10 SPF#2 FLOOR JOISTS @ 16" O.C.
- ROOF SYSTEM TO BE 16" D.C.
- 7-D SINGLE HUNG WINDOWS (#1=24210, #2=2842, #3=3048, #4=2852, #11=2558C)
- CLG BEAM OVER LR/KIT TO BE: 4-1 1/2"x9 1/4"x14'-8" / 17'-4" M.L.

excel R.R.#2 BOX 683
LIVERPOOL, PA 17045
(717) 444-3395
FAX (717) 444-7577
FROM THE INSIDE WWW.EXCELHOMES.COM

29⁶42 CAPE CHELSEY 1A

DRAWN BY:	CHECKED BY:	DATE:	SCALE: 1/4"=1'-0"
REVISIONS:			DISK NO: CHELSYA

01/14/02 08:15

DO NOT SCALE THIS DRAWING, PHOTOCOPIES ARE NOT TO SCALE