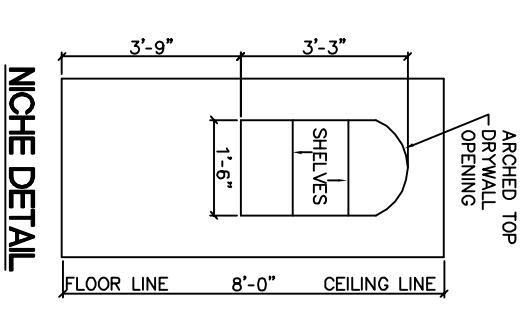
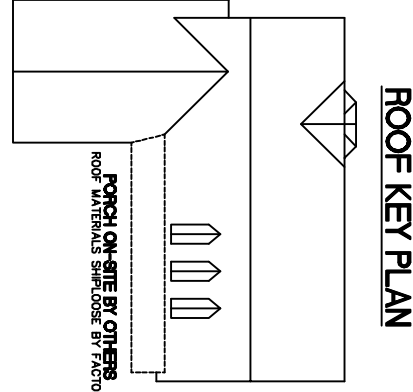
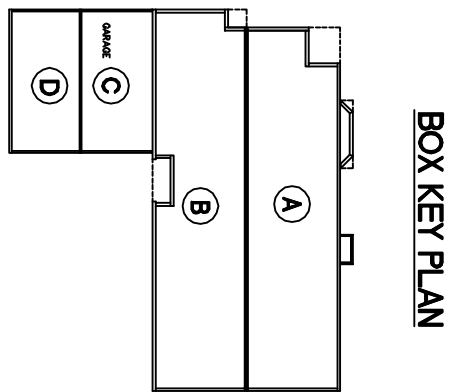
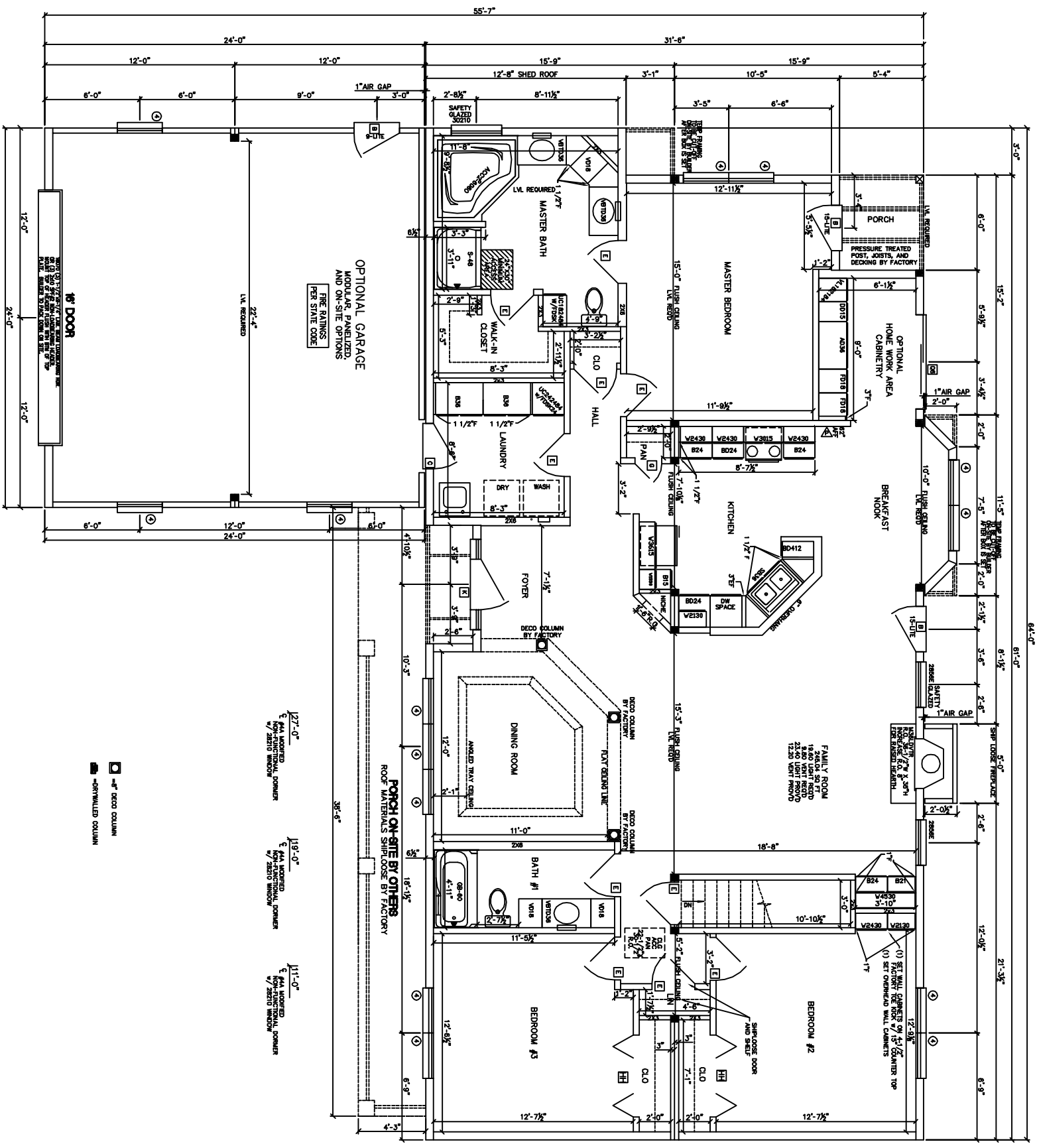


1/8" = 1'-0"
 1/4" = 1'-0" - 9/16" FROM REVERSE SIDE



- NOTES:
1. 2x6" EXT WALLS @ 24" O.C./2x3 MARR WALLS
 2. 8'-0" CLG HT.
 3. 2x10 SPF#2 FLOOR JOISTS @ 16" O.C.
 4. ROOF SYSTEM TO BE 24" O.C.
 5. MW SINGLE HUNG MODULAR WINDOWS (#1=24210, #2=2842, #3=3046, #4=2852, #11=2856E)
 6. ??? MPH WIND ZONE/ALL DOORS & WINDOWS MINIMUM DP ?? IN EXPOSURE ??
 - 7.
 - 8.
 - 9.
 - 10.

excel HOMES

WEB SITE: EXCELHOMES.COM

COPYRIGHT © 2006

THIS DOCUMENT AND THE SUBJECT MATTER CONTAINED HEREIN IS PROPRIETARY AND MAY NOT BE REPRODUCED WITHOUT THE WRITTEN PERMISSION OF EXCEL HOMES LLC

CUSTOMER/PROJECT:

BUILDER:

REV#	DATE	REVISIONS	BY

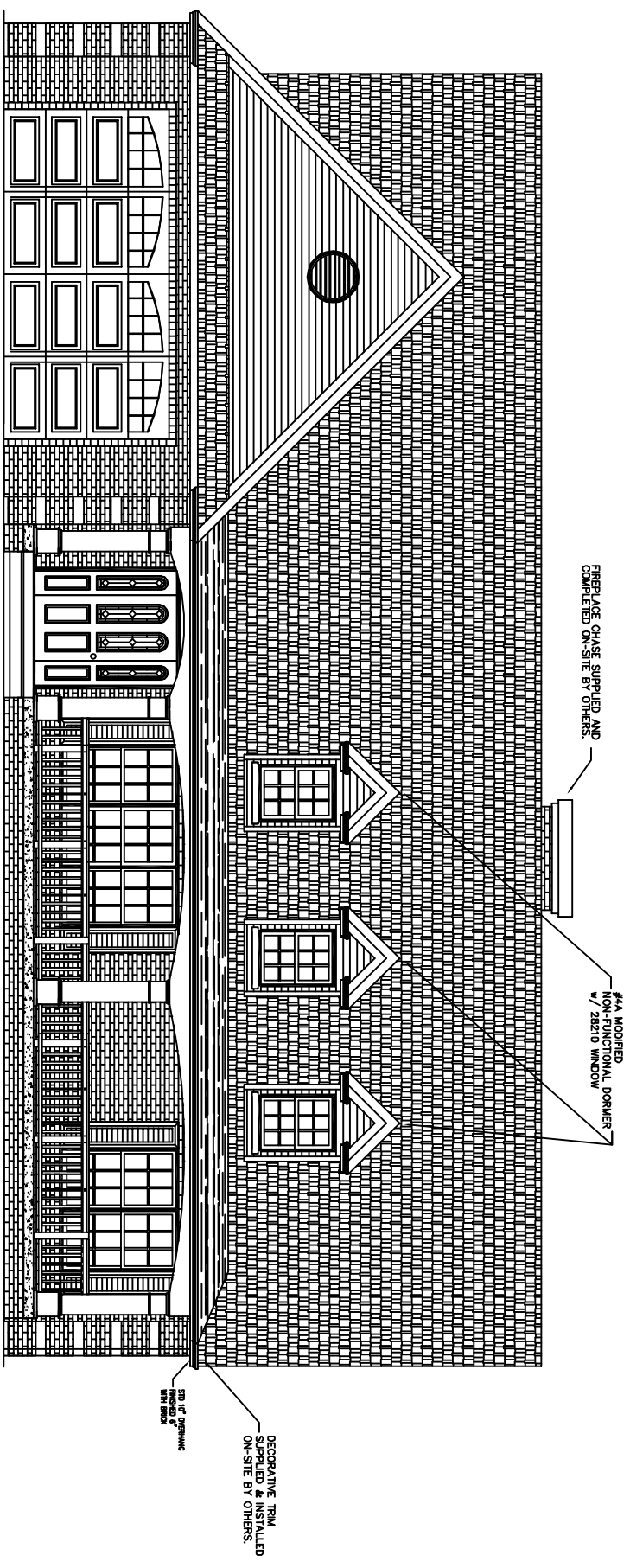
SCALE: 1/8"=1'-0"

DRAWN BY: DATE: CHECKED BY:

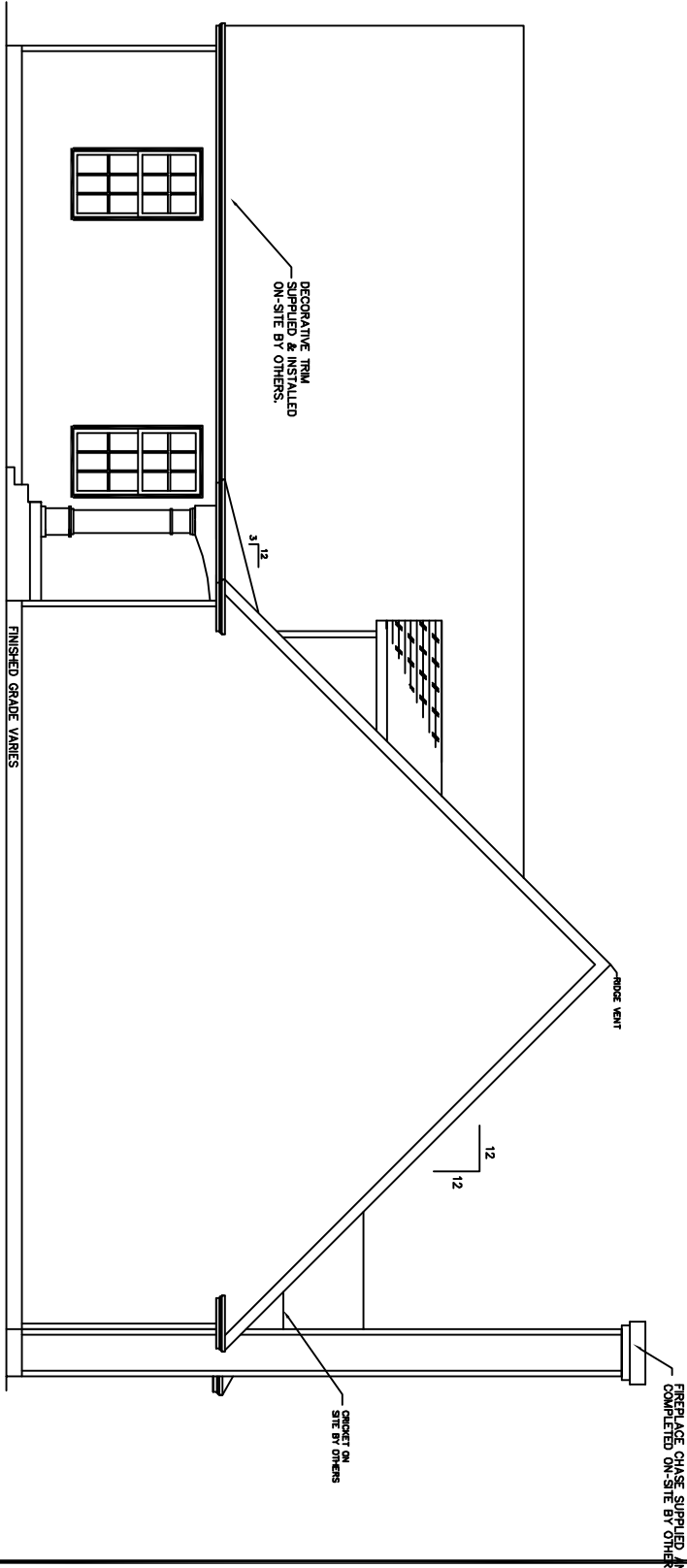
MODEL: SANDUSKY

DRAWING: 1ST FLOOR PLAN

SHEET: 2



FRONT ELEVATION

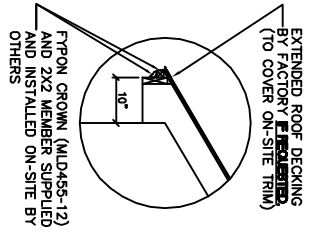


RIGHT ELEVATION

ROOF PITCHES -
 MAIN ROOF - 12/12
 GARAGE ROOF - 12/12
 PORCH ROOF - 3/12
 DORMER - 12/12

NOTES:

ALL PORCHES DEPICTED IN ELEVATIONS ON-SITE BY OTHERS
 OVERHANG LENGTHS MUST BE ADJUSTED TO ALIGN DUE TO MULTIPLE ROOF PITCHES



WEB SITE:
 EXCELHOMES.COM

COPYRIGHT © 2006
 THIS DOCUMENT AND THE SUBJECT MATTER CONTAINED HEREIN IS PROPRIETARY AND MAY NOT BE REPRODUCED WITHOUT THE WRITTEN PERMISSION OF EXCEL HOMES LLC

CUSTOMER/PROJECT:
 BUILDER:

REV#	DATE	REVISIONS	BY

DRAWN BY: DATE: SCALE: 1/8"=1'-0" CHECKED BY:

FILE:
 SQ.FT.: 1,953
 STATE:
 TYPE:
 MODEL: SANDUSKY
 DRAWING: FRONT & RIGHT ELEVATIONS
 SHEET: 4