


- NOTES:
1. 2x6, EXT WALLS @ 24" O.C./2x4 MARR WALLS
 2. 8'-0" CLG HT
 3. 2x10 SP-F#2 FLOOR JOISTS @ 16" O.C.
 4. ROOF SYSTEM TO BE 24" O.C.
 5. MW SINGLE HUNG MODULAR WINDOWS (#1=24210, #2=2842, #3=3046, #4=2852, #11=2856E)
 - 6.
 - 7.
 - 8.
 - 9.
 - 10.



WEB SITE:
EXCELHOMES.COM

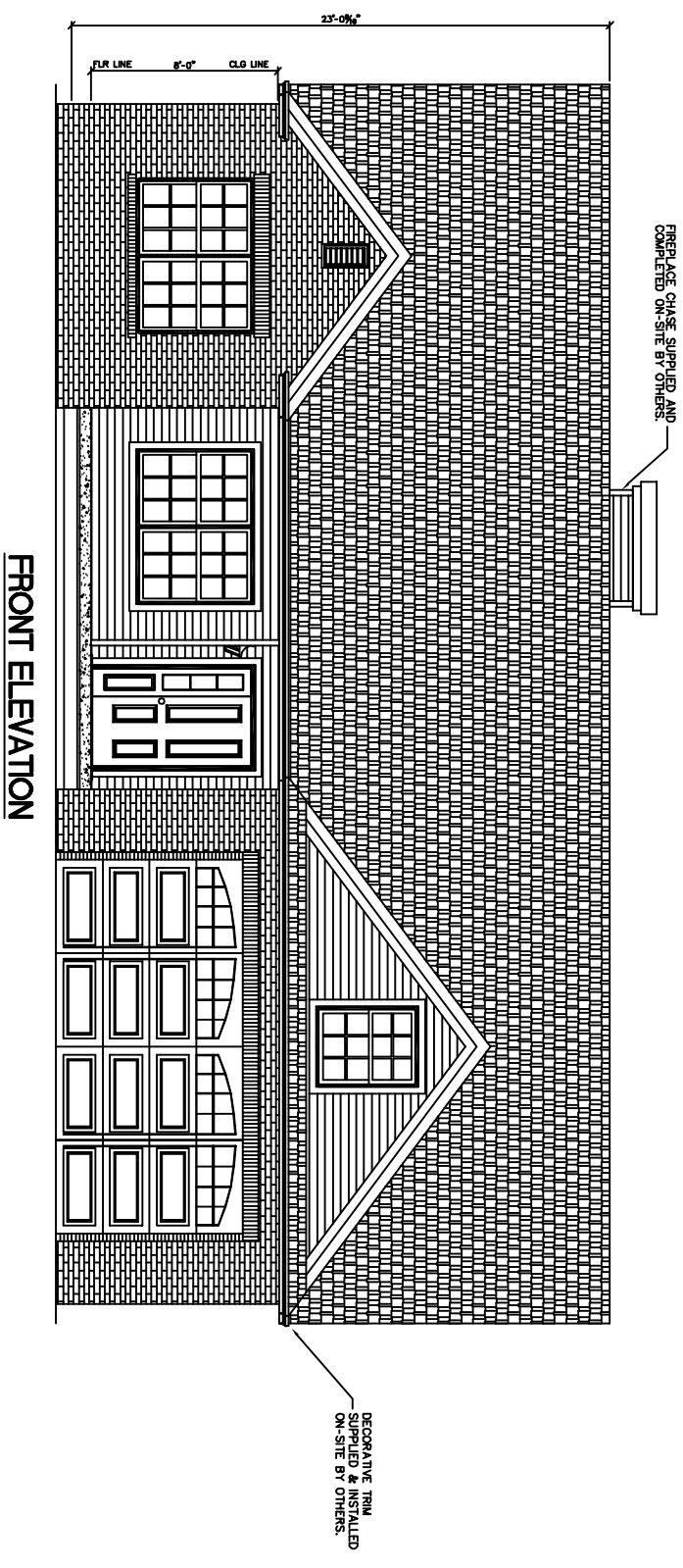
EXCEL HOMES

THIS DOCUMENT AND THE SUBJECT MATTER CONTAINED HEREIN IS PROPRIETARY AND MAY NOT BE REPRODUCED WITHOUT THE WRITTEN PERMISSION OF EXCEL HOMES LLC

COPYRIGHT © 2008

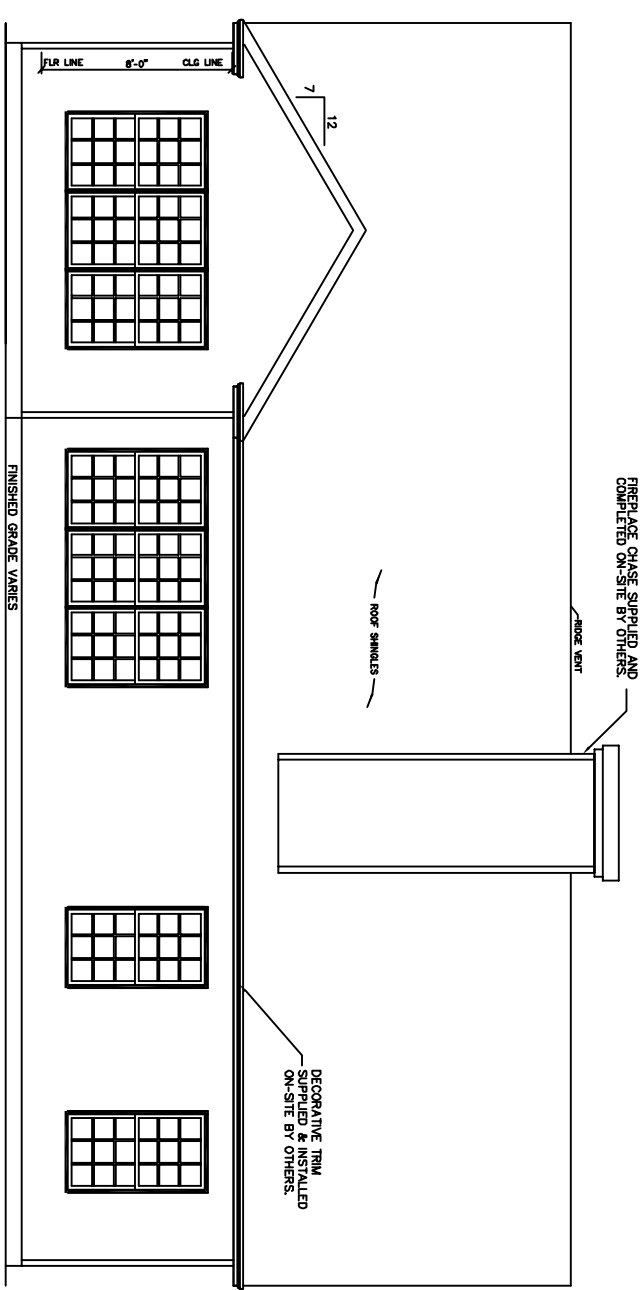
CUSTOMER/PROJECT:		BY:	
BUILDER:		CHECKED BY:	
REV#	DATE	REVISIONS	SCALE:
			1/8"=1'-0"
DRAWN BY:	DATE:		

FILE:	
SQ.FT.:	2,140
STATE:	
TYPE:	
MODEL:	PROVIDENCE
DRAWING:	1ST FLOOR PLAN
SHEET:	2

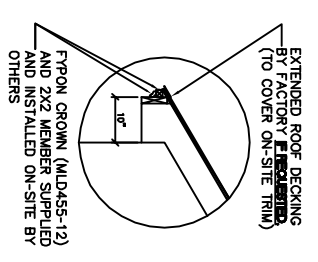


FRONT ELEVATION

ROOF PITCHES -
 MAIN ROOF - 7/12
 GARAGE ROOF - 9/12
 DORMER ROOFS - 9/12
 SHED ROOF - 3/12



REAR ELEVATION



NOTES:

ALL PORCHES DEPICTED IN ELEVATIONS ON-SITE BY OTHERS
 OVERHANG LENGTHS MUST BE ADJUSTED TO ALIGN DUE TO MULTIPLE ROOF PITCHES



WEB SITE:
 EXCELHOMES.COM

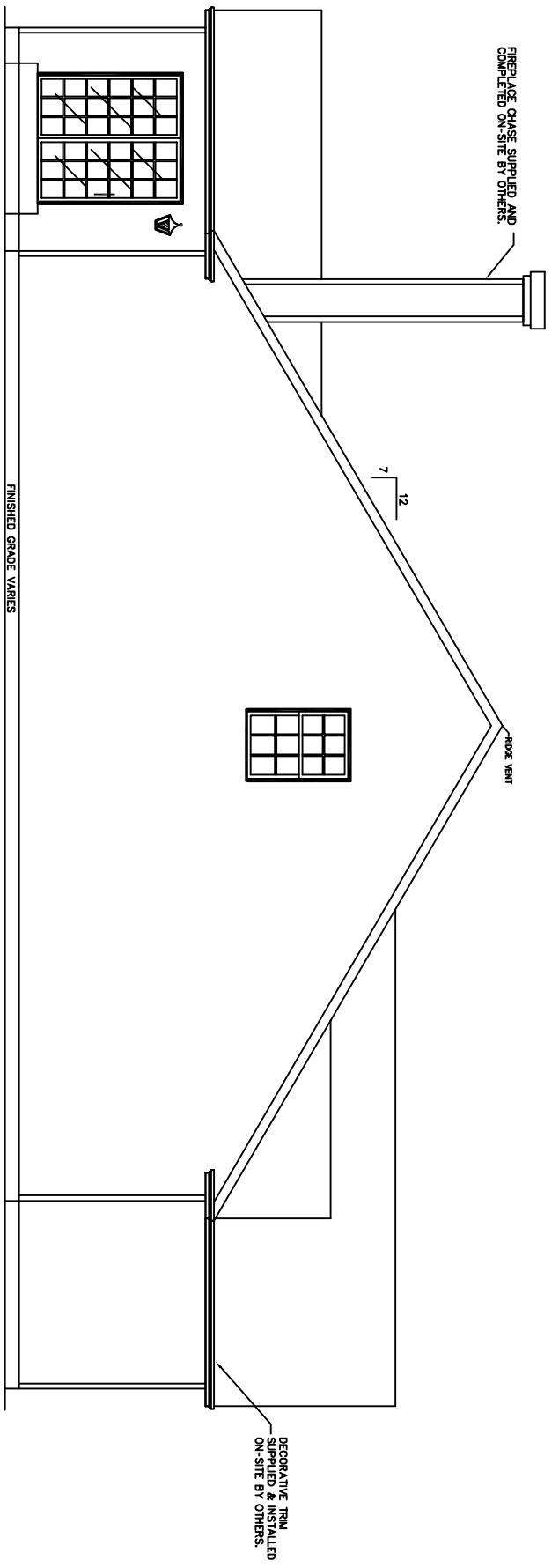
COPYRIGHT © 2008
 THIS DOCUMENT AND THE SUBJECT MATTER CONTAINED HEREIN IS PROPRIETARY AND MAY NOT BE REPRODUCED WITHOUT THE WRITTEN PERMISSION OF EXCEL HOMES LLC

CUSTOMER/PROJECT:
 BUILDER:

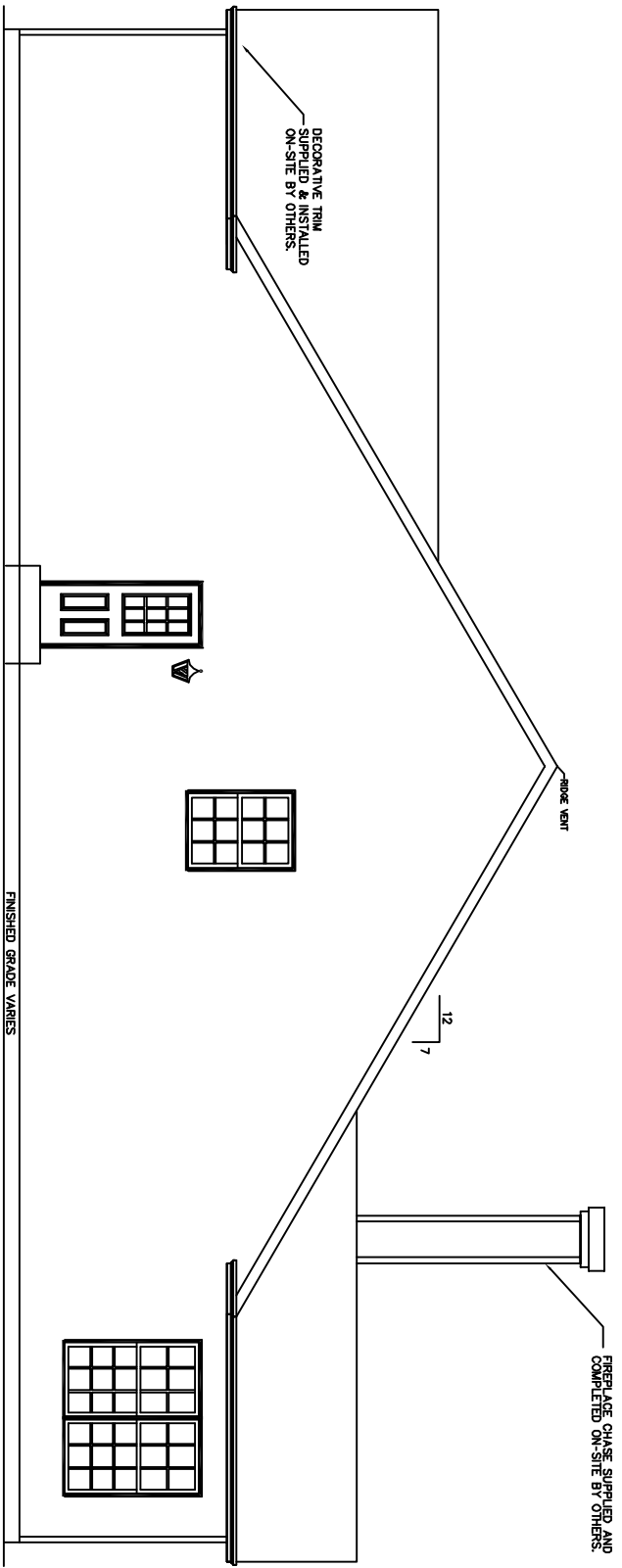
REV#	DATE	REVISIONS	BY

SCALE: 1/8"=1'-0"
 DRAWN BY: DATE: CHECKED BY:

FILE:
 SQ.FT.: 2,140
 STATE:
 TYPE:
 MODEL: PROVIDENCE
 DRAWING: FRONT & REAR ELEVATIONS
 SHEET: 4A



LEFT ELEVATION



RIGHT ELEVATION



WEB SITE:
EXCELHOMES.COM

COPYRIGHT © 2008
THIS DOCUMENT AND THE SUBJECT MATTER CONTAINED HEREIN IS PROPRIETARY AND MAY NOT BE REPRODUCED WITHOUT THE WRITTEN PERMISSION OF EXCEL HOMES LLC

CUSTOMER/PROJECT:

BUILDER:

REV#	DATE	REVISIONS	BY

DRAWN BY: DATE: SCALE: 1/8"=1'-0" CHECKED BY:

FILE:

SO. FT.: 2,140

STATE:

TYPE:

MODEL: PROVIDENCE

DRAWING: LEFT & RIGHT ELEVATIONS

SHEET: 4B