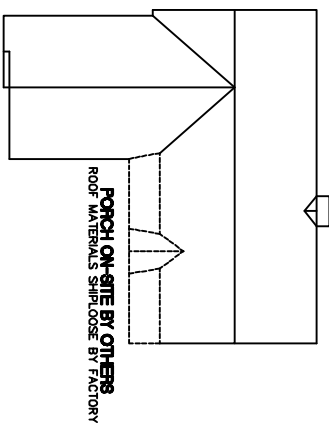


ROOF KEY PLAN



- NOTES:
1. 2x6 EXT WALLS @ 24" O.C./2x3 MARR WALLS
 2. 8'-0" CLG HT.
 3. 2x10 SPF #2 FLOOR JOISTS @ 16" O.C.
 4. ROOF SYSTEM TO BE 24" O.C.
 5. MW SINGLE HUNG MODULAR WINDOWS (#1=24210, #2=2842, #3=3046, #4=2852, #11=2856E)
 6. ??? MPH WIND ZONE/FALL DOORS & WINDOWS MINIMUM DP ??? IN EXPOSURE ???
 - 7.
 - 8.
 - 9.
 - 10.



WEB SITE:
EXCELHOMES.COM

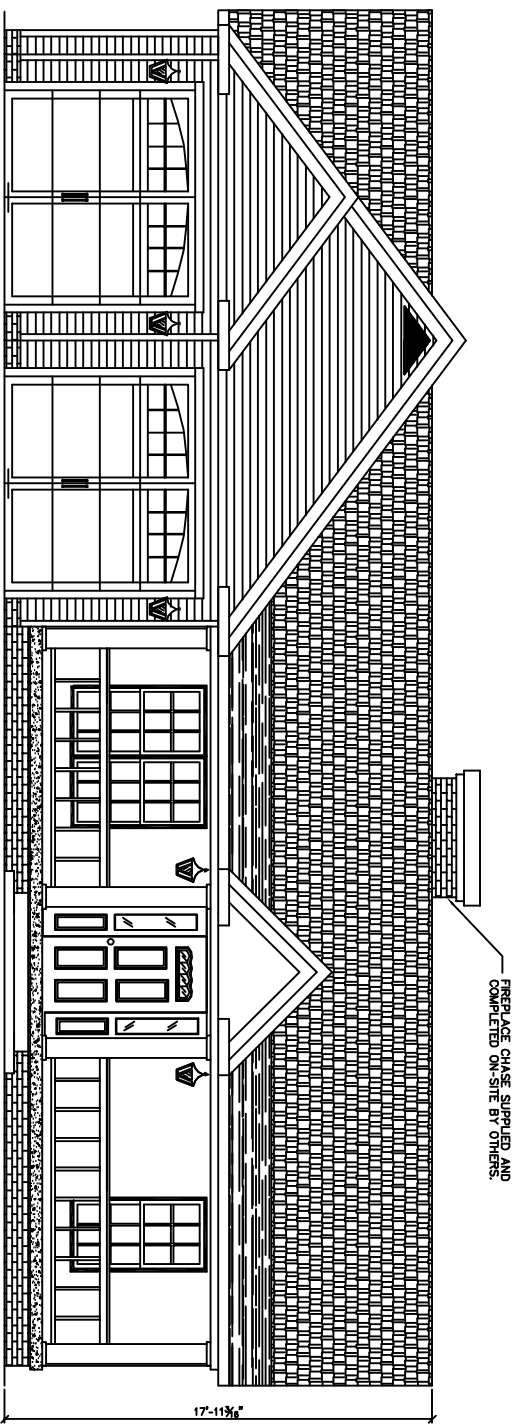
COPYRIGHT © 2006
THIS DOCUMENT AND THE SUBJECT MATTER CONTAINED HEREIN IS PROPRIETARY AND MAY NOT BE REPRODUCED WITHOUT THE WRITTEN PERMISSION OF EXCEL HOMES LLC

CUSTOMER/PROJECT:
BUILDER:

REV#	DATE	REVISIONS	BY

DRAWN BY: DATE: SCALE: 1/8"=1'-0" CHECKED BY:

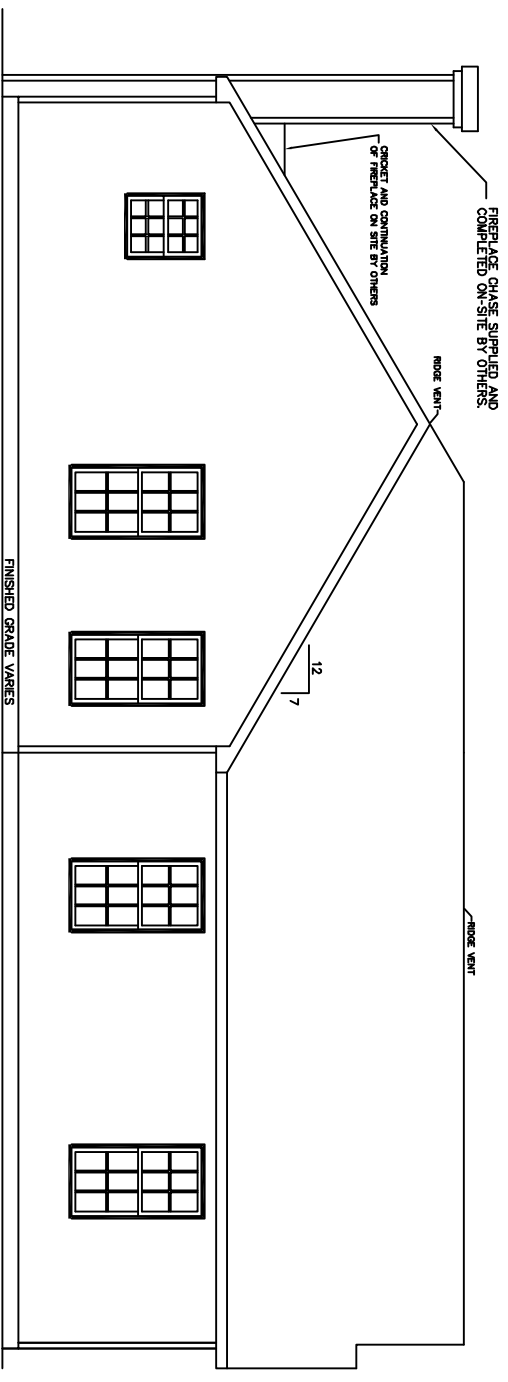
FILE: SO.FLT: 1,540
STATE: TYPE: MODEL: LINDEN
DRAWING: 1ST FLOOR PLAN
SHEET: 2



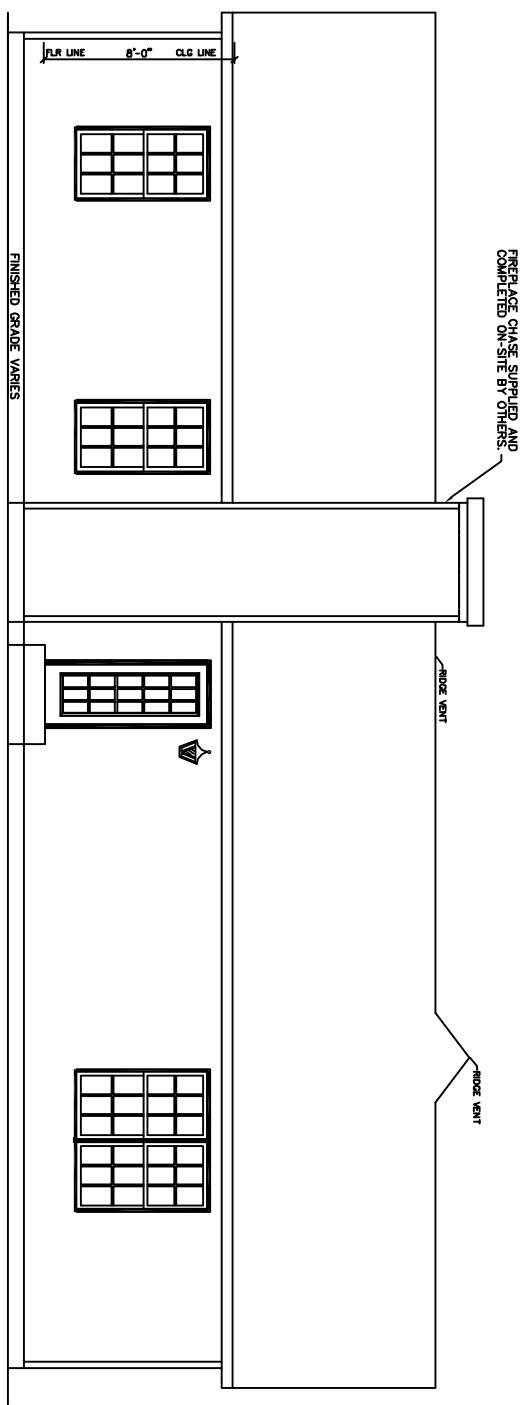
ROOF PITCHES -
 MAIN ROOF - 7/12
 GARAGE ROOF - 9/12
 PORCH - 12/12
 SHED PORCH ROOF - 3/12

FRONT ELEVATION

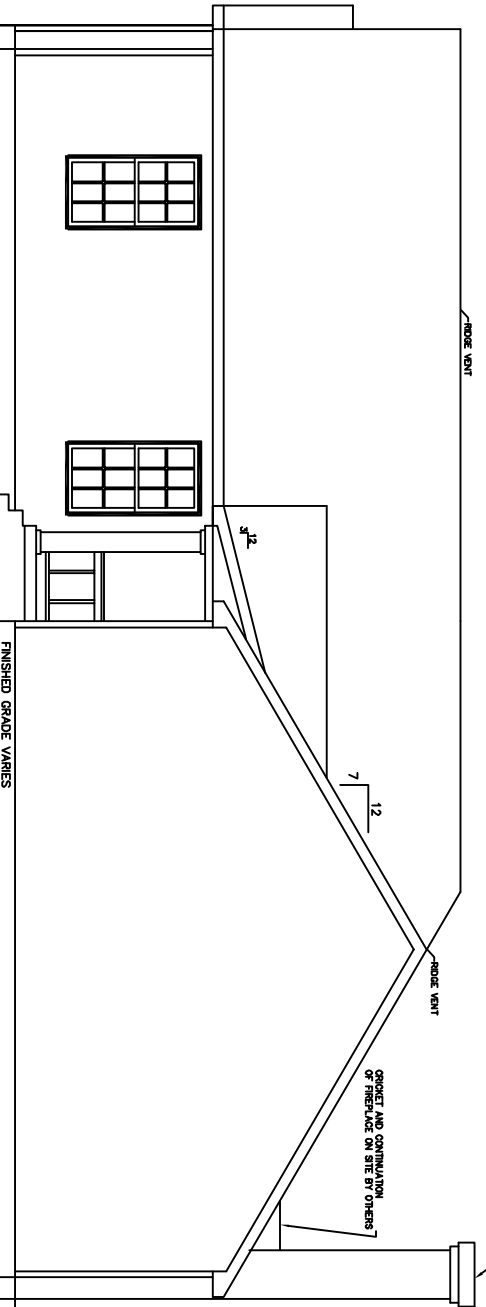
REAR ELEVATION



LEFT ELEVATION



RIGHT ELEVATION



NOTES
 ALL PORCHES DEPICTED IN ELEVATIONS ON-SITE BY OTHERS
 OVERHANG LENGTHS MUST BE ADJUSTED TO ALIGN DUE TO MULTIPLE ROOF PITCHES



WEB SITE:
 EXCELHOMES.COM

COPYRIGHT © 2006
 THIS DOCUMENT AND THE SUBJECT MATTER CONTAINED HEREIN IS PROPRIETARY AND MAY NOT BE REPRODUCED WITHOUT THE WRITTEN PERMISSION OF EXCEL HOMES LLC

CUSTOMER/PROJECT:
 BUILDER:

REV#	DATE	REVISIONS	BY

SCALE: 1/8"=1'-0"

DRAWN BY: DATE: CHECKED BY:

FILE: 1,540
 STATE: LINDEN
 MODEL: LINDEN
 DRAWING: ELEVATIONS
 SHEET: 4