

- NOTES:
1. 2x6 EXT WALLS @ 24" O.C./2x3 MARR WALLS
  2. 8'-0" CLG HT.
  3. 2x10 SPF#2 FLOOR JOISTS @ 16" O.C.
  4. ROOF SYSTEM TO BE 24" O.C.
  5. MW SINGLE HUNG MODULAR WINDOWS (#1=24x10, #2=28x42, #3=30x46, #4=28x52, #11=28x66E)
  6. ??? MPH WIND ZONE/ALL DOORS & WINDOWS MINIMUM DP ??? IN EXPOSURE ???
  - 7.
  - 8.
  - 9.
  - 10.

**excel HOMES**

WEB SITE:  
EXCELHOMES.COM

**EXCELHOMES.COM**

WEB SITE:  
EXCELHOMES.COM

**EXCELHOMES.COM**

WEB SITE:  
EXCELHOMES.COM

**EXCELHOMES.COM**

WEB SITE:  
EXCELHOMES.COM

**EXCELHOMES.COM**

WEB SITE:  
EXCELHOMES.COM

FILE: 1,529

SO. FT.: 1,529

STATE: BOSTWICK

TYPE: 1ST FLOOR PLAN

SHEET: 2

REV#	DATE	REVISIONS	BY

CUSTOMER/PROJECT:

BUILDER:

SCALE: 1/8"=1'-0"

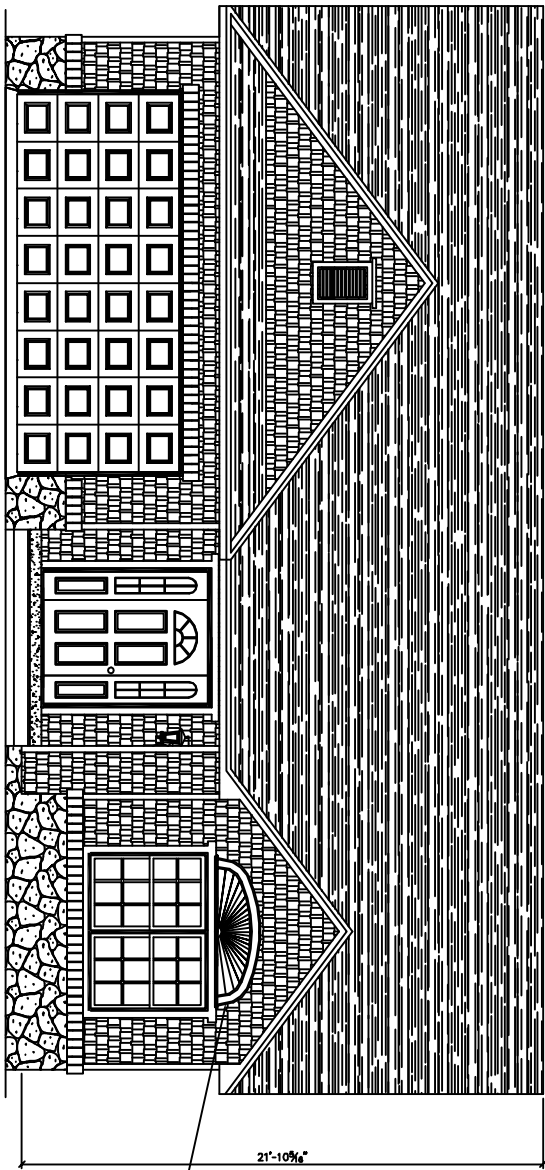
CHECKED BY:

DRAWN BY:

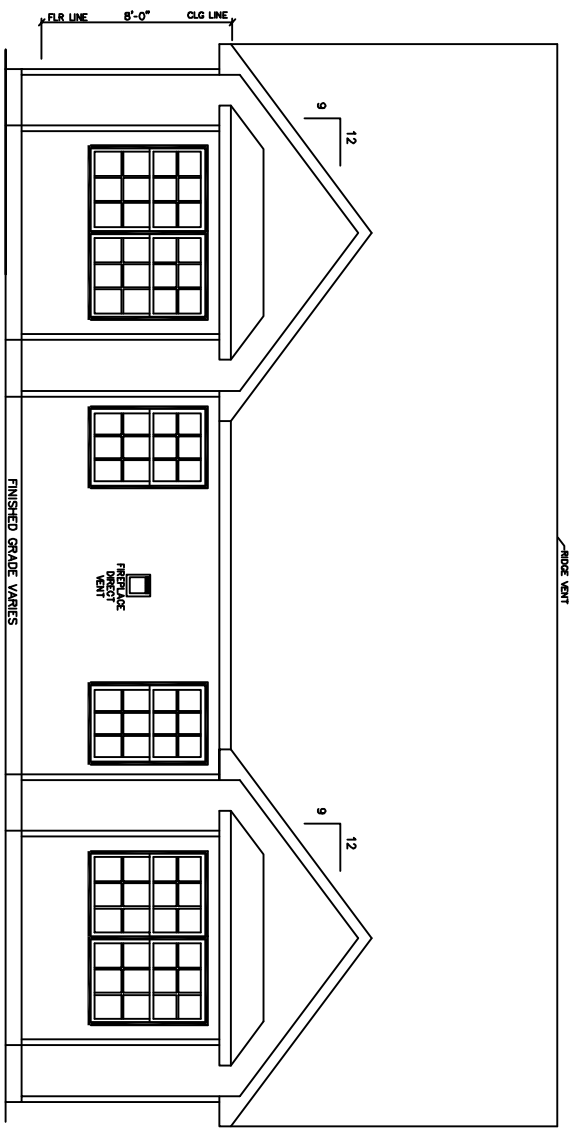
DATE:

**ROOF PITCHES -**

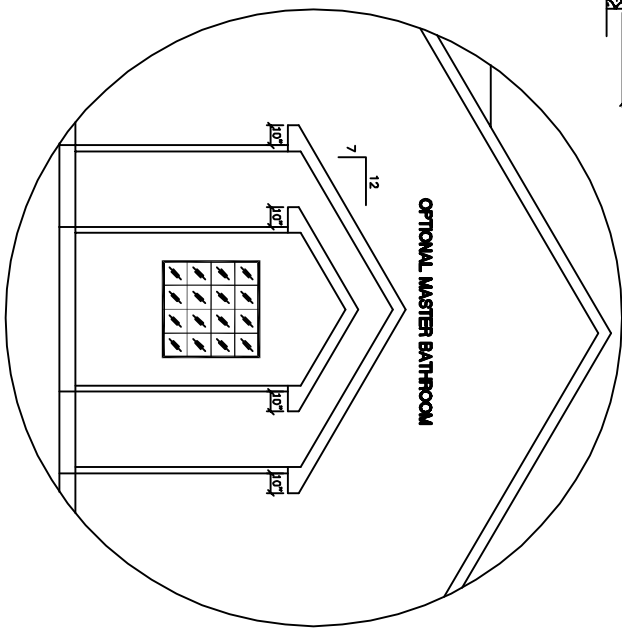
MAIN ROOF - 7/12  
 GARAGE - 9/12  
 BUMP-OUT - 9/12



**FRONT ELEVATION**

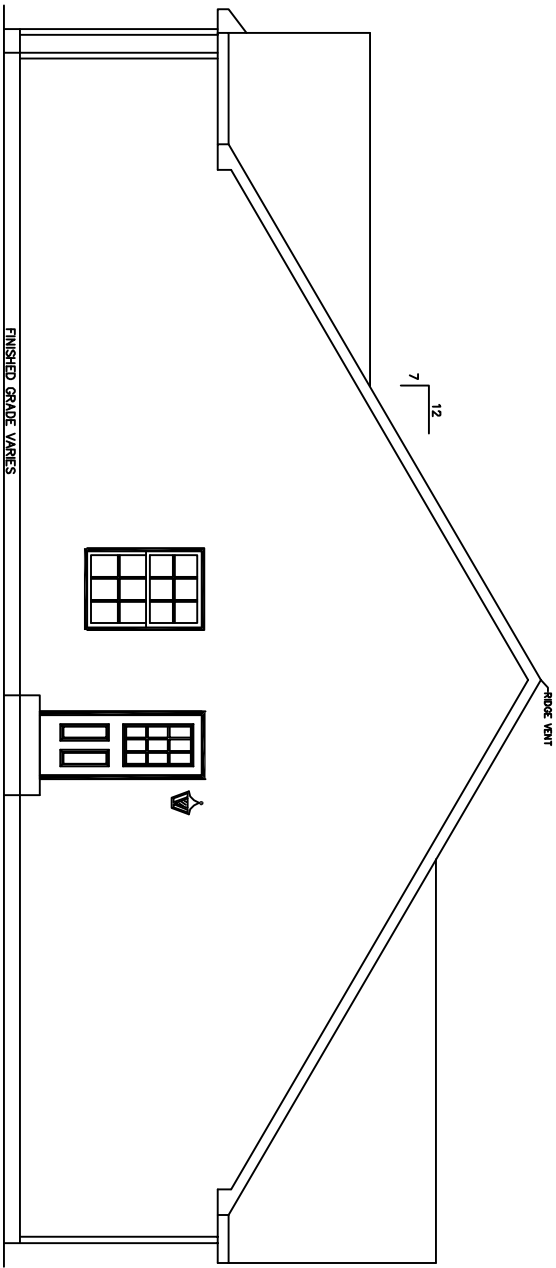


**REAR ELEVATION**

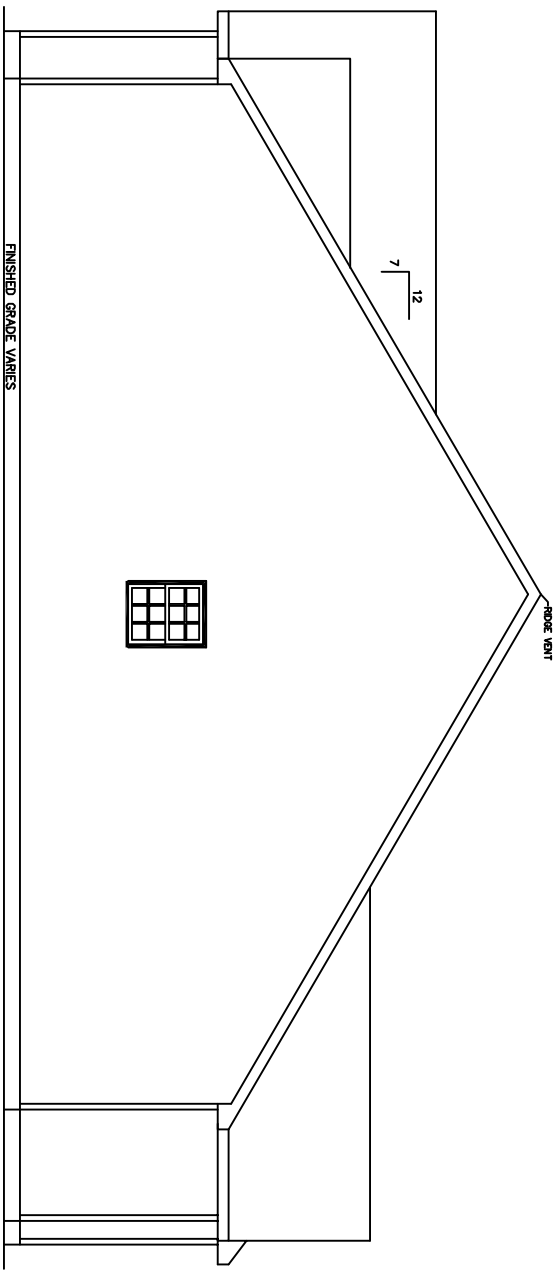


**OPTIONAL MASTER BATHROOM**

**OPTIONAL RIGHT ELEVATION**



**LEFT ELEVATION**



**RIGHT ELEVATION**

**NOTES:**

ALL PORCHES DEPICTED IN ELEVATIONS ON-SITE BY OTHERS  
 OVERHANG LENGTHS MUST BE ADJUSTED TO ALIGN DUE TO MULTIPLE ROOF PITCHES



WEB SITE:  
 EXCELHOMES.COM

COPYRIGHT © 2006

THIS DOCUMENT AND THE SUBJECT MATTER CONTAINED HEREIN IS PROPRIETARY AND MAY NOT BE REPRODUCED WITHOUT THE WRITTEN PERMISSION OF EXCEL HOMES LLC

CUSTOMER/PROJECT:  
 \_\_\_\_\_

BUILDER:  
 \_\_\_\_\_

REV#	DATE	REVISIONS	BY

SCALE: 1/8"=1'-0"

DRAWN BY: \_\_\_\_\_ DATE: \_\_\_\_\_ CHECKED BY: \_\_\_\_\_

FILE: \_\_\_\_\_

SO.FT.: 1,529

STATE: \_\_\_\_\_

TYPE: \_\_\_\_\_

MODEL: BOSTWICK

DRAWING: ELEVATIONS

SHEET: 4