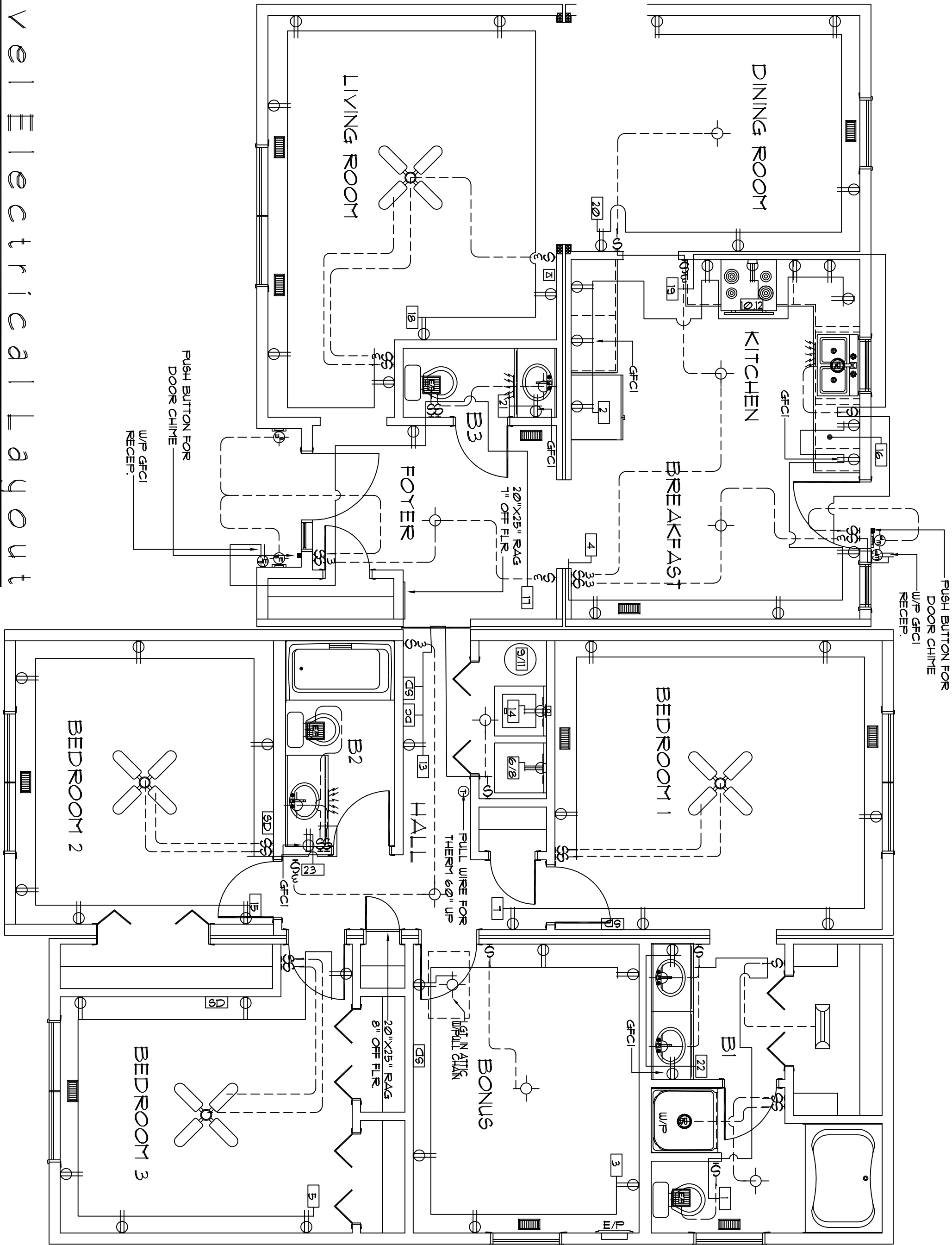


FOR APPRAISAL PURPOSES ONLY



First Level Electrical Layout

SCALE: 1/4"=1'-0"

NOTES:  
PREP FOR PADDLE FAN IN BEDROOMS AND LIVING ROOM

A) Purchaser responsible for all service entry connections to dwelling unit main service panel. B) Purchaser responsible for performing complete circuit testing prior to service connection for all site wiring. C) Exterior weatherproof recepts and light fixtures shipped for site installation by purchaser. D) All gas pipe lines for gas appliances by purchaser. E) All heating / cooling systems supplied and installed by purchaser per state and local codes. F) Water washer/dryer are located in basement, all inst./com. shall be by Purch. to meet current Bldg/Elec. codes.	G) All wiring to be per National Electric Code (Current Edition). H) Unless other ulse specified, mount recept. 14" from subfloor to bottom of boxes, switches 50", thermostat 60" I) AC/DC smoke detectors wired for simultaneous operation. J) GFCI, recepts wired with feed thru for ground fault protection to all (Load side) branch circuit recept. K) Range hoods are ventless unless otherwise specified. L) All exhaust fans in baths and at dryer shall be vented to the outside air by the purchaser unless otherwise specified. M) Lock-Out clip on water heater.	N) Switches & Recept. in bedrooms and dressing rooms over lavinets to be 42" up. O) Switches and recepts over counter to be 44" up unless otherwise specified. P) All electrical boxes on exterior walls to be sealed with foam to eliminate air infiltration. Q) Batt insulation glued to attic access cover. R) Insulation shipped for site installation by Purch. to be installed in gaps at mating wall seams, and at floor & ceiling areas.	S) Ceiling angles to be caulked behind crown mould (if crown mould is purchased). T) All exterior wall horizontal sheathing joints to be sealed. U) Interior walls around the perimeter of basement openings to be insulated with R-13. V) Wiring for phone and TV outlets are the respons- ibility of the purchaser. NCH to provide the outlet jack and 2x4 box with 3/4" conduit below subfloor. W) Tamper Resistant Receptacles	<div><div><div><div><div><div></div><div>Duplex Receptacle</div></div><div><div></div><div>Weatherproof duplex</div></div><div><div></div><div>240V Receptacle</div></div><div><div></div><div>Overhead light</div></div><div><div></div><div>Recessed Light</div></div><div><div></div><div>Weatherproof light</div></div><div><div></div><div>Fluorescent light</div></div><div><div></div><div>Cig. Exh. fan (50 CFM Min)</div></div><div><div></div><div>Push button for chime</div></div></div><div><div><div></div><div>Single pole switch</div></div><div><div></div><div>Three-way switch</div></div><div><div></div><div>Four-way switch</div></div><div><div></div><div>Television outlet</div></div><div><div></div><div>Telephone outlet</div></div><div><div></div><div>Home Office Box</div></div><div><div></div><div>Thermostat</div></div><div><div></div><div>Electric door chime</div></div><div><div></div><div>Smoke Detector</div></div></div></div></div></div>	<div><div><div><div><div><div></div><div>Carbon Monoxide Det.</div></div><div><div></div><div>Paddle Fan</div></div><div><div></div><div>Exterior Light</div></div><div><div></div><div>Heat/Fan/Light</div></div><div><div></div><div>Flood Light</div></div><div><div></div><div>Eyeball Light</div></div><div><div></div><div>4 x 10 Registers</div></div></div><div></div></div></div></div>

NOTE: ONLY ONE HOUSE  
MAY BE BUILT UTILIZING  
THE PLANS THAT ARE  
DESIGNATED FOR THIS  
CONTRACT JOB



©  
COPYRIGHT 2020 NATIONWIDE CUSTOM HOMES  
ALL RIGHTS RESERVED

**NATIONWIDE**  
*Custom Homes*  
P.O. BOX 5511 MARTINSVILLE, VA, 24115  
1100 RIVERS ROAD, MARTINSVILLE, VA, 24115  
(716) 632-1100  
FAX (716) 632-1181  
WWW.NATIONWIDECUSTOMHOMES.COM

PLAN NAME: DOWNINGTOWN				PURCHASER:		PAGE NO.
COLLECTION/SERIES: LEGACY				JOB NO.:	CONTRACT NO.:	
DESIGN DATE:		DWG. BY:	CHK. BY:	PROCESS DATE:	DWG. BY:	
REV. DATE:		REV. BY:		CHANGE ORDER DATE:		
REV. DATE:		REV. BY:		PRODUCTION DATE:	DWG. BY:	



