

PLAN OPTION LEGEND:

- NOTE: OPTIONS SHOWN ON PLAN AS DESCRIBED BELOW ARE NOT INCLUDED IN THE BASE PRICE
- OPTION #1 = OPTIONAL WASHER AND ELECTRIC DRYER HOOK-UP. SHELF INCLUDED WITH OR WITHOUT WASHER/DRYER HOOK-UP.
 - OPTION #2 = OPTIONAL PANELIZED GARAGE. WALLS TO BE BUILT AS PANELS, ROOF TRUSSES AND MATERIALS SHIPPED LOOSE. SADDLE MATERIALS SHIPPED LOOSE WHEN GARAGE ROOF JOINS MODULAR.
 - OPTION #3 = OPTIONAL PORCH ROOF MATERIALS SHIPPED LOOSE. PORCH FLOOR, COLUMNS AND RAILING BY OTHERS.
 - OPTION #4 = OPTIONAL GDC60F FIREPLACE, MANTEL, HEARTH, AND EXTERIOR CHASE.
 - OPTION #5 = OPTIONAL 5-LITE SIDELIGHTS - CS308W PER SIDE. STANDARD DOES NOT INCLUDE SIDELITES.
 - OPTION #6 = OPTIONAL CS108W 15-LITE DOOR. CS210 6-PANEL DOOR IS STANDARD.
 - OPTION #7 = OPTIONAL 'DELPHINIUS' WHIRLPOOL # 1260641LX SHOWN. 'DELPHINIUS' SOAKING TUB # 26040LX STANDARD.
 - OPTION #8 = OPTIONAL MODULARIZED WALK-OUT BAY. WHEN BAY ROOF TERMINATES AT VERTICAL WALL (TWO-STORY) THE ROOF IS BUILT & SHIPPED ON THE BAY BY THE MANUFACTURER. WHEN THE ROOF ADJOINS AN ADJACENT ROOF (1-STORY), ROOF CONSTRUCTION MATERIALS ARE SHIPPED LOOSE. IF THE BAY OPTION IS NOT CHOSEN, THE CRIG WINDOWS ARE ELIMINATED AND THE DOOR SHOWN IS MOVED TO THE MODULAR WALL.
 - OPTION #9 = OPTIONAL WINDOW OVER GARAGE DOOR.

STRUCTURAL NOTES:

- A) (2) 1 1/2" x 11 1/4" LAM. CEILING GIRDERS PER MODULE.
- B) (3) 1 1/2" x 20" LAM. CEILING GIRDER TO BE MOUNTED FLUSH TOP OF BEAM WITH TOP OF 2x12 CEILING JOIST PERIMETER.
- C) (2) 1 1/2" x 11 1/4" LAM. CEILING GIRDER & (2) 2x10 SYP#2 ABOVE.
- D) STANDARD (3) 2x10 SPF#2 HEADER. DOUBLE 2x4 SPF#2 SUPPORT COLUMNS BETWEEN WINDOWS USED TO DECREASE SPAN.
- E) (3) 1 1/2" x 9 1/4" LAM BEAM HEADER.

STUD COLUMN LEGEND:

- (15) = (2) 2x4 STUD GRADE COLUMNS EACH MODULE
- (16) = (2) 2x6 STUD GRADE COLUMNS EACH MODULE
- (18) = (3) 2x4 STUD GRADE COLUMNS EACH MODULE
- (19) = (3) 2x6 STUD GRADE COLUMNS EACH MODULE

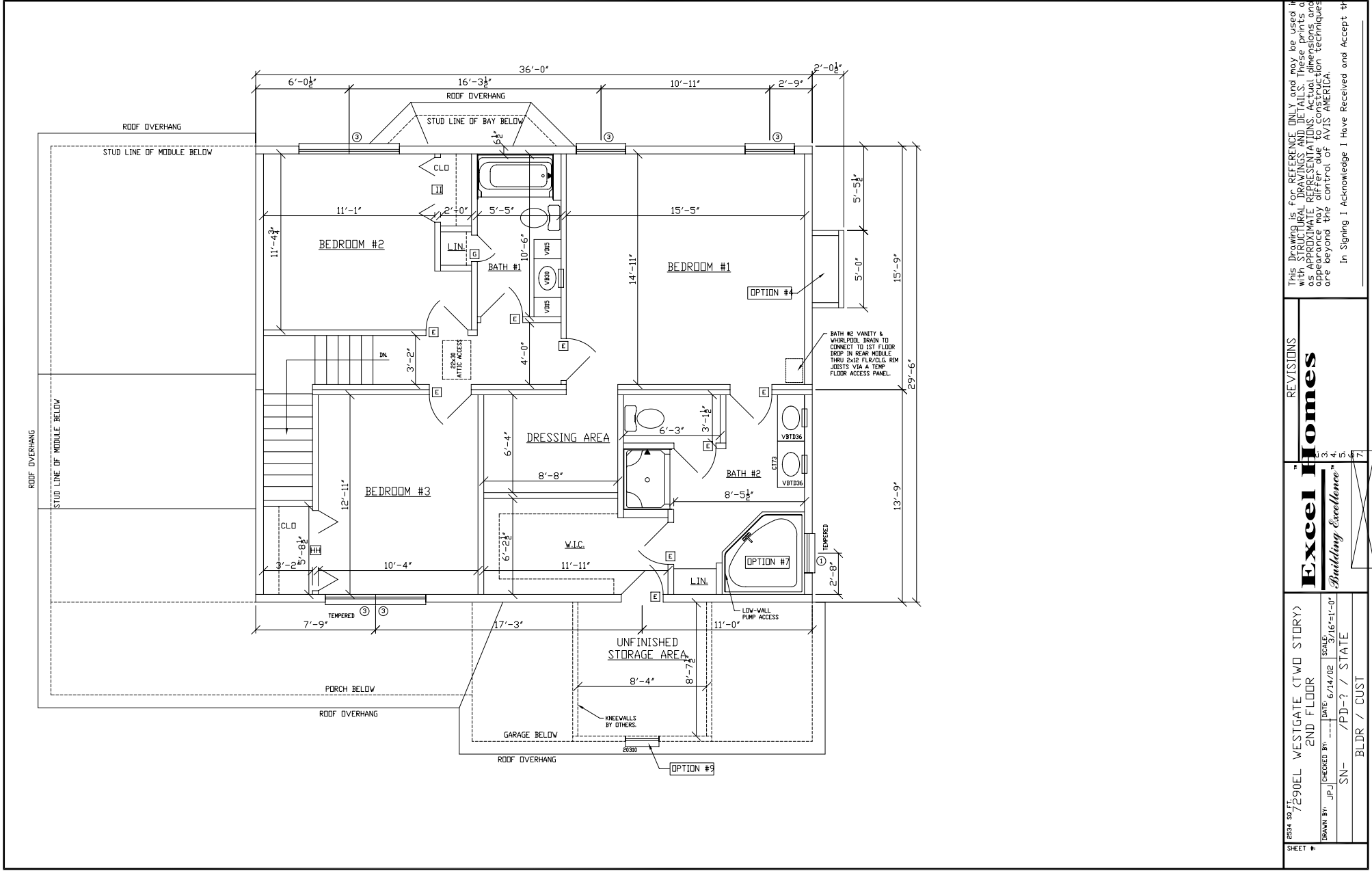
Drawing is for REFERENCE ONLY and may be used in conjunction with other drawings. These prints are not to be drawn or used for construction purposes without the approval of the architect. Any appearance may differ due to construction techniques and conflicts that are beyond the control of AVIS AMERICA. In Signing I Acknowledge I have Received and Accept this print

Excel Homes
Building Excellence

2534 30th ST
 WESTGATE (TWO STORY)
 1ST FLOOR
 DATE: 6/14/02
 CHECKED BY: J.P.
 DRAWN BY: J.P.
 SN- /PD-? / STATE
 BLDR / CUST

REVISIONS
 1
 2
 3
 4
 5
 6
 7

SHEET #



This Drawing is for REFERENCE ONLY and may be used in conjunction with other ARCHITECTURAL DRAWINGS AND DETAILS. These prints are drawn to scale and their appearance may differ due to construction techniques and conflicts that are beyond the control of AVIS AMERICA.

In Signing I Acknowledge I Have Received and Accept this print

REVISIONS

Excel Homes

Building Excellence

2534 302-7290EL WESTGATE (TWO STORY)
 2ND FLOOR
 SCALE 3/2"=1'-0"
 DRAWN BY: JPL CHECKED BY: DATE: 6/14/02
 SN- /PD-? / STATE
 BLDG / CUST