

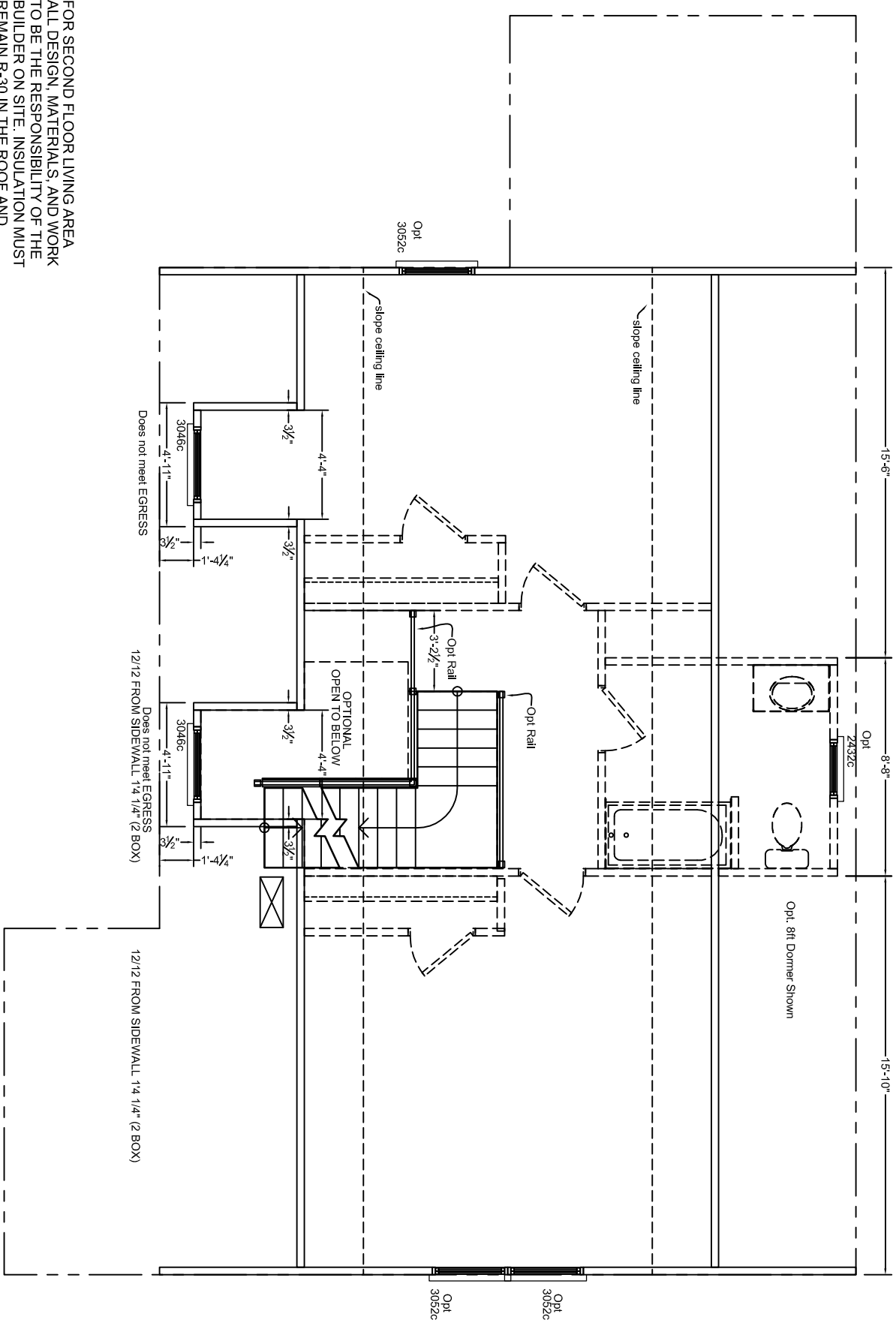
Total SQ FT	
Story	Base Area
1st story	1328.958
2nd story Unfinished	671.974
2000.932	

NOTES:
 1. IT IS THE BUILDERS RESPONSIBILITY TO CONFIRM WITH THE SALES REPRESENTATIVE THAT ALL INFORMATION SHOWN ON THE PLANS HAS BEEN INCLUDED ON THE SALES ORDER.
 THE SALES ORDER IS THE FINAL CONTRACT.
 2. PHONE, TV, RECESSED LIGHTS AND ANY OTHER SPECIFIC ITEM ON THE SALES ORDER MUST BE LOCATED ON A SIGNED FLOORPLAN. ITEMS NOT LOCATED IN THIS MANNER WILL BE PLACED UNDER THE DISCRETION OF ENGINEERING.
 3. MATERIALS TO FINISH THE MARRIAGE WALL WILL BE SHIPPED LOOSE INSIDE THE UNIT(S). THE INSTALLATION WILL BE THE RESPONSIBILITY OF THE BUILDER. THESE ITEMS INCLUDE, BUT ARE NOT LIMITED TO DOORS, JAMBS, CASINGS, TRIM, SHEETROCK.

REVISIONS		BY	MODEL:	BLDR	FILENAME:	SERIAL NUMBER:	PAGE:
DATE	REVISION		Chesterfield	BLDR	Chesterfield-07	101 Eastern Minerals Road, Henderson, N.C. 27537 Phone: 252-436-0001 Fax: 252-430-6662	Floorplan 1
			DRAWN BY: DRWN	DATE: 2010	SCALE:		Sheet 1

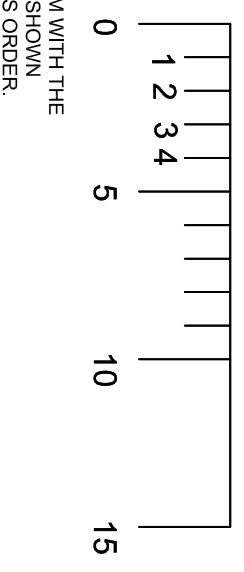
3RD PARTY SEAL

03.1



FOR SECOND FLOOR LIVING AREA
 ALL DESIGN, MATERIALS, AND WORK
 TO BE THE RESPONSIBILITY OF THE
 BUILDER ON SITE. INSULATION MUST
 REMAIN R-30 IN THE ROOF AND
 R-13 IN THE WALLS. LIGHT, VENT &
 EGRESS IS THE RESPONSIBILITY
 OF THE BUILDER ON SITE.

SUGGESTED LAYOUT FOR UNFINISHED 2nd FLOOR



Total SQ FT	
Story	Base Area
1st story	1328.958
2nd story Unfinished	671.974
	2000.932

3RD PARTY SEAL

- NOTES:
1. IT IS THE BUILDERS RESPONSIBILITY TO CONFIRM WITH THE SALES REPRESENTATIVE THAT ALL INFORMATION SHOWN ON THE PLANS HAS BEEN INCLUDED ON THE SALES ORDER. "THE SALES ORDER IS THE FINAL CONTRACT."
 2. PHONE, TV, RECESSED LIGHTS AND ANYOTHER SPECIFIC ITEM ON THE SALES ORDER MUST BE LOCATED ON A SIGNED FLOORPLAN. ITEMS NOT LOCATED IN THIS MANNER WILL BE PLACED UNDER THE DISCRETION OF ENGINEERING.
 3. MATERIALS TO FINISH THE MARRIAGE WALL WILL BE SHIPPED LOOSE INSIDE THE UNIT(S). THE INSTALLATION WILL BE THE RESPONSIBILITY OF THE BUILDER. THESE ITEMS INCLUDE, BUT ARE NOT LIMITED TO DOORS, JAMBS, CASINGS, TRIM, SHEETROCK.

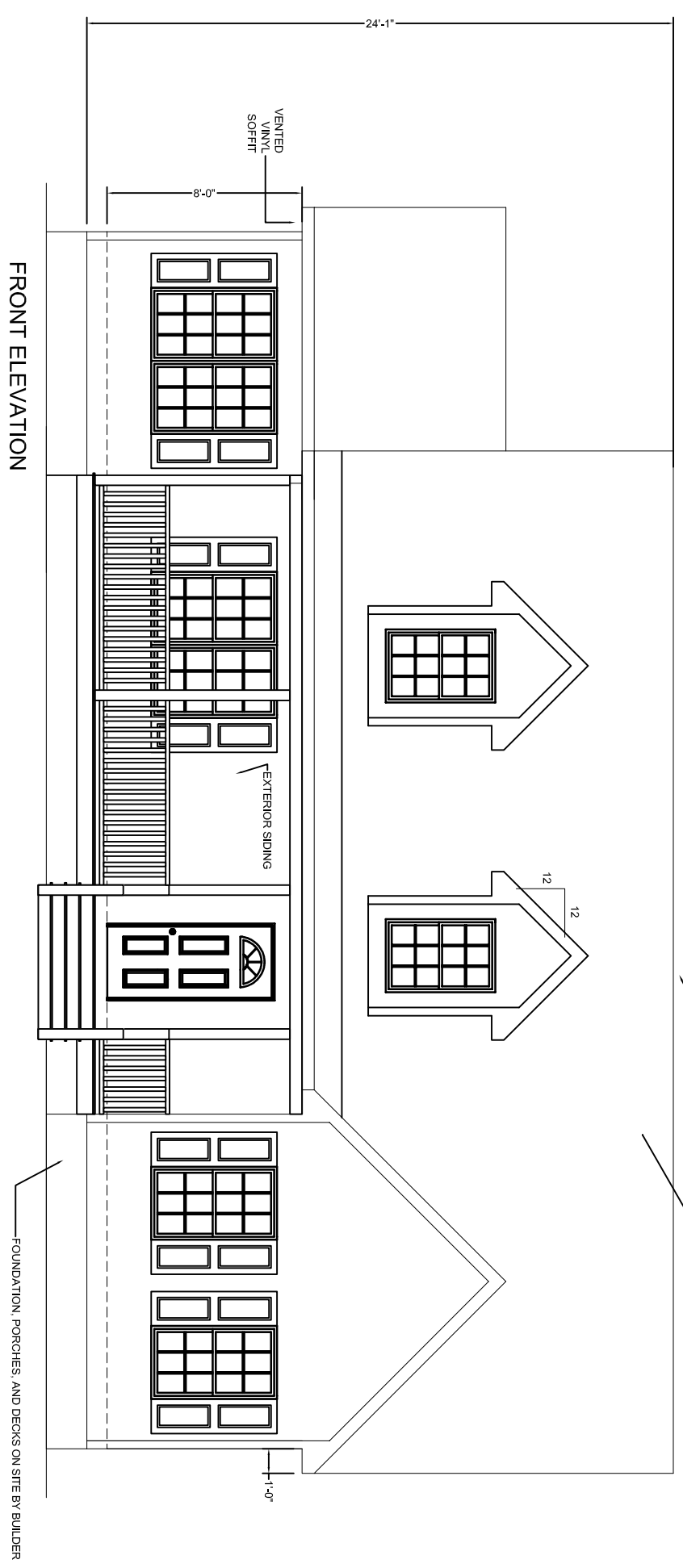
REVISIONS		BY	MODEL:	BUILDER:	FILENAME:	101 Eastern Minerals Road, Henderson, N.C. 27537
DATE	REVISION		Chesterfield	BLDR	Chesterfield-07	Phone: 252-436-0001 Fax: 252-430-6662
			DRWN	2010	SCALE:	SERIAL NUMBER:
						PAGE:
						Floorplan 2
						Sheet 2

HandCrafted Homes
SN
03.2

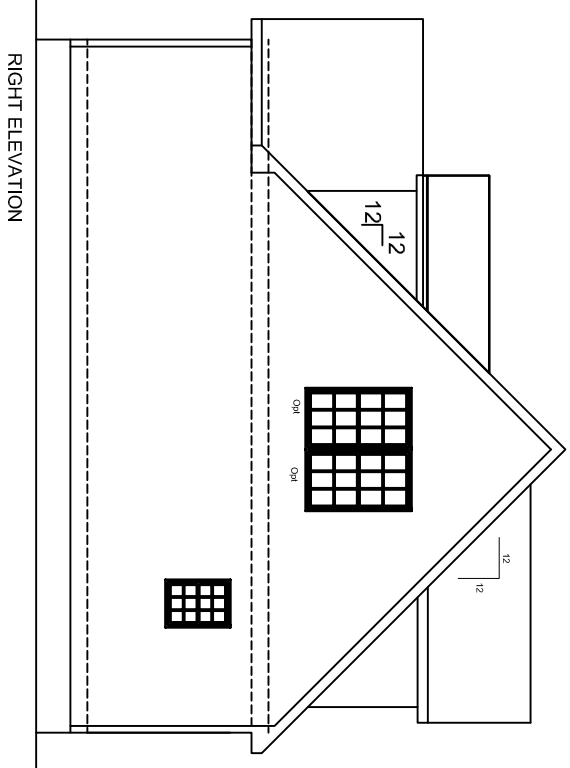
RIDGE VENT PROVIDED BY HCH AND INSTALLED AT SET

FIBERGLASS SHINGLE

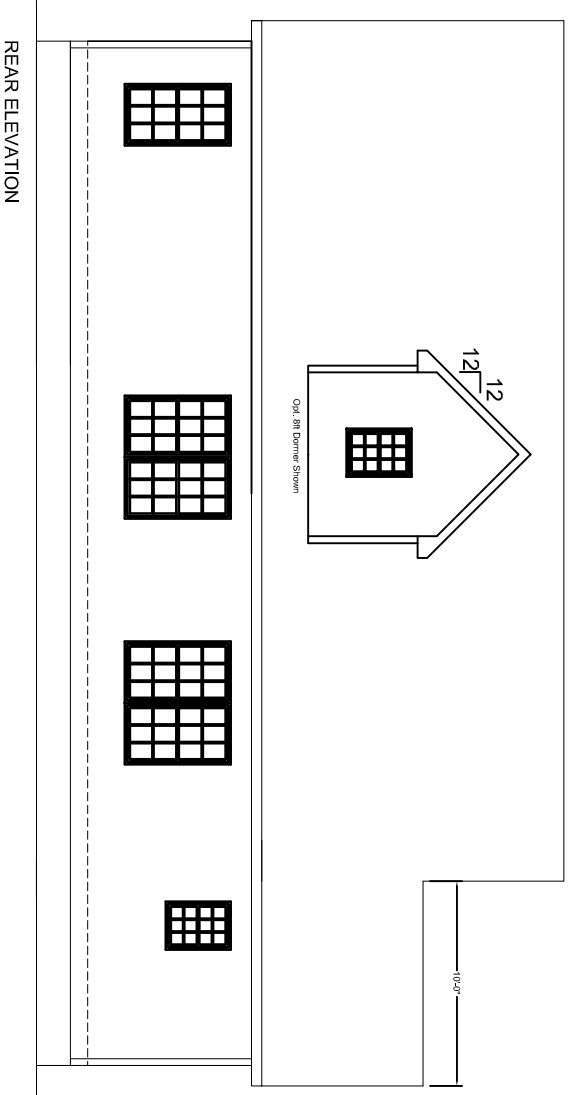
VENTILATION AT EAVE	4.097	VENTILATION AT RIDGE	4.514
ATTIC AREA		ATTIC VENTILATION REQUIRED	
1328.958		4.43	



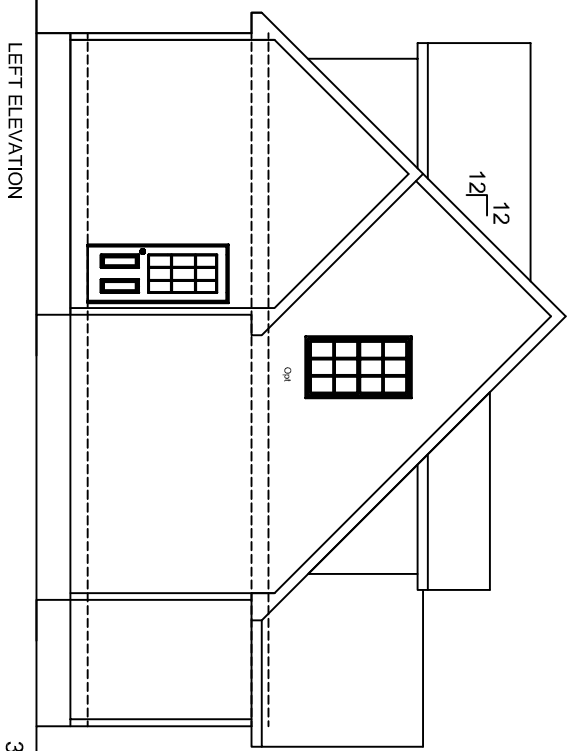
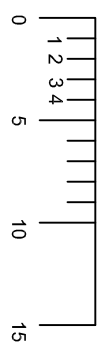
FRONT ELEVATION



RIGHT ELEVATION



REAR ELEVATION



LEFT ELEVATION

3RD PARTY SEAL

NOTES:
 1. MATERIALS FOR GABLE ENDS AND OTHER MODULE UNIONS IS SHIPPED LOOSE WITH THE UNITS. IT IS THE RESPONSIBILITY OF THE BUILDER TO INSTALL THESE COMPONENTS PER MANUFACTURERS INSTRUCTIONS
 THESE COMPONENTS INCLUDE BUT ARE NOT LIMITED TO SIDING, FASCIA, SOFFIT.
 1. MATERIALS TO COMPLETE THE ROOF ASSEMBLY IS PROVIDED BY HCH AND SHIPPED LOOSE WITH THE UNITS), IT IS THE RESPONSIBILITY OF THE BUILDER TO INSTALL THESE COMPONENTS USING THE FASTENING DETAILS PROVIDED BY HCH. THESE ITEMS INCLUDE BUT ARE NOT LIMITED TO DORMERS, GABLE END WALLS, KNEE WALLS, SHINGLES (FASTENED PER MII),

REVISIONS		DATE	REVISION	BY

MODEL:	HandCrafted Homes	BUILDER:	BLDR
DRAWN BY:	Chesterfield	DATE:	2010
DRWN	DRWN	FILENAME:	Chesterfield-07
		SCALE:	

101 Eastern Minerals Road, Henderson, N.C. 27537	SERIAL NUMBER:	SN
Phone: 252-436-0001 Fax: 252-430-6662	PAGE:	Ext. Elevation
		Sheet 1
		05.1