

W

A

X MODULES X LINE MOVES

??? FIRST FLOOR SQ FT

???

SECOND FLOOR SQ FT

???? TOTAL SQ-FT

101 Eastern Minerals Road, Henderson, N.C. 27537
Phone: 252-436-0001 Fax: 252-430-6662

SERIAL NUMBER:	PAGE:
----------------	-------

FLOORPLAN 031

A vertical number line with tick marks at 0, 1, 2, 3, 4, 5, and 10. The line is labeled 'r' at the top.

REVISIONS		
DATE	REVISION	BY

<i>HandCrafted Homes</i>		
MODEL:	BUILDER:	FILENAME:
Pinehurst	BDR	P-
DRAWN BY:	DATE:	SCALE:
DRWN	-08	3/16" = 1'-0"

101 Eastern Minerals Road, Henderson, N.C. 27537
 Phone: 252-436-0001 Fax: 252-430-6662
 SERIAL NUMBER: PAGE: FLOORPLAN SHEET 1 **03.1**

NOTES:

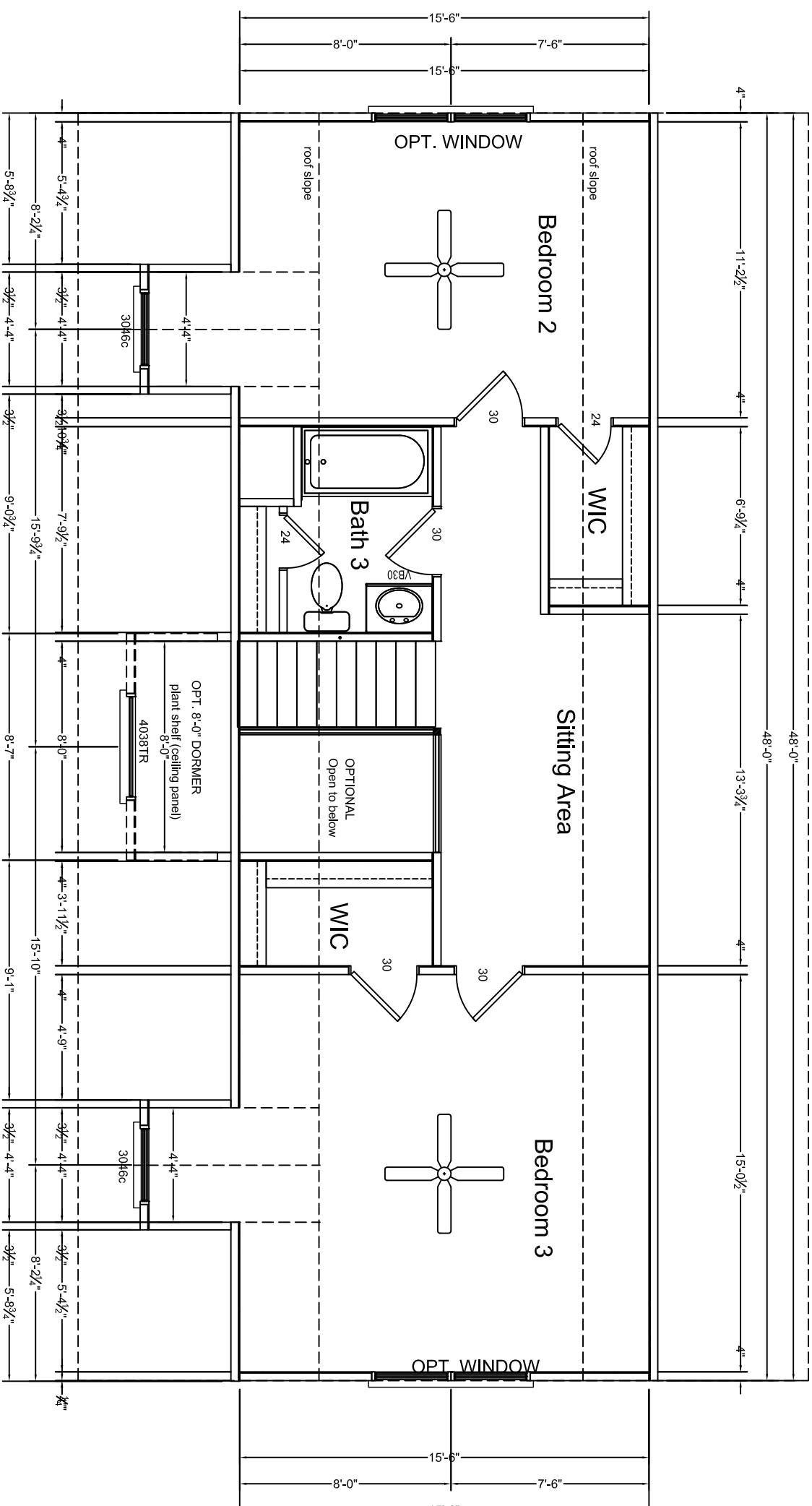
1. IT IS THE BUILDERS RESPONSIBILITY TO CONFIRM WITH THE SALES REPRESENTATIVE THAT ALL INFORMATION SHOWN ON THE PLANS HAS BEEN INCLUDED ON THE SALES ORDER.

2. THE SALES ORDER IS THE FINAL CONTRACT.

3. THE ITEMS REQUESTED MUST BE A MODIFIED SPECIFIC ITEM ON THE SALES ORDER.

4. ITEMS NOT LOCATED IN THIS MANNER WILL BE PLACED UNDER THE DISCRETION OF ENGINEERING.

5. MATERIALS TO FINISH THE MARSHALL WALL WILL BE SHIPPED LOOSE INSIDE THE UNITS, THE INSTALLATION WILL BE THE RESPONSIBILITY OF THE BUILDERS. THESE ITEMS INCLUDE, BUT ARE NOT LIMITED TO, DOORS, JAMBS, CASINGS, TRIM, SHEETROCK,

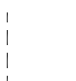
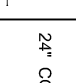








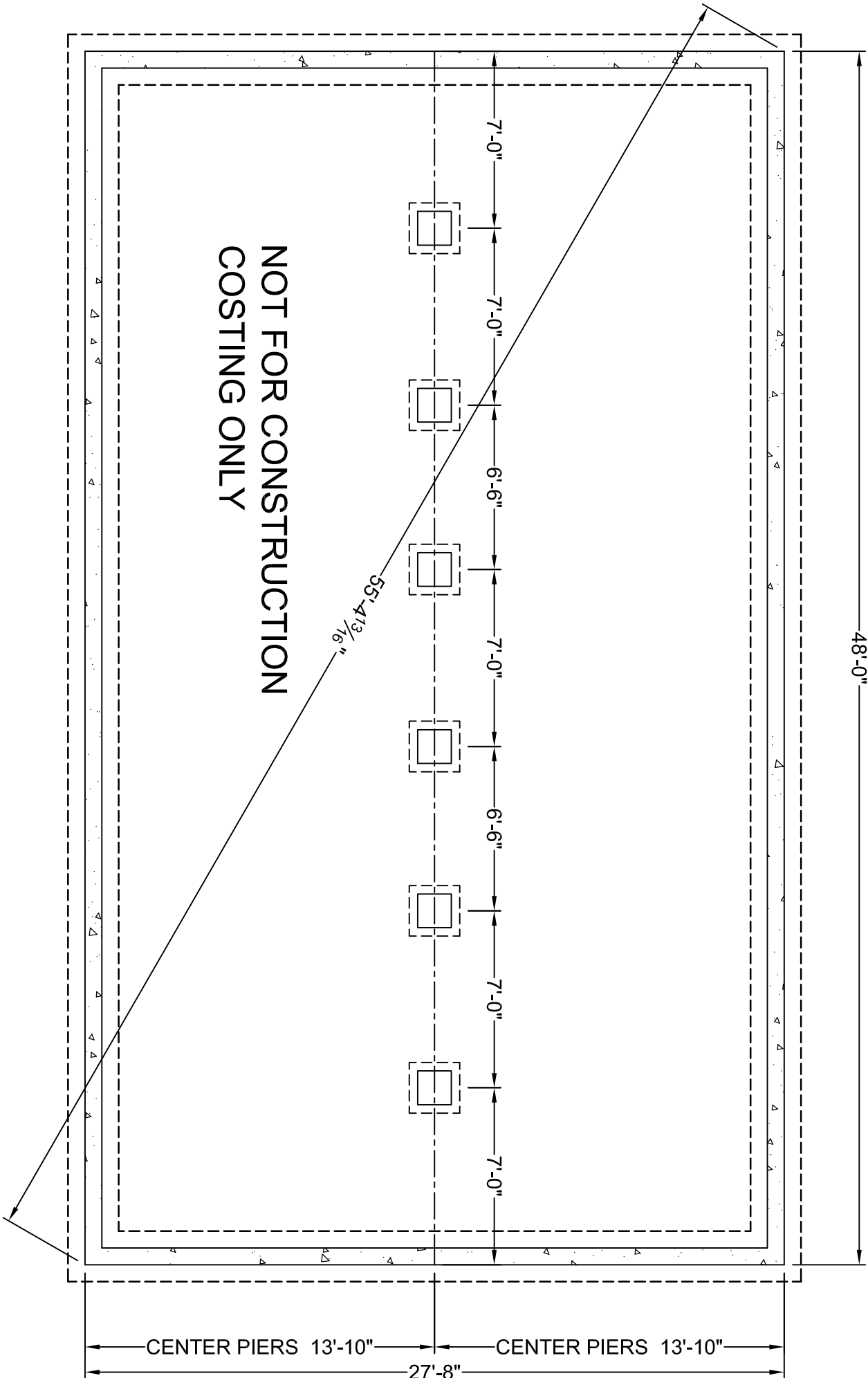
REVISIONS		<div>HandCrafted Homes</div> <div>101 Eastern Minerals Road, Henderson, N.C. 27537 Phone: 252-436-0001 Fax: 252-430-6662</div>		
DATE	REVISION			BY
MODEL:		BUILDER:	FILENAME:	
MDL		BLDR	P-	
DRAWN BY:		DATE:	SCALE:	
DRWN		-08	3/16" = 1'-0"	
SERIAL NUMBER:			PAGE:	
SN			FLOORPLAN SHEET 2 03.2	

FOUNDATION NOTES:

- 1. THIS FOUNDATION DRAWING IS PROVIDED FOR DIMENSIONAL AND LOAD PURPOSES ONLY. IT IS SIZED TO PROVIDE SUPPORT FOR THE MODEL AND SIZE HOME LISTED IN THE TITLE BLOCK. THE FOUNDATION DIMENSIONS REPRESENT THE EXTERIOR PERIMETER, SIZED TO MATCH THE HOME AFTER INSTALLATION ON THE FOUNDATION WITH ALLOWANCE FOR TYPICAL GAPPING TOLERANCES.
- 2. FOOTINGS, FOUNDATION WALLS, SUPPORT COLUMNS, AND/OR PIERS ARE TO BE CONSTRUCTED TO LOCAL CODES AND SOIL REQUIREMENTS CONSTRUCTED FOUNDATION MUST SUPPORT THE CONCENTRATED LOADS INDICATED ON THIS DRAWING.
- 3. FOUNDATION VENTING AND ACCESS OPENINGS TO MEET LOCAL REQUIREMENTS ARE THE RESPONSIBILITY OF THE BUILDER.
- 4. IT IS THE RESPONSIBILITY OF THE BUILDER TO INSTALL AND ANCHOR A PRESSURE TREATED SILL PLATE ON THE FOUNDATION WALL AND PIERS IN ACCORDANCE WITH LOCAL REQUIREMENTS.
- 5. PENETRATIONS THROUGH THE FOUNDATION OR PERIMETER FLOOR FRAMING OF THE HOUSE, FOR INSTALLATION OF PIPES, VENTS ETC. SHALL BE IN ACCORDANCE WITH LOCAL REQUIREMENTS.
- 6. OTHER FOUNDATION RELATED ITEMS SUCH AS POURED BASEMENT FLOOR, VAPOR BARRIER FOR CRAWL SPACE AND/OR DRAINAGE AS NEEDED TO MEET SITE SPECIFIC CONDITIONS AND LOCAL REQUIREMENTS.
- 7. FOUNDATION DESIGNS FOR ADDITIONAL AREAS NOT SHOWN ON THIS PLAN SUCH AS, ATTACHED PORCHES, DECKS, GARAGES, ETC. SHALL BE BY OTHERS.

FOUNDATION AREA REQUIRING VENTILATION: 1328 SF
VENTILATION REQUIRED W/O VAPOR BARRIER: 885 SF
VENTILATION REQUIRED WITH VAPOR BARRIER: 885 SF
MINIMUM ACCESS CRAWL HOLE 18" HIGH BY 24" WIDE REQUIRED.
SEE PAGE 02.1, FOUNDATION NOTES, NOTE 5

	24" CONTINUOUS FOOTING
	8" CONTINUOUS WALL
	MATE WALL PIER (CRAWLSPACE)
	16"x16" PIER 24"x24"x10" FOOTING
	MATE WALL POINT LOAD PIER(CRAWLSPACE)
	16"x16" PIER 24"x24"x10" FOOTING
	MATE WALL COLUMN (BASEMENT) 4" STEEL COLUMN W/ 8"x8" STEEL PLATE 24"x24"x10" FOOTING POINT LOAD AT LARGE OPENING
	OUTER SUPPORT PIER (CRAWLSPACE) 16"x8" PIER 24"x16"x10" FOOTING



REVISIONS					
DATE	REVISION	BY			
			MODEL:		
			Pinehurst	BUILDER:	BLDR
			DRAWN BY:	DATE:	-08
			DRWN	SCALE:	3/16" = 1'-0"
			101 Eastern Minerals Road, Henderson, N.C. 27537		
			Phone: 252-436-0001 Fax: 252-430-6662		
			SERIAL NUMBER:	PAGE:	
			SN	FOUNDATION SHEET 1	06.1