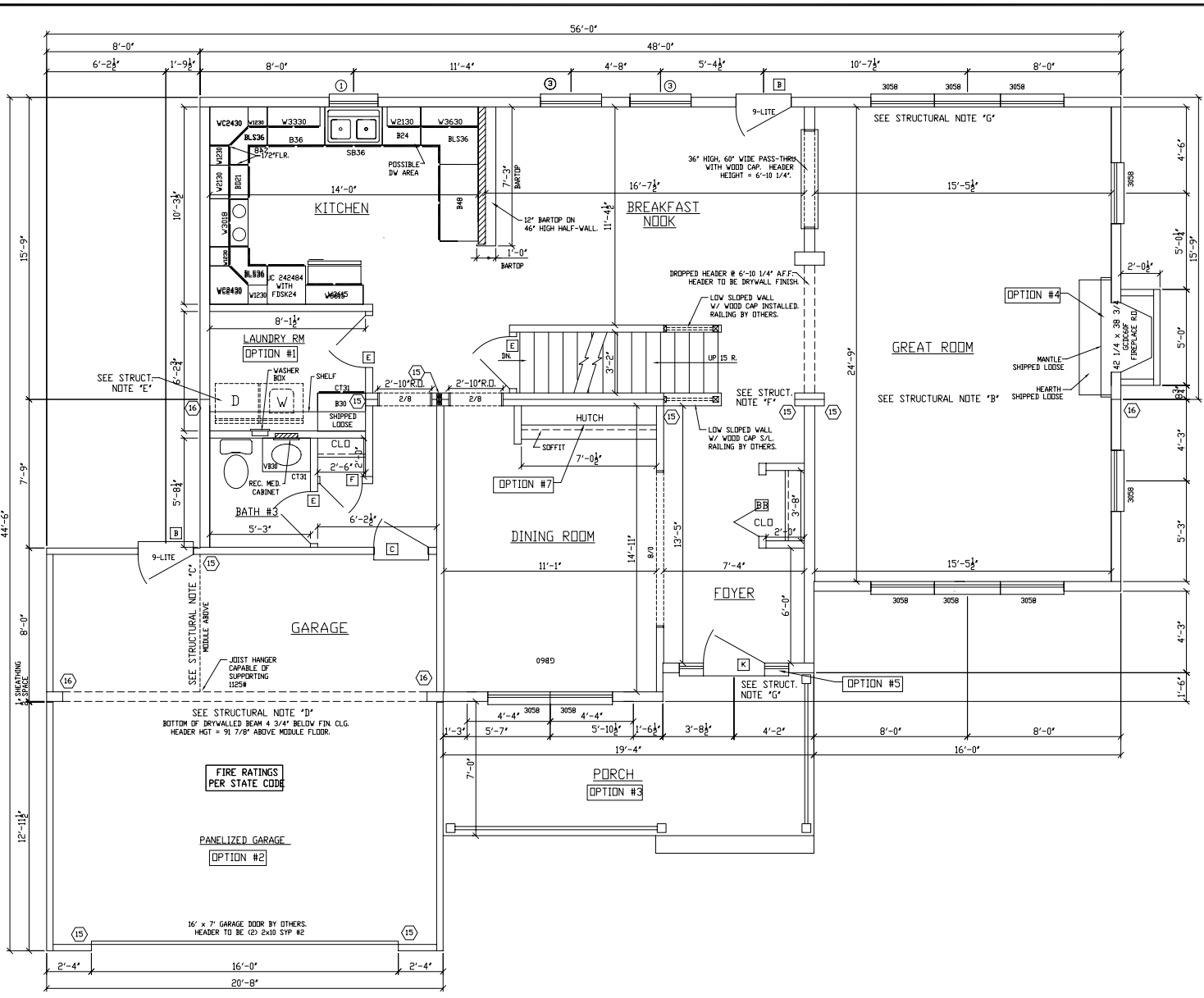


THIS DRAWING IS FOR REFERENCE ONLY and may be used in conjunction with the actual drawings and details. It is not to be used as an approximate representation. Actual dimensions and overall appearance may differ due to construction techniques and are beyond the control of AVIS AMERICA.  
 In Signing I Acknowledge I Have Received and Accept this print



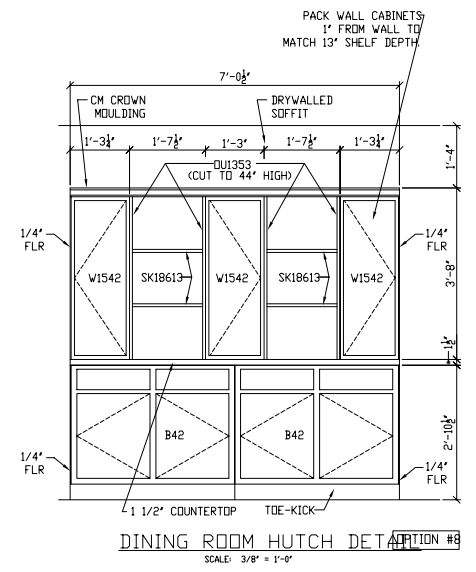
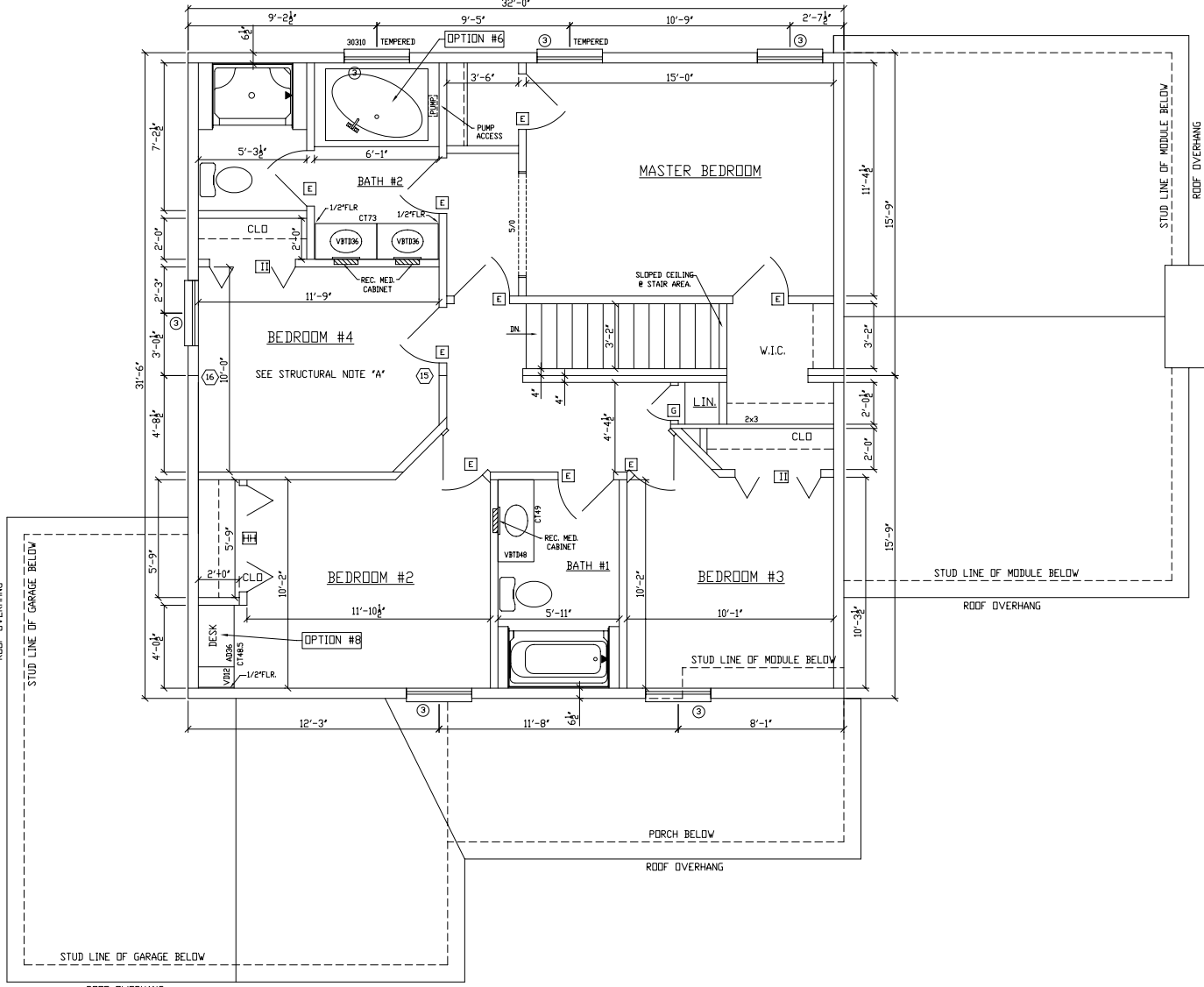
- PLAN OPTION LEGEND:**
- NOTE: OPTIONS SHOWN ON PLAN AS DESCRIBED BELOW ARE NOT INCLUDED IN THE BASE PRICE.
- OPTION #1 = OPTIONAL WASHER AND ELECTRIC DRYER HOOK-UP. SHELF INCLUDED WITH OR WITHOUT WASHER/ DRYER HOOK-UP.
  - OPTION #2 = OPTIONAL PANELIZED GARAGE. WALLS TO BE BUILT AS PANELS, ROOF TRUSSES AND MATERIALS SHIPPED LOOSE. SADDLE MATERIALS SHIPPED LOOSE WHEN GARAGE ROOF JOINS MODULAR ROOF.
  - OPTION #3 = OPTIONAL PORCH ROOF MATERIALS SHIPPED LOOSE. PORCH FLOOR, COLUMNS AND RAILING BY OTHERS.
  - OPTION #4 = OPTIONAL 5500 SERIES FIREPLACE, MANTEL, HEARTH, AND EXTERIOR CHASE.
  - OPTION #5 = OPTIONAL 5-LITE SIDELIGHTS - CS308W PER SIDE. STANDARD DOES NOT INCLUDE SIDELITES.
  - OPTION #6 = OPTIONAL "VENUS 1" WHIRLPOOL # 460421LX SHOWN. "VENUS 1" SOAKING TUB # 460420LX STANDARD.
  - OPTION #7 = OPTIONAL BUILT-IN HUTCH BY MANUFACTURER - SEE DETAIL ON SHEET 2B.
  - OPTION #8 = OPTIONAL BUILT-IN DESK BY MANUFACTURER.

- STRUCTURAL NOTES:**
- A) (1) 1 1/2"x 14" LAM. BEAM CEILING GIRDER PER MODULE.
  - B) (1) 1 1/2"x 18" LAM. BEAM CEILING GIRDER PER MODULE.
  - C) (2) 2X12 SPF#2 CEILING GIRDER.
  - D) (3) 1 1/2"x 16" LAM. CEILING GIRDER TO BE MOUNTED FLUSH TOP OF BEAM WITH TOP OF 2X12 CEILING JOIST PERIMETER.
  - E) STANDARD (2) 2X12 SPF#2 CEILING GIRDER AND (2) 2X10 SYP#2 GIRDER ABOVE PER MODULE.
  - F) (1) 1 1/2"x 11 1/4" LAM BEAM CEILING GIRDER, (1) 2X12 SPF#2 CEILING GIRDER, AND (2) 2X10 SYP#2 FLOOR GIRDER ABOVE PER MODULE.
  - G) (3) 2X10 SYP#2 HEADER.

- STUD COLUMN LEGEND:**
- 15 = (2) 2x4 STUD GRADE COLUMNS EACH MODULE
  - 16 = (2) 2x6 STUD GRADE COLUMNS EACH MODULE
  - 18 = (3) 2x4 STUD GRADE COLUMNS EACH MODULE
  - 19 = (3) 2x6 STUD GRADE COLUMNS EACH MODULE

OPTIONS SHOWN ON PLANS AND ELEVATIONS ARE NOT IN THE "BASE PRICE". OPTIONS TO BE SPECIFIED ON THE ACTUAL SALES ORDER FORM.

**Excel Homes**  
*Building Excellence*  
 7292EL JANBROOK (TWO STORY)  
 1ST FLOOR  
 DRAWN BY: J.P.J. CHECKED BY: J.P.J. DATE: 6/21/02 SCALE: 3/16=1'-0"  
 SN- /PD-?/ STATE  
 BLDR/ CUST.  
 SHEET #



OPTIONS SHOWN ON PLANS AND ELEVATIONS ARE NOT IN THE "BASE PRICE". OPTIONS TO BE SPECIFIED ON THE ACTUAL SALES ORDER FORM.

This drawing is for REFERENCE ONLY and may be used in conjunction with other drawings. All dimensions are approximate and appearance may differ due to construction techniques and conflicts that are beyond the control of AVIS AMERICA.

In Signing I Acknowledge I Have Received and Accept this print

2481 SQ. FT. / 7292EL JANBROOK (TWO STORY) 2ND FLOOR

DATE: 6/21/02

CHECKED BY: J.P.

SN- /PJ-? STATE BLDG/ CUST.

REVISIONS

**Excel Homes**

*Building Excellence*

SHEET #