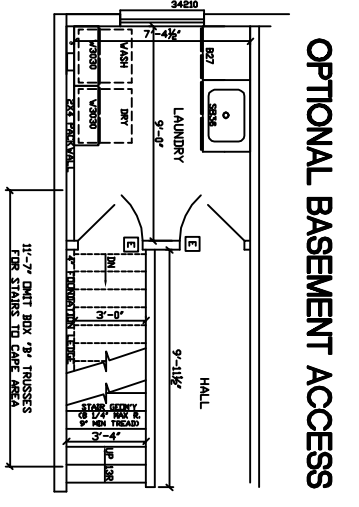
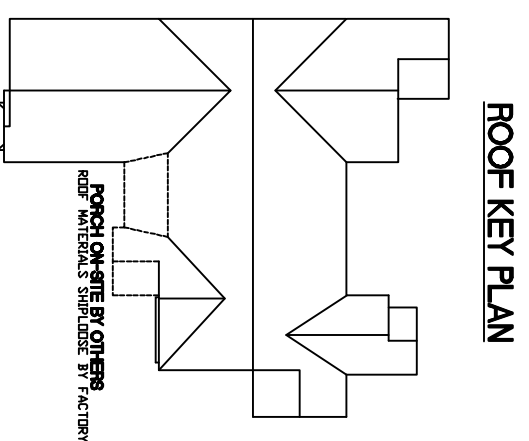
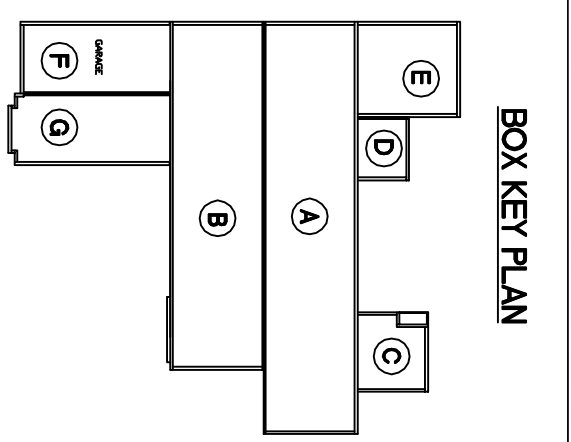
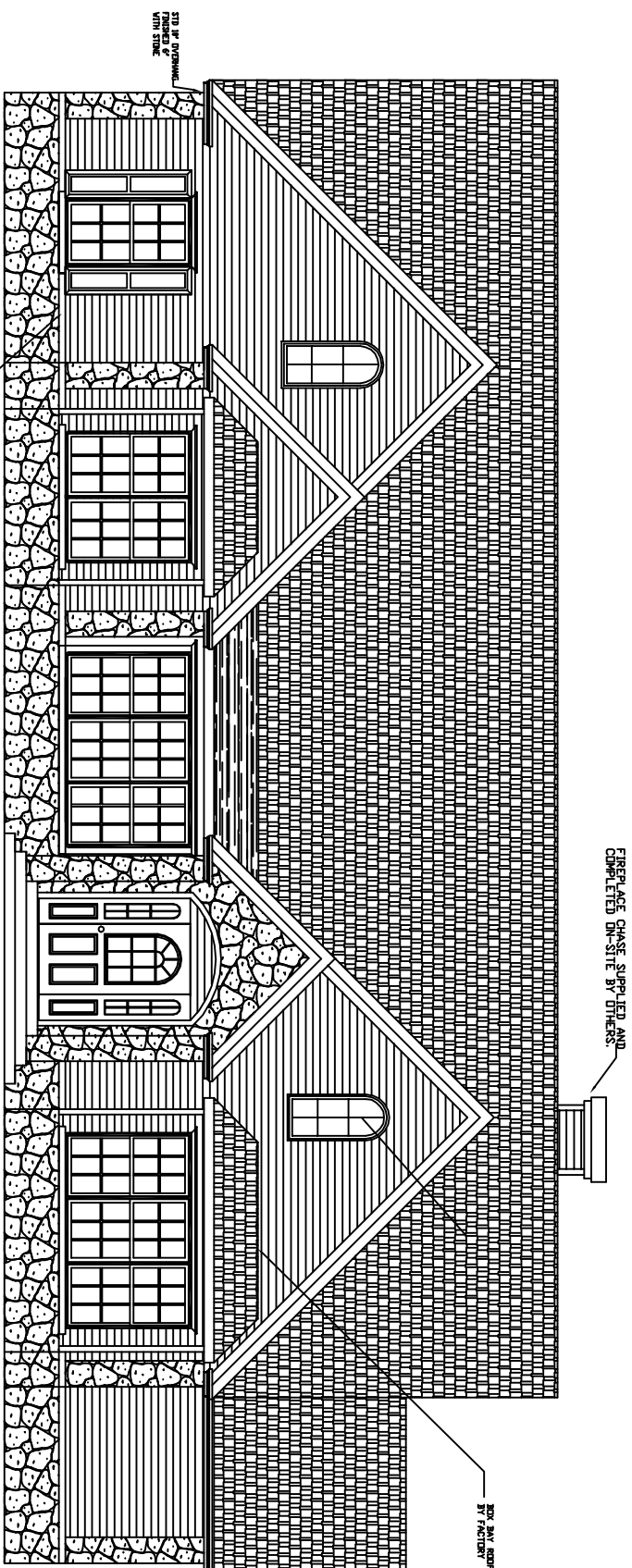


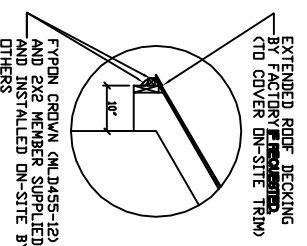
- NOTES:
1. 2x6 EXT WALLS @ 24" O.C./2x3 MARR WALLS
 2. 8'-0" CLG HT.
 3. 2x10 SPF #2 FLDR JOISTS @ 16" O.C.
 4. ROOF SYSTEM TO BE 24" O.C.
 5. MV SINGLE HUNG MODULAR WINDOWS (#1=24210, #2=2842, #3=3045, #4=2852, #11=2856E)
 6. 777 MPH WIND ZONE/ALL DOORS & WINDOWS MINIMUM DP ?? IN EXPOSURE ??
 - 7.
 - 8.
 - 9.
 - 10.



EXCEL HOMES WEB SITE: EXCELHOMES.COM		COPYRIGHT © 2006 THIS DOCUMENT AND THE SUBJECT MATTER CONTAINED HEREIN IS PROPRIETARY AND MAY NOT BE REPRODUCED WITHOUT THE WRITTEN PERMISSION OF EXCEL HOMES LLC	
BOX KEY PLAN		ROOF KEY PLAN	
OPTIONAL BASEMENT ACCESS		PORCH ON-SITE BY OTHERS ROOF MATERIALS SHIP/DISE BY FACTORY	
CUSTOMER/PROJECT: BUILDER:	REVISIONS BY:	DATE: DRAWN BY:	CHECKED BY: SCALE: 1/8" = 1'-0"
FILE: SQ.FT.: 2,396	MODEL: JAMISON	STATE: TYPE:	SHEET: 2

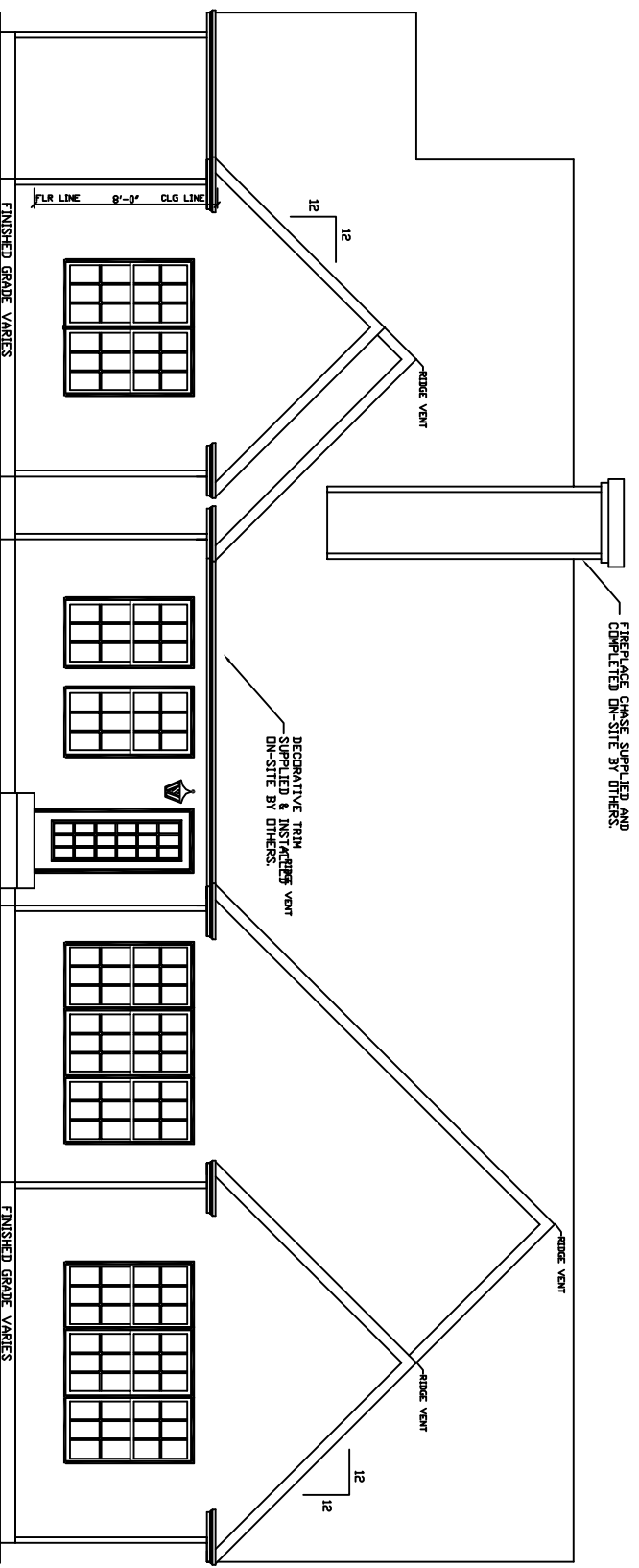


FRONT ELEVATION



ROOF PITCHES -
 MAIN ROOF - 12/12
 GARAGE/PORCH ROOF - 12/12
 BUMP-OUTS - 12/12

REAR ELEVATION



REAR ELEVATION

excel HOMES

WEB SITE:
 EXCELHOMES.COM

COPYRIGHT © 2006
 THIS DOCUMENT AND THE SUBJECT MATTER CONTAINED HEREIN IS PROPRIETARY AND MAY NOT BE REPRODUCED WITHOUT THE WRITTEN PERMISSION OF EXCEL HOMES LLC

CUSTOMER/PROJECT:
 BUILDER:

REV#	DATE	REVISIONS	BY

SCALE: 1/8"=1'-0"

DRAWN BY: DATE: CHECKED BY:

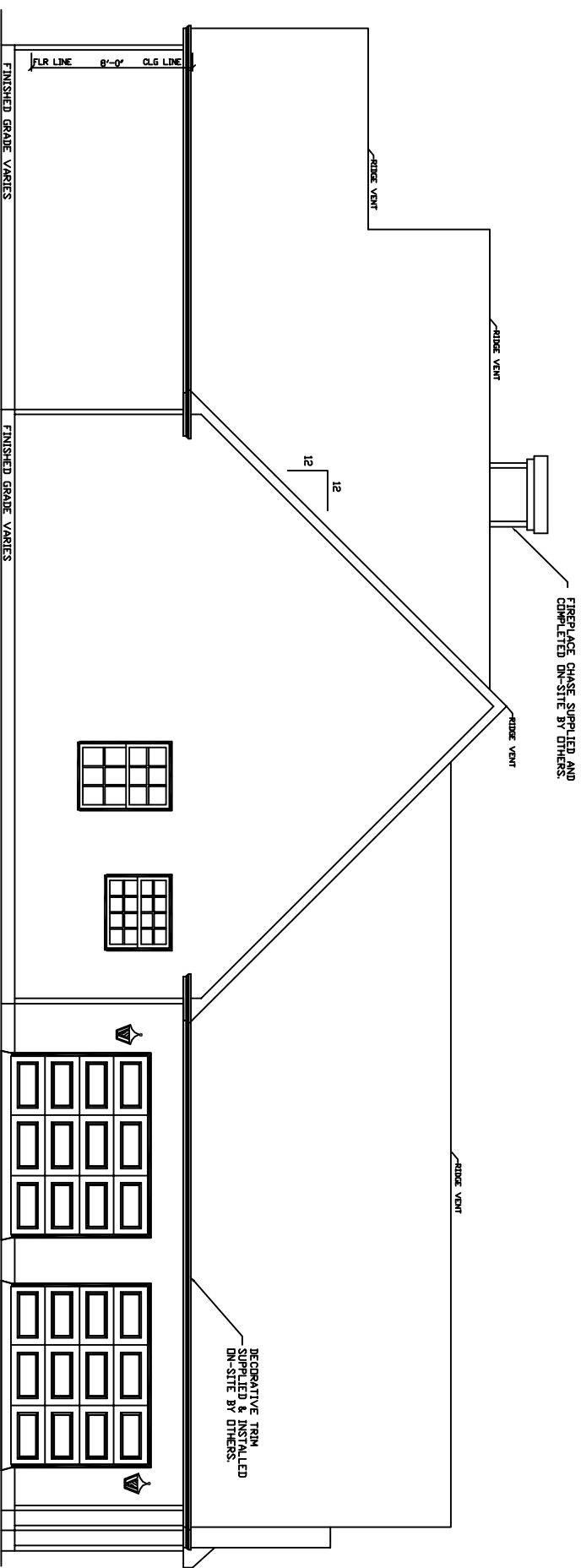
FILE: 2,396

STATE: 4A

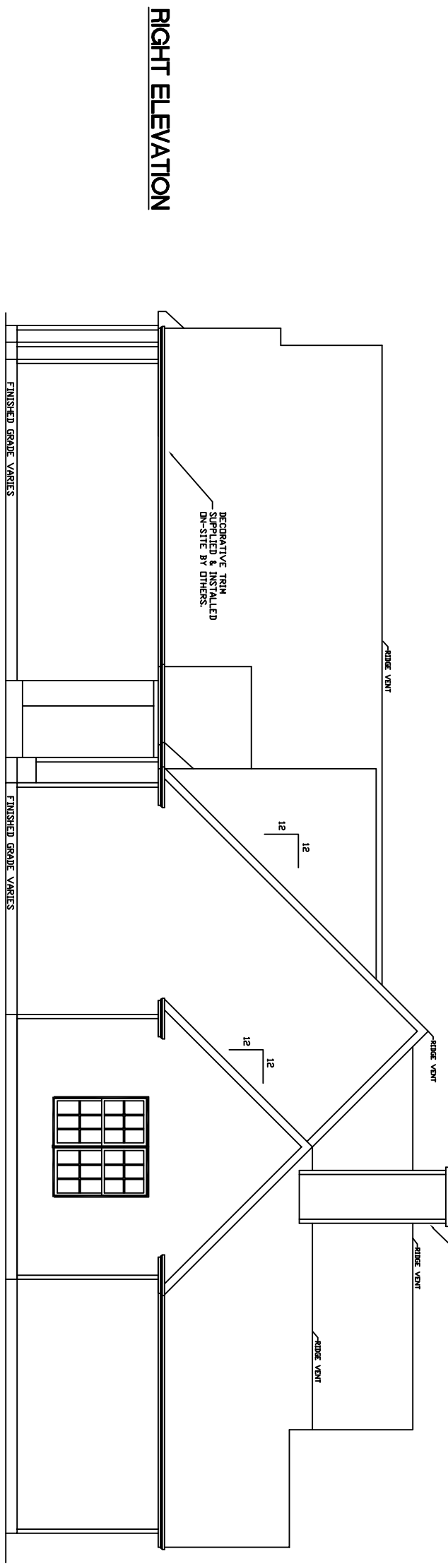
MODEL: JAMISON

DRAWING: FRONT & REAR ELEVATIONS

SHEET: 4A



LEFT ELEVATION



RIGHT ELEVATION



WEB SITE:
EXCELHOMES.COM

COPYRIGHT © 2006
THIS DOCUMENT AND THE SUBJECT MATTER CONTAINED HEREIN IS PROPRIETARY AND MAY NOT BE REPRODUCED WITHOUT THE WRITTEN PERMISSION OF EXCEL HOMES LLC

CUSTOMER/PROJECT:
BUILDER:

REV#	DATE	REVISIONS	BY

DRAWN BY: _____ DATE: _____ SCALE: 1/8"=1'-0" CHECKED BY: _____

FILE: _____
 SQ.FT.: 2,396
 STATE: _____
 TYPE: _____
 MODEL: JAMISON
 DRAWING: LEFT & RIGHT ELEVATIONS
 SHEET: 4B