

PLAN OPTION LEGEND:

NOTE: OPTIONS SHOWN ON PLAN AS DESCRIBED BELOW ARE NOT INCLUDED IN THE BASE PRICE.

- OPTION #1= OPTIONAL WASHER AND ELECTRIC DRYER HOOK-UP. SHELF INCLUDED WITH OR WITHOUT WASHER/DRYER HOOK-UP.
- OPTION #2= OPTIONAL PANELIZED GARAGE. WALLS TO BE BUILT AS PANELS, ROOF TRUSSES AND MATERIALS SHIPPED LOOSE. SADDLE MATERIALS SHIPPED LOOSE WHEN GARAGE ROOF JOINS MIDDLE-RAMP ROOF.
- OPTION #3= OPTIONAL PORCH ROOF MATERIALS SHIPPED LOOSE. PORCH FLOOR, COLUMNS AND RAILING BY OTHERS.
- OPTION #4= OPTIONAL GONGOSOF FIREPLACE, MANTEL, HEARTH. FIREPLACE TO BE DIRECT-VENTED TO THE EXTERIOR THROUGH THE ADJACENT DRYWALLED SOFFIT.
- OPTION #5= OPTIONAL 5-LITE SIDELIGHTS - 43590V PER SIDE. STANDARD DOES NOT INCLUDE SIDELITES.
- OPTION #6= OPTIONAL "VENUS II" WHIRLPOL # 57242LX SHOWN. "VENUS II" SOWING TUB # 57242LX STANDARD.
- OPTION #7= OPTIONAL BUILT-IN SEAT - 16" DEEP, 1 1/2" THICK LAMINATED SEAT @ 19" AFF. BOTTOM OF SEAT CLOSED-OFF WITH PL/WOOD TO MATCH CABINETS.
- OPTION #8= OPTIONAL BUILT-IN DESK BY MANUFACTURER.
- OPTION #9= OPTIONAL BUILT-IN ENTERTAINMENT CENTER BY MANUFACTURER - SEE DETAIL.

STRUCTURAL NOTES:

- A) (3) 1 1/2"x 18" LAM. CEILING GIRDER TO BE MOUNTED FLUSH TOP OF BEAM WITH TOP OF 2x12 CEILING JOIST PERIMETER.
- B) (3) 1 1/2"x 18" LAM. BEAM CEILING GIRDER. TOP OF BEAM TO BE CHAMFERED 7" ON EACH END LEAVING 16" IN BEAM DEPTH AT BEARING POINT.
- C) (3) 1 1/2"x 14" LAM. BEAM CEILING GIRDER. TOP OF BEAM TO BE CHAMFERED 2" ON EACH END LEAVING 14" IN BEAM DEPTH AT BEARING POINT.
- D) (3) 2x10 SYP#2 HEADER.
- E) (2) 2x12 SYP#2 CEILING GIRDER AND (2) 2x10 SYP#2 FLOOR GIRDER ABOVE.

STUD COLUMN LEGEND:

- (15) = (2) 2x4 STUD GRADE COLUMNS EACH MODULE
- (16) = (2) 2x6 STUD GRADE COLUMNS EACH MODULE
- (18) = (3) 2x4 STUD GRADE COLUMNS EACH MODULE
- (19) = (3) 2x6 STUD GRADE COLUMNS EACH MODULE

OPTIONS SHOWN ON PLANS AND ELEVATIONS ARE NOT IN THE 'BASE PRICE'. OPTIONS TO BE SPECIFIED IN THE ACTUAL SALES ORDER FORM.

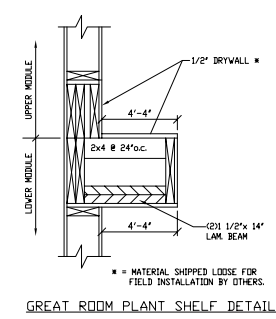
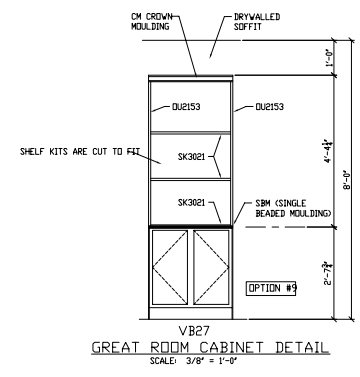
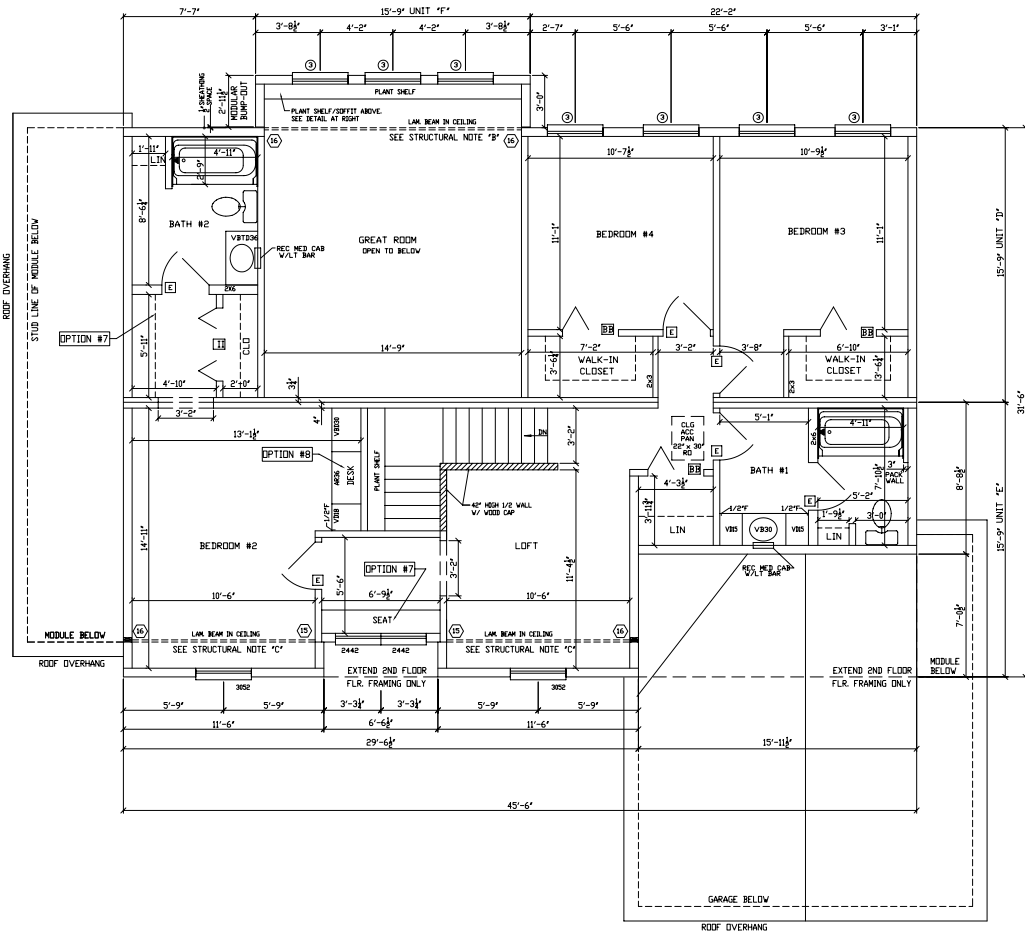
This Drawing is for REFERENCE ONLY and may be used in conjunction with STRUCTURAL DRAWINGS AND DETAILS. These prints are drawn as APPROXIMATE REPRESENTATIONS. Actual dimensions and overall area are beyond the control of AVIS AMERICA.

In Signing I Acknowledge I Have Received and Accept this print

REVISIONS

Excel Homes
Building Excellence™

7298EL HIGHLAND (TWO STORY)
1ST FLOOR
DATE: 6/21/02 SCALE: 1/8"=1'-0"
DRAWN BY: JJP CHECKED BY: /PD-??/ STATE
SN- BLDG/ CUST.



OPTIONS SHOWN ON PLANS AND ELEVATIONS ARE NOT IN THE "BASE PRICE". OPTIONS TO BE SPECIFIED IN THE ACTUAL SALES ORDER FORM.

3002 SQ. FT. 7298EL HIGHLAND (TWO STORY) 2ND FLOOR
 DRAWN BY: JPJ CHECKED BY: DATE: 6/21/02 SCALE: 1/8"=1'-0"
 SN- /PD-?/ STATE BLDR/ CUST.

REVISIONS
 1. _____
 2. _____
 3. _____
 4. _____
 5. _____
 6. _____
 7. _____

This Drawing is for REFERENCE ONLY and may be used in conjunction with STRUCTURAL DRAWINGS AND DETAILS. These prints are drawn as APPROXIMATE REPRESENTATIONS. Actual dimensions and overall appearance may differ due to construction techniques and conflicts that are beyond the control of AVIS AMERICA.
 In Signing I Acknowledge I Have Received and Accept this print