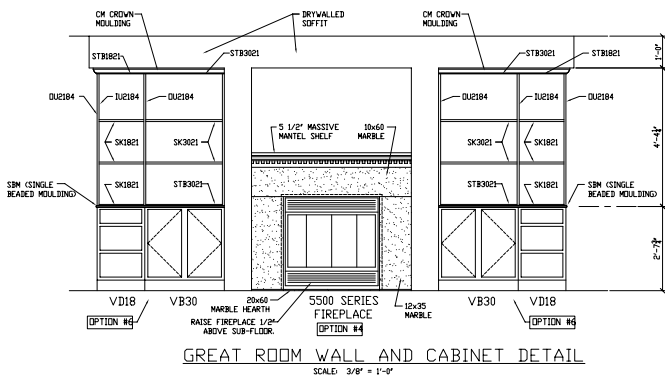
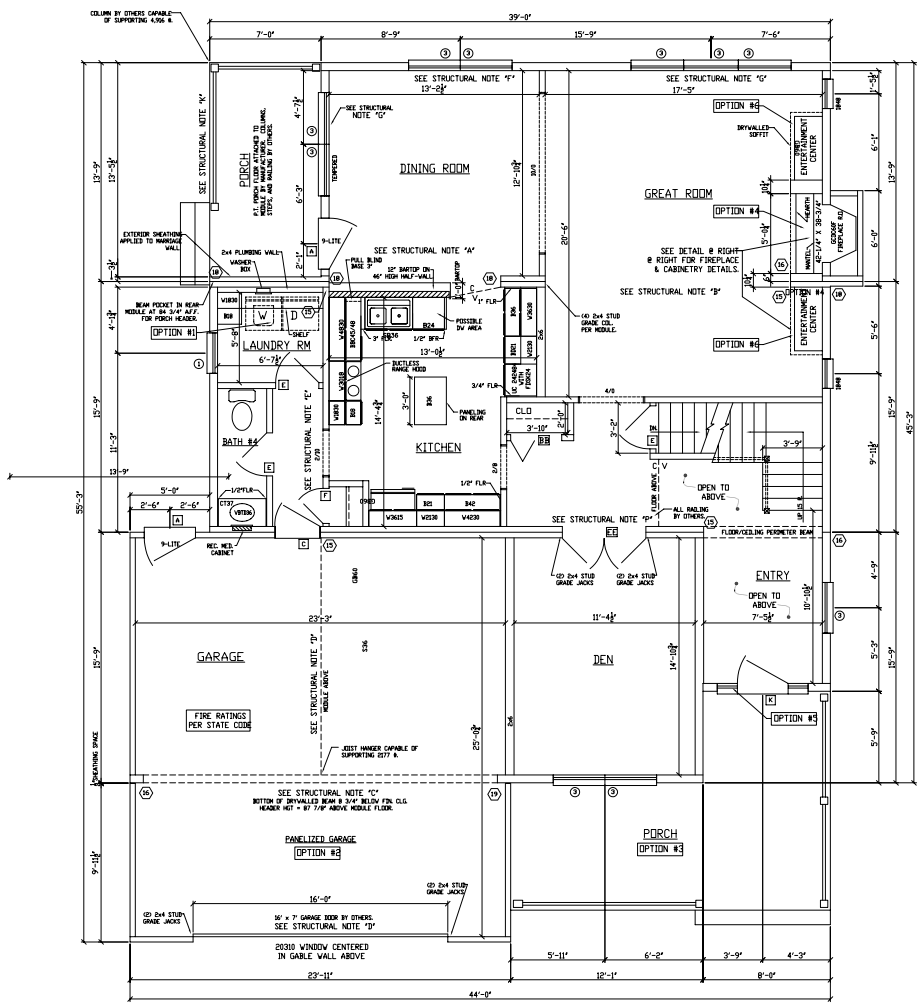


This drawing is for REFERENCE ONLY and may be used in conjunction with other drawings and specifications. These prints are not to be drawn or reproduced without the express written permission of the architect. The appearance may differ due to construction techniques and conflicts that are beyond the control of AVIS AMERICA.

In Signing I Acknowledge I Have Received and Accept this print



PLAN OPTION LEGEND:

- NOTE: OPTIONS SHOWN ON PLAN AS DESCRIBED BELOW ARE NOT INCLUDED IN THE BASE PRICE.
- OPTION #1 = OPTIONAL WASHER AND ELECTRIC DRYER HOOK-UP. SHELF INCLUDED WITH OR WITHOUT WASHER/DRYER HOOK-UP.
 - OPTION #2 = OPTIONAL PANELIZED GARAGE. WALLS TO BE BUILT AS PANELS, ROOF TRUSSES AND MATERIALS SHIPPED LOOSE. SADDLE MATERIALS SHIPPED LOOSE WHEN GARAGE ROOF JOINS MODULAR ROOF.
 - OPTION #3 = OPTIONAL PORCH ROOF MATERIALS SHIPPED LOOSE. PORCH FLOOR, COLUMNS AND RAILING BY OTHERS.
 - OPTION #4 = OPTIONAL 5500 SERIES FIREPLACE, MANTEL, HEARTH, AND EXTERIOR CHASE.
 - OPTION #5 = OPTIONAL 5-LITE SIDELIGHTS - C300W PER SIDE. STANDARD DOES NOT INCLUDE SIDELITES.
 - OPTION #6 = OPTIONAL BUILT-IN ENTERTAINMENT CENTER BY MANUFACTURER - SEE DETAIL.
 - OPTION #7 = OPTIONAL WINDOW OVER GARAGE DOOR.
 - OPTION #8 = OPTIONAL POCKET DOOR. STANDARD IS A 2/6 SWING DOOR.

STRUCTURAL NOTES:

- A) (2) 2x12 SPP#2 CEILING BEAMS & (2) 2x10 SYP #2 2ND FLR BEAMS PER MODULE. SEE NOTE 'M' BELOW FOR BEAM SUPPORTING ROOF LOADING ABOVE.
- B) (2) 11/4\"
- C) (3) 1 1/2\"
- D) (2) 1 1/2\"
- E) (1) 1 1/2\"
- F) (3) 2x10 SYP#2 HEADER.
- G) (3) 1 1/2\"
- H) NOTE OMITTED.
- J) (2) 2x10 SYP #2 NON-LOAD-BEARING HEADER.
- K) (3) 1 1/2\"
- L) (1) 2\"
- M) SEE NOTE 'L' ABOVE.
- N) (1) 9/4\"
- P) (2) 1 1/2\"

OPTIONS SHOWN ON PLANS AND ELEVATIONS ARE NOT IN THE "BASE PRICE". OPTIONS TO BE SPECIFIED ON THE ACTUAL SALES ORDER FORM.

STUD COLUMN LEGEND:

- (15) = (2) 2x4 STUD GRADE COLUMNS EACH MODULE
- (16) = (2) 2x6 STUD GRADE COLUMNS EACH MODULE
- (18) = (3) 2x4 STUD GRADE COLUMNS EACH MODULE
- (19) = (3) 2x6 STUD GRADE COLUMNS EACH MODULE

REVISIONS
1
2
3
4
5
6
7

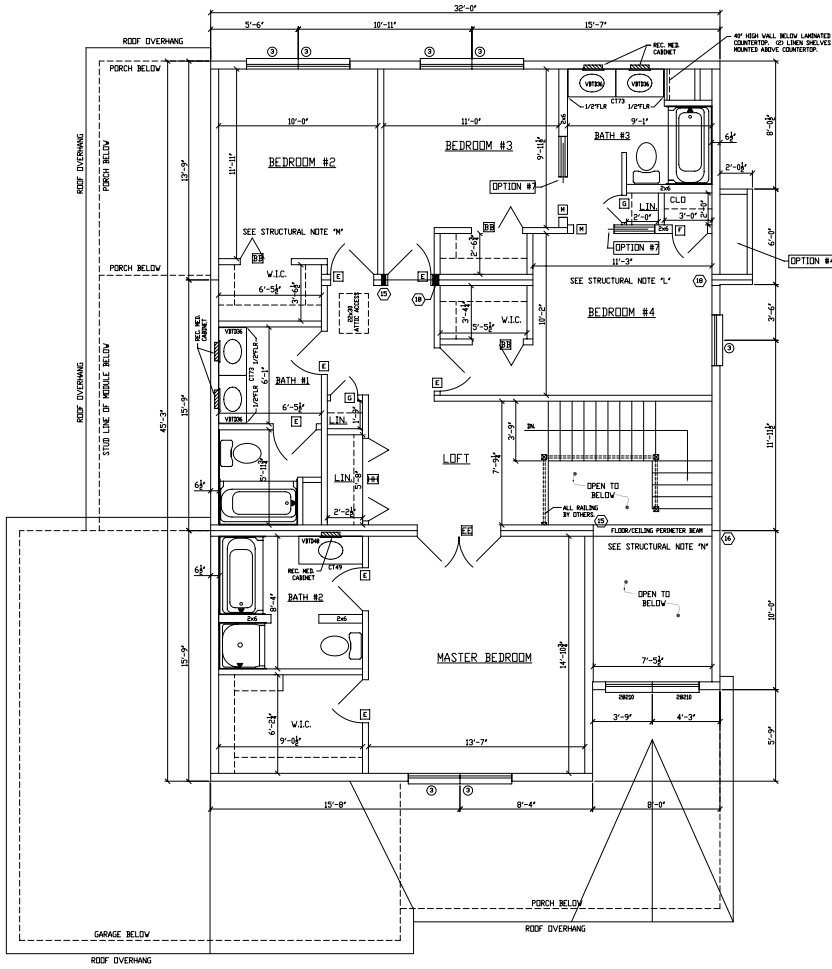
Excel Homes
Building Excellence™

3200 SQ. FT.
7296EL GLEN SPRINGS (TWO STORY)
1ST FLOOR

DRAWN BY: JPJ
CHECKED BY: ---
DATE: 6/21/02

SCALE: 1/8"=1'-0"
/PD-?/ STATE
BLDR/ CUST.

SHEET #:



OPTIONS SHOWN ON PLANS AND ELEVATIONS ARE NOT IN THE "BASE PRICE". OPTIONS TO BE SPECIFIED ON THE ACTUAL SALES ORDER FORM.

2800 SQ. FT.
 7296EL GLEN SPRINGS (TWO STORY)
 2ND FLOOR
 DRAWN BY: J.P.J. CHECKED BY: --- DATE: 6/21/02 SCALE: 1/8"=1'-0"
 SN- /PD-?/ STATE BLDG/ CUST.

REVISIONS
Excel Homes
Building Excellence

This Drawing is for REFERENCE ONLY and may be used in conjunction with STRUCTURAL DRAWINGS AND DETAILS. These prints are drawn as per the specifications and dimensions and are not to be used for construction techniques and conflicts that are beyond the control of AVIS AMERICA.
 In Signing I Acknowledge I Have Received and Accept this print: