

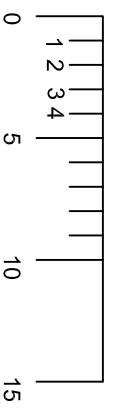
REAR ELEVATION

FRONT ELEVATION

LEFT ELEVATION

RIGHT ELEVATION

NOTES:  
 1. MATERIALS FOR GABLE ENDS AND OTHER MODULE LINKS OF THE BUILDER TO INSTALL THESE COMPONENTS PER MANUFACTURERS' INSTRUCTIONS. THESE COMPONENTS INCLUDE BUT ARE NOT LIMITED TO SIDING, FASCIA, SOFFIT.  
 1. MATERIALS TO COMPLETE THE ROOF ASSEMBLY IS PROVIDED BY HCH.  
 1. MATERIALS TO COMPLETE THE ROOF ASSEMBLY IS PROVIDED BY HCH.  
 THE BUILDER TO INSTALL THESE COMPONENTS USING THE FASTENING DETAILS PROVIDED BY HCH. THESE ITEMS INCLUDE BUT ARE NOT LIMITED TO DOWNERS, GABLE END WALLS, KNEE WALLS, SHINGLES (FASTENED PER WILL).



REVISIONS		BY
DATE	REVISION	

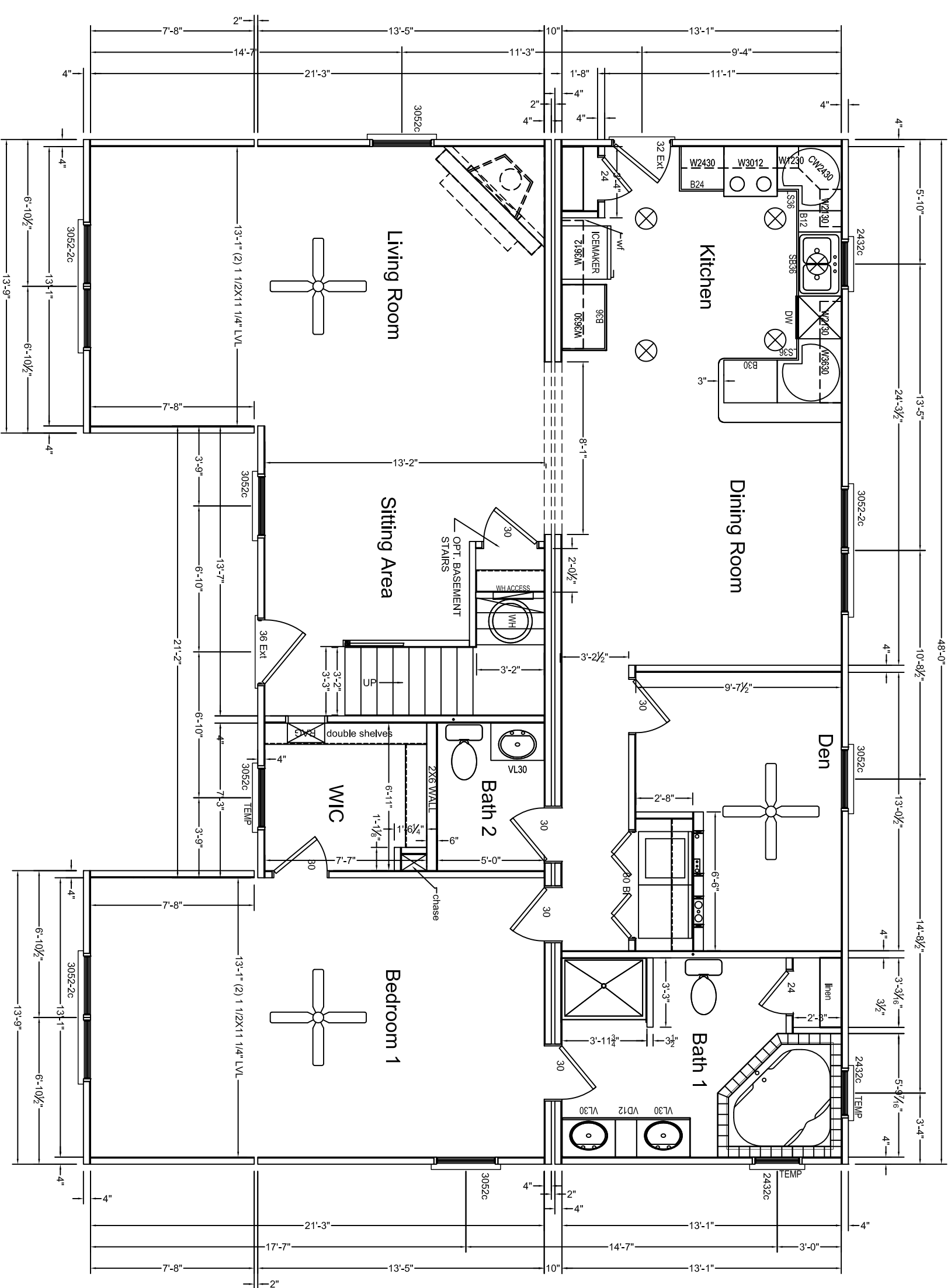
**HandCrafted Homes**  
 101 Eastern Minerals Road, Henderson, N.C. 27537  
 Phone: 252-436-0001 Fax: 252-430-6662

MODEL: Rockford  
 BUILDER: BLDR  
 DATE: -08

FILENAME: P.  
 SCALE: 1/8" = 1'-0"

SERIAL NUMBER: **SN**  
 PAGE: EXT ELEV SHEET 1 **05.1**

DRAWN BY: DRWN



NOTES:  
 1. THE BUILDER'S RESPONSIBILITY TO CONFORM WITH THE SALES REPRESENTATIVE THAT ALL INFORMATION SHOWN ON THE PLANS HAS BEEN INCLUDED ON THE SALES ORDER.  
 2. THE SALES ORDER IS THE FINAL CONTRACT.  
 3. PHONE, TV, RECESSED LIGHTS AND ANY OTHER SPECIFIC ITEM ON THE SALES ORDER MUST BE LOCATED ON A SIGNED FLOOR PLAN.  
 4. ITEMS LOCATED IN THIS DRAWING WILL BE PLACED UNDER THE SALES ORDER.  
 5. MATERIALS TO FINISH THE WALLS WILL BE SHIPPED LOOSE INSIDE THE UNITS. THE INSTALLATION WILL BE THE RESPONSIBILITY OF THE BUILDER. THESE ITEMS INCLUDE BUT ARE NOT LIMITED TO DOORS, JAMBS, CASINGS, TRIM, SHEETROCK.

1	2	3	4	5	10	15
---	---	---	---	---	----	----

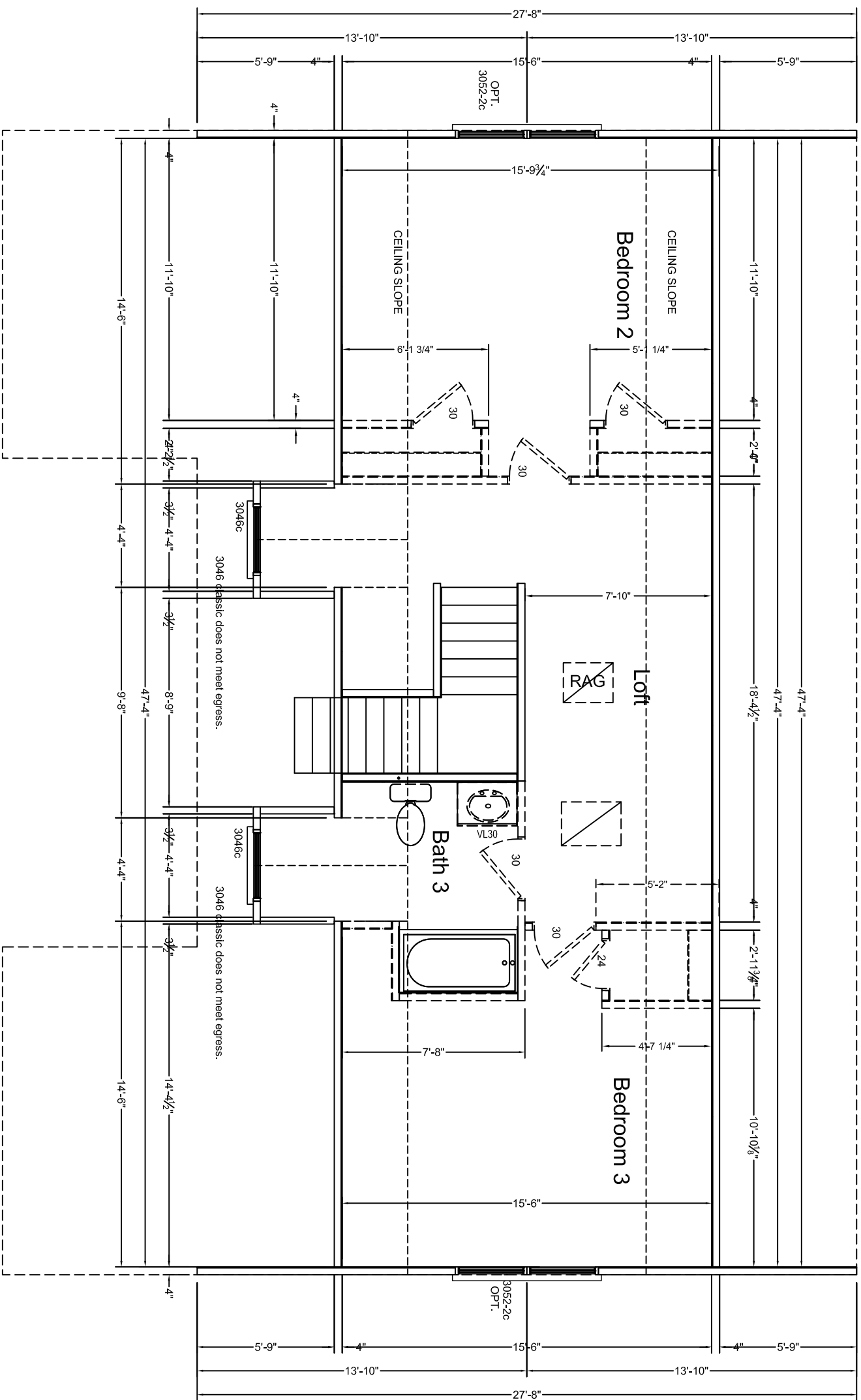
REVISIONS	
DATE	REVISION

BY:	MODEL:	<b>HandCrafted Homes</b>
	Rockford	
DRAWN BY:	BLDR:	
	DATE:	-08
	SCALE:	3/16" = 1'-0"

101 Eastern Minerals Road, Henderson, N.C. 27537	PAGE:
Phone: 252-436-0001 Fax: 252-430-6862	FLOORPLAN SHEET 1
SERIAL NUMBER:	<b>03.1</b>

4 MODULES 2 LINE MOVES  
 Truss #12M3  
 Truss #12A3  
 FIRST FLOOR 1552 SQ FT  
 SECOND FLOOR 802 SQ FT UNFINISHED  
 TOTAL 2354 SQ FT

FOR SECOND FLOOR LIVING AREA  
 ALL DESIGN, MATERIALS, AND WORK  
 TO BE THE RESPONSIBILITY OF THE  
 BUILDER ON SITE. INSULATION MUST  
 REMAIN R-30 IN THE ROOF AND  
 R-13 IN THE WALLS. LIGHT, VENT &  
 EGRESS IS THE RESPONSIBILITY  
 OF THE BUILDER ON SITE.



# SUGGESTED LAYOUT FOR UNFINISHED 2nd FLOOR

REVISIONS		MODEL: <b>HandCrafted Homes</b>		FILENAME: P-		SERIAL NUMBER: SN	
DATE	REVISION	BY	BLDR	DATE	SCALE:	PAGE:	FLOORPLAN SHEET 2
		Rockford			3/16" = 1'-0"		03.2
		DRWN		-08			

101 Eastern Minerals Road, Henderson, N.C. 27537  
 Phone: 252-436-0001 Fax: 252-430-6662