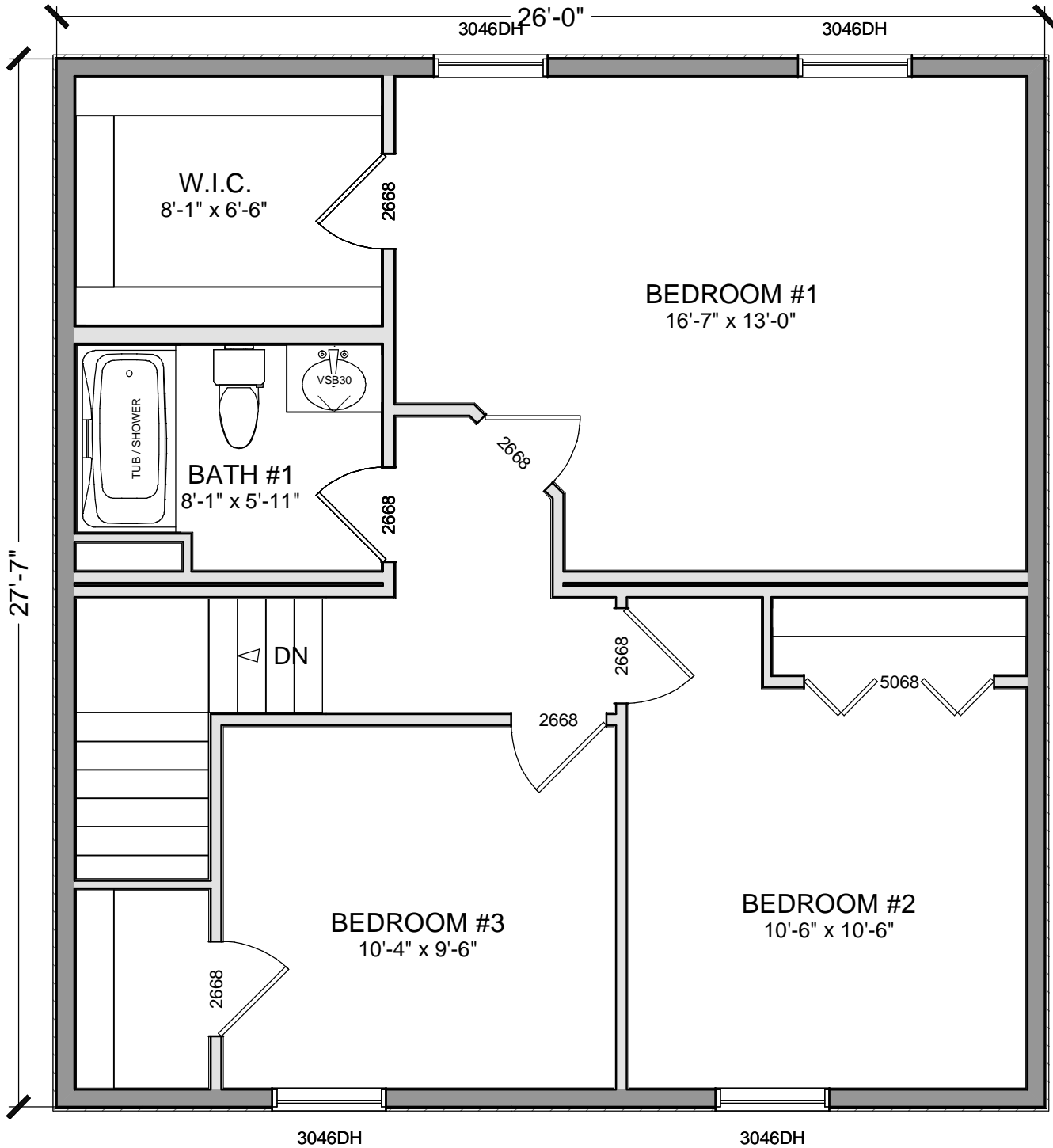


- GENERAL NOTES:
- CEILING HEIGHT: 8' / 8'
 - SNOW LOAD: 2
 - WIND SPEED: 3
 - EXPOSURE: 4
 - SEISMIC: 5
 - R-19 INSULATION OR BETTER TO BE INSTALLED IN FLOOR ON-SITE BY OTHERS
 - FURNACE/BOILER MUST BE ENCLOSED IN FIRE PROTECTED ENCLOSURE IN BASEMENT, ON-SITE BY OTHERS (IF FURNACE/BOILER IS NOT ENCLOSED, OTHERS ARE RESPONSIBLE FOR RELOCATION OF EMERGENCY CUT-OFF SWITCH AS NECESSARY PER STATE AND LOCAL CODE)
 - FURNACE/BOILER SPECIFICATIONS TO BE DETERMINED BY OTHERS FOR MODULAR PORTION BTU OF
 - WATER-HAMMER ARRESTORS TO BE SUPPLIED & INSTALLED ON-SITE BY OTHERS WHERE ALL QUICK-CLOSING VALVES ARE UTILIZED.



SERIAL #	
DRAWING #	CHESHIRE
PRODUCTION BY:	
PROD. DRAWING DATE:	
PRODUCTION CHECKER:	

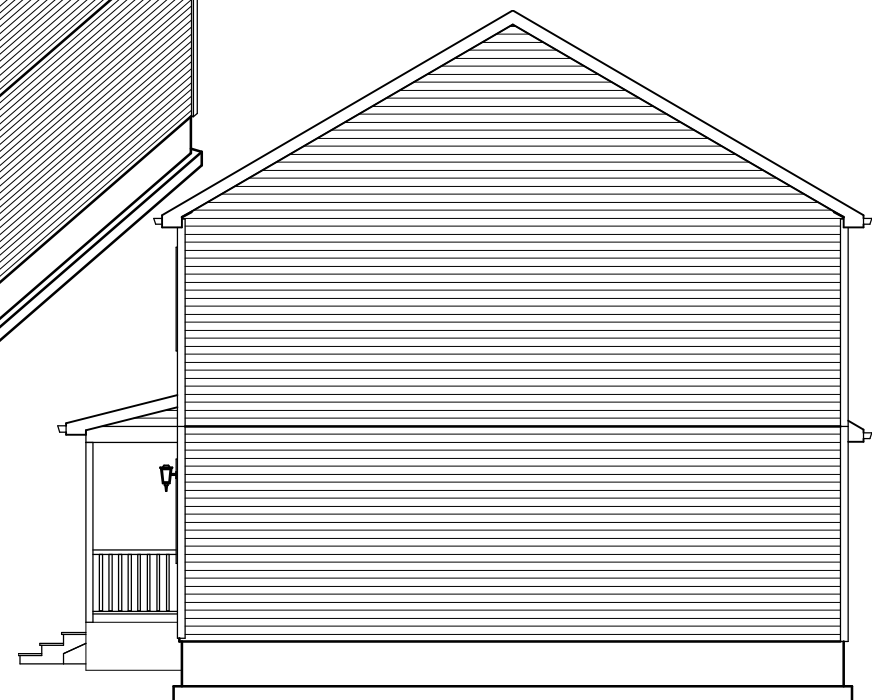
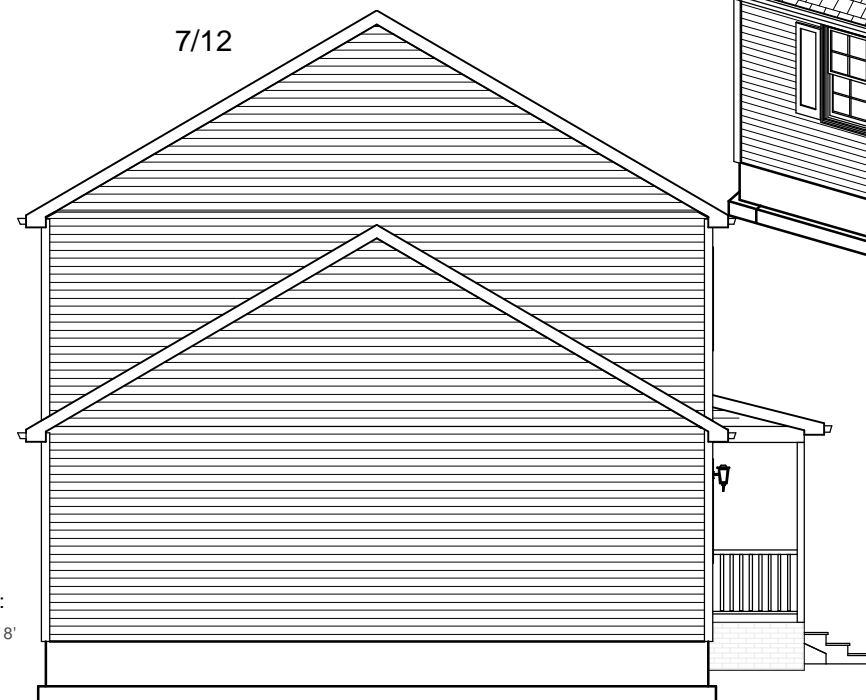
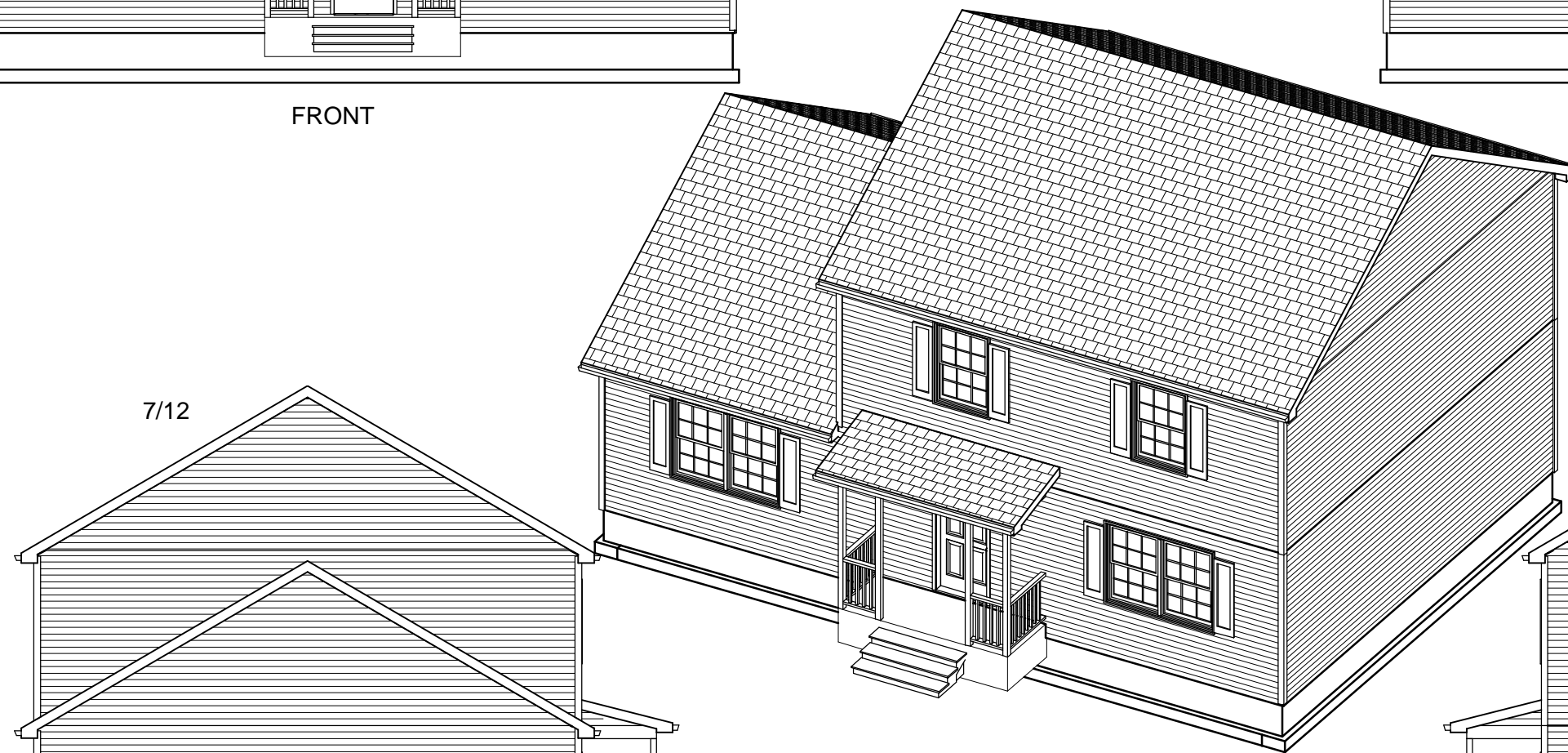
DWG #	DATE	REVISIONS		BY
		NO	REVISION DESCRIPTION	
DRAWN BY:		DATE:		CHECKED BY:
AF		00-00-00		1/4"=1'-0"
		SCALE:		

Design Homes

"The Start Of A New Design"

11 Edwards Drive; Bloomsburg, PA 17815
Phone # 1 (570) 752 - 1001
Fax # 1 (570) 752 - 1013

Address City, State, Zip	Address City, State, Zip	SALES PERSON:	STATE:
BUILDER: CUSTOMER		MODEL: CHESHIRE	
		DRAWING: 2ND FLOOR PLAN	
SHEET:		2	



GENERAL NOTES:

- The diagram shows a side view of a furnace/boiler unit. The unit is a long, rectangular box with a flat top and a slightly raised base. To the right of the unit is a brick chimney structure with a stepped top. The following specifications are listed to the left of the unit:

 - CEILING HEIGHT: 8' / 8'
 - SNOW LOAD: 2
 - WIND SPEED: 3
 - EXPOSURE: 4
 - SEISMIC: 5

Below the unit, the word "LEFT" is written in large, bold, capital letters.

DWG #	DATE	REVISIONS	BY
NO	DATE	REVISION DESCRIPTION	INI

DRAWN BY:	DATE:	SCALE:	CHECKED BY:
AF	00-00-00	1/4"=1'-0"	

Design Homes

"The Start Of A New Design"
11 Edwards Drive; Bloomsburg, PA 17815
Phone # 1 (570) 752 - 1001
Fax # 1 (570) 752 - 1013

ADDRESS City, State, Zip		ADDRESS City, State, Zip	
BUILDER: CUSTOMER		STATE: SALES PERSON:	
MODEL: CHESHIRE			
DRAWING: ELEVATIONS			
SHEET:		3	