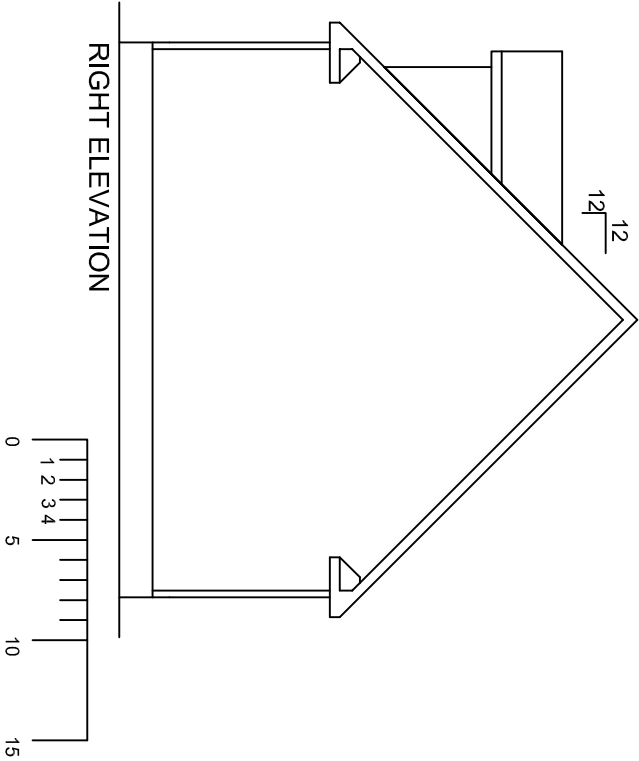
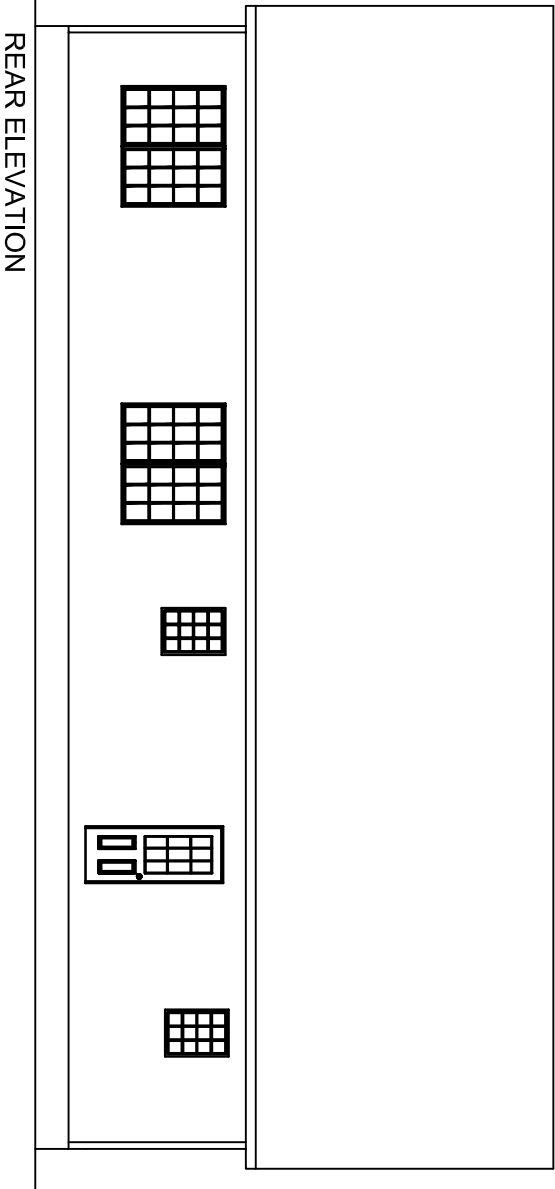


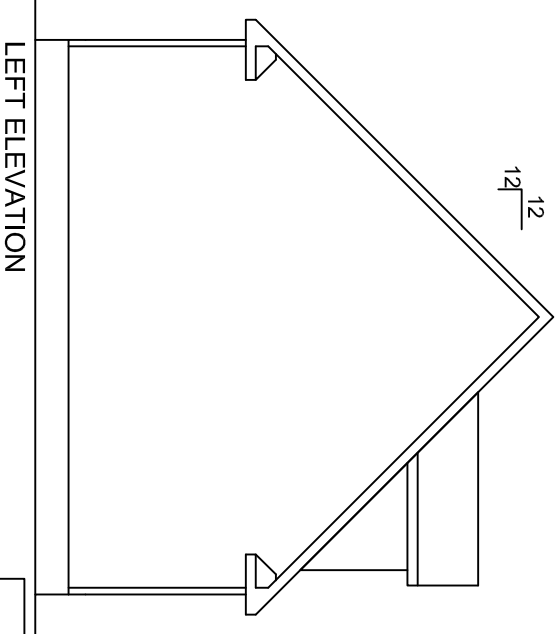
FRONT ELEVATION



RIGHT ELEVATION



REAR ELEVATION

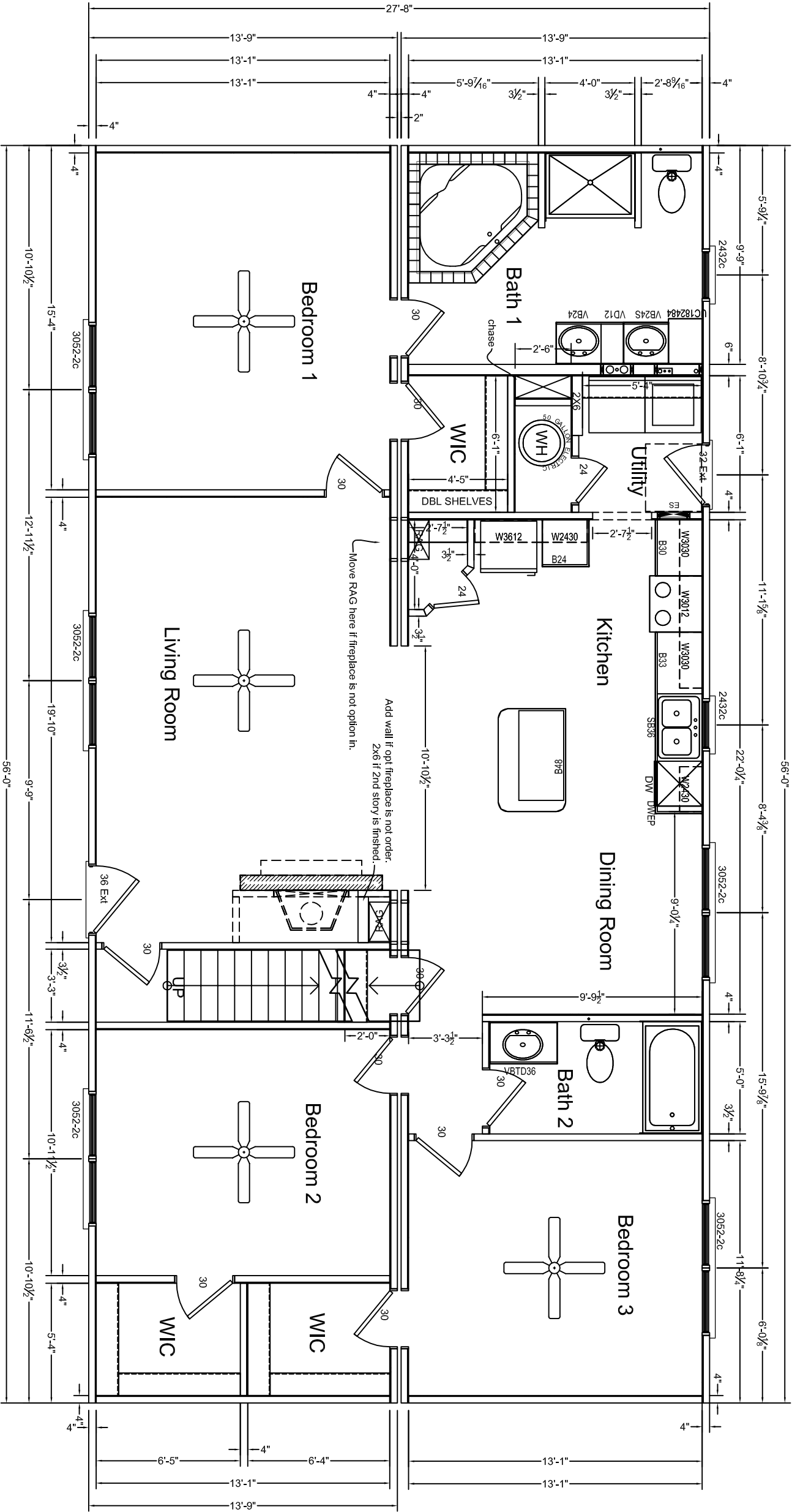


LEFT ELEVATION

3RD PARTY SEAL

NOTES:
1. MATERIALS FOR GABLE ENDS AND OTHER MODULE UNIONS IS SHIPPED LOOSE WITH THE UNITS. IT IS THE RESPONSIBILITY OF THE BUILDER TO INSTALL THESE COMPONENTS PER MANUFACTURERS INSTRUCTIONS
THESE COMPONENTS INCLUDE BUT ARE NOT LIMITED TO SIDING, FASCIA, SOFFIT.
1. MATERIALS TO COMPLETE THE ROOF ASSEMBLY IS PROVIDED BY HCH
AND SHIPPED LOOSE WITH THE UNITS), IT IS THE RESPONSIBILITY OF THE BUILDER TO INSTALL THESE COMPONENTS USING THE FASTENING DETAILS PROVIDED BY HCH. THESE ITEMS INCLUDE BUT ARE NOT LIMITED TO DORMERS, GABLE END WALLS, KNEE WALLS, SHINGLES (FASTENED PER MII).

REVISIONS			<i>HandCrafted Homes</i>			101 Eastern Minerals Road, Henderson, N.C. 27537 Phone: 252-436-0001 Fax: 252-430-6662	
DATE	REVISION	BY					
			MODEL:	Jamestown	BUILDER:	BLDR	FILENAME:
			DRAWN BY:	DRWN	DATE:	11/25/2009	SCALE:
							SERIAL NUMBER:
							PAGE:
							Ext. Elevation
							Sheet 1
							05.1



Total		Sq FT
Story	Base Area	
1st story	1500.00	
2nd story	1500.00	

3RD PARTY SEAL

- NOTES:
1. IT IS THE BUILDERS RESPONSIBILITY TO CONFIRM WITH THE SALES REPRESENTATIVE THAT ALL INFORMATION SHOWN ON THE PLANS HAS BEEN INCLUDED ON THE SALES ORDER. "THE SALES ORDER IS THE FINAL CONTRACT."
 2. PHONE, TV, RECESSED LIGHTS AND ANYOTHER SPECIFIC ITEM ON THE SALES ORDER MUST BE LOCATED ON A SIGNED FLOORPLAN. ITEMS NOT LOCATED IN THIS MANNER WILL BE PLACED UNDER THE DISCRETION OF ENGINEERING.
 3. MATERIALS TO FINISH THE MARRIAGE WALL WILL BE SHIPPED LOOSE INSIDE THE UNIT(S). THE INSTALLATION WILL BE THE RESPONSIBILITY OF THE BUILDER. THESE ITEMS INCLUDE, BUT ARE NOT LIMITED TO DOORS, JAMBS, CASINGS, TRIM, SHEETROCK.

REVISIONS			<i>HandCrafted Homes</i>			SERIAL NUMBER:	PAGE:
DATE	REVISION	BY					
			MODEL:	Jamestown	BUILDER:	BLDR	Floorplan 1
			DRAWN BY:	DRWN	DATE:	11/25/2009	Scale: 1/8" = 1'-0"
							03.1