

Minimum Light and Vent

Room Name	Actual SQ FT	Min. LIGHT	Min. VENT	Light & Vent Provided
Bedroom 1	188.618	15.09 SF	7.54 SF	Met
Bedroom 2	212.77	21.82 SF	10.91 SF	Met
Bedroom 3	245.391	19.63 SF	9.82 SF	Met
Dining Room	164.632	3.17 SF	6.39 SF	Met
Great Room	225.688	18.06 SF	9.03 SF	Met

Total SQ FT

Story	Base Area
1st story	1217.333
2nd story	998.764
Total	2216.097

NOTES:

1. IT IS THE BUILDERS RESPONSIBILITY TO CONFIRM WITH THE SALES REPRESENTATIVE THAT ALL INFORMATION SHOWN ON THE PLANS HAS BEEN INCLUDED ON THE SALES ORDER. *THE SALES ORDER IS THE FINAL CONTRACT.*
2. PHONE, TV, RECESSED LIGHTS AND ANY OTHER SPECIFIC ITEM ON THE SALES ORDER MUST BE LOCATED ON A SIGNED FLOORPLAN.
3. MATERIALS TO FINISH THE MARRIAGE WALL WILL BE SHIPPED LOOSE INSIDE THE UNIT(S). THE INSTALLATION WILL BE THE RESPONSIBILITY OF THE BUILDER. THESE ITEMS INCLUDE, BUT ARE NOT LIMITED TO DOORS, JAMBS, CASINGS, TRIM, SHEETROCK.

REVISIONS

DATE	REVISION	BY

HandCrafted Homes

MODEL: CONCORD
 DRAWN BY: DRWN

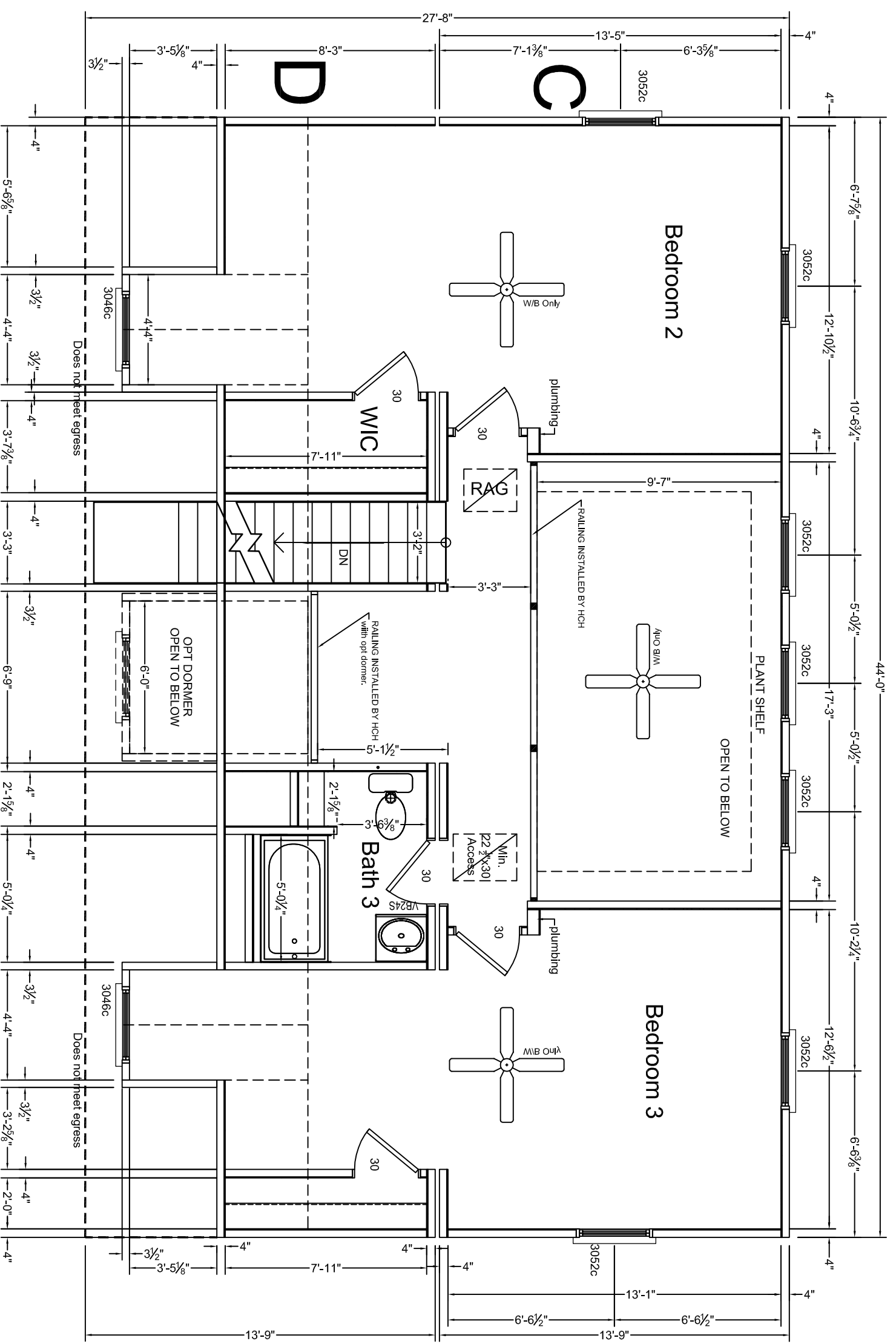
101 Eastern Minerals Road, Henderson, N.C. 27537
 Phone: 252-436-0001 Fax: 252-430-6662

SERIAL NUMBER: SN

PAGE: Floorplan 1
 Sheet 1

03.1

3RD PARTY SEAL



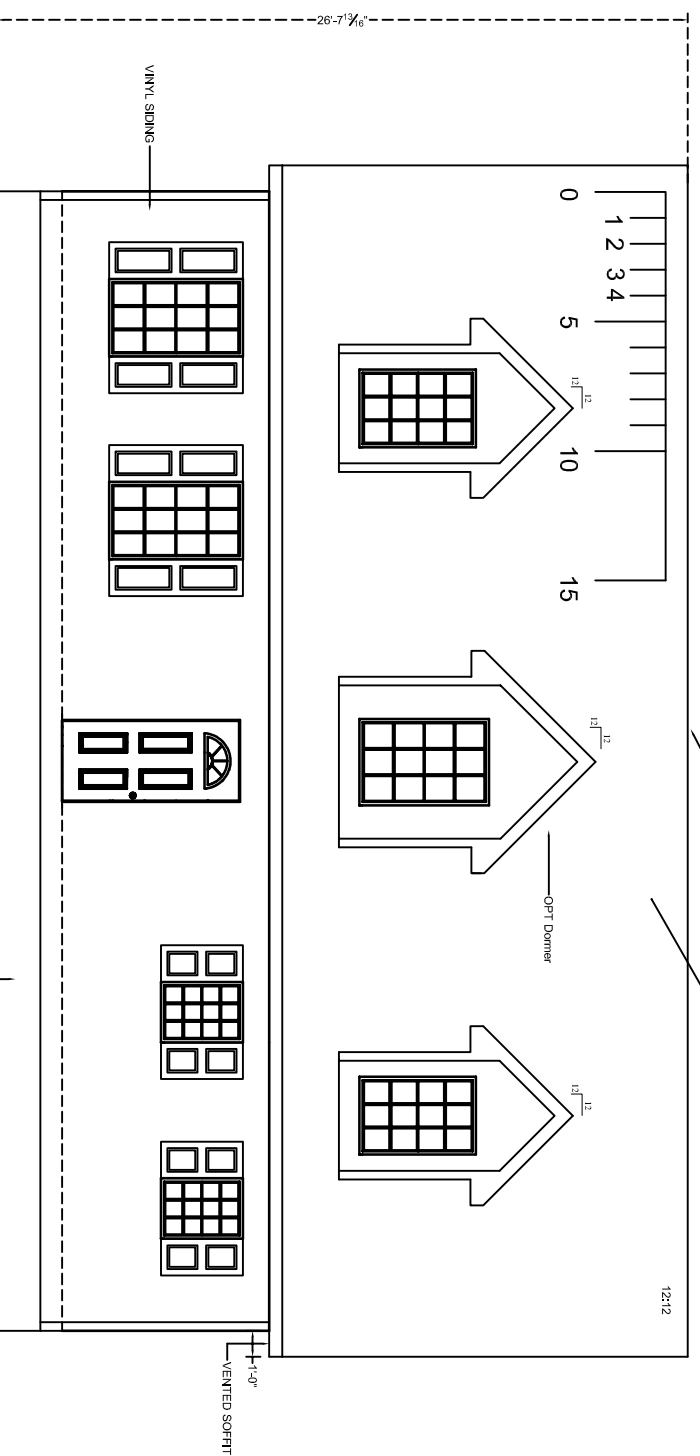
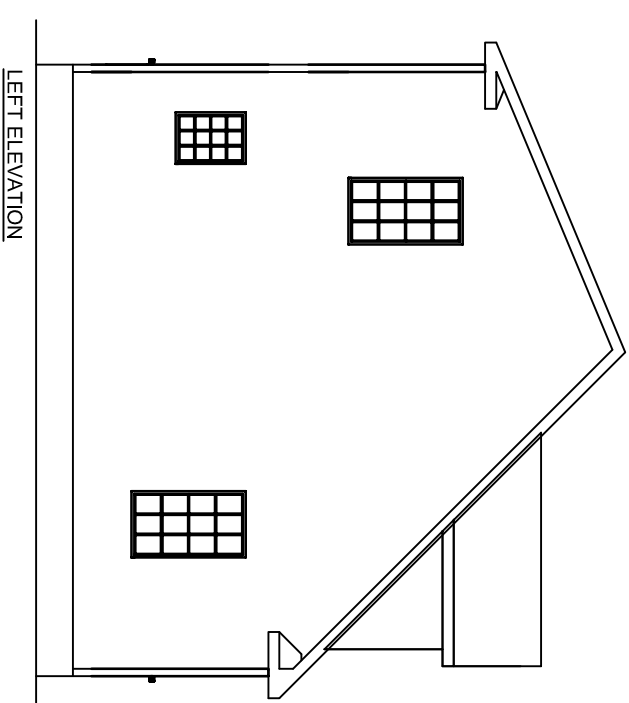
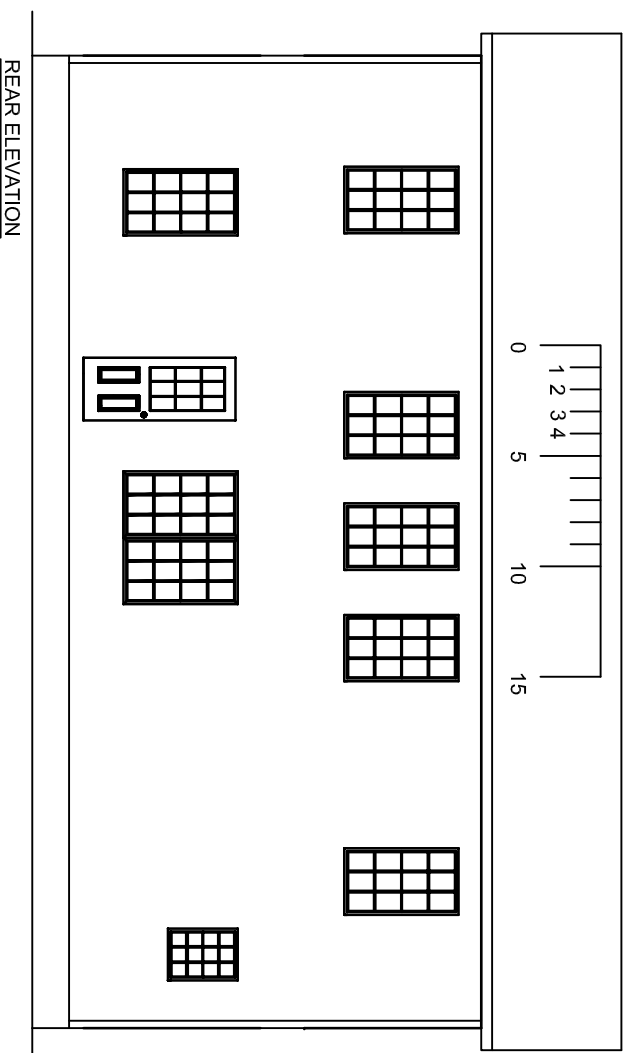
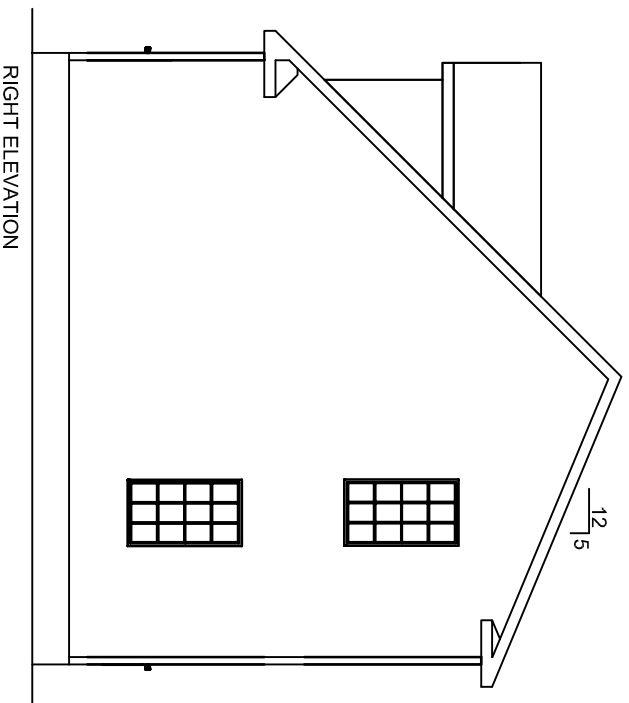
3RD PARTY SEAL

NOTES:
 1. IT IS THE BUILDER'S RESPONSIBILITY TO CONFIRM WITH THE SALES REPRESENTATIVE THAT ALL INFORMATION SHOWN ON THE PLANS HAS BEEN INCLUDED ON THE SALES ORDER. "THE SALES ORDER IS THE FINAL CONTRACT."
 2. PHONE, TV, RECESSED LIGHTS AND ANY OTHER SPECIFIC ITEM ON THE SALES ORDER MUST BE LOCATED ON A SIGNED FLOOR PLAN. ITEMS NOT LOCATED IN THIS MANNER WILL BE PLACED UNDER THE DISCRETION OF ENGINEERING.
 3. MATERIALS TO FINISH THE MARRIAGE WALL WILL BE SHIPPED LOOSE INSIDE THE UNIT(S). THE INSTALLATION WILL BE THE RESPONSIBILITY OF THE BUILDER. THESE ITEMS INCLUDE, BUT ARE NOT LIMITED TO DOORS, JAMBS, CASINGS, TRIM, SHEETROCK.

REVISIONS		HandCrafted Homes	
DATE	REVISION	BY	MODEL:
			CONCORD
			CONCORD-07
			SCALE:

BUILDER:	BLDR	DATE:	2009
DRAWN BY:	DRWN		

101 Eastern Minerals Road, Henderson, N.C. 27537	SERIAL NUMBER:	SN
Phone: 252-436-0001 Fax: 252-430-6662		
PAGE:	Floorplan 2	03.2
	Sheet 2	



NOTES:
 1. MATERIALS FOR GABLE ENDS AND OTHER MODULE UNIONS IS SHIPPED LOOSE WITH THE UNITS. IT IS THE RESPONSIBILITY OF THE BUILDER TO INSTALL THESE COMPONENTS PER MANUFACTURERS INSTRUCTIONS. THESE COMPONENTS INCLUDE BUT ARE NOT LIMITED TO SIDING, FASCIA, SOFFIT.
 1. MATERIALS TO COMPLETE THE ROOF ASSEMBLY IS PROVIDED BY HCH AND SHIPPED LOOSE WITH THE UNITS(S). IT IS THE RESPONSIBILITY OF THE BUILDER TO INSTALL THESE COMPONENTS USING THE FASTENING DETAILS PROVIDED BY HCH. THESE ITEMS INCLUDE BUT ARE NOT LIMITED TO DORMERS, GABLE END WALLS, KNEE WALLS, SHINGLES (FASTENED PER MII),

REVISIONS	
DATE	REVISION

BY	MODEL:	HandCrafted Homes	BUILDER:	FILENAME:
	CONCORD		BLDR	Concord-07
			DATE:	SCALE:
			2009	

101 Eastern Minerals Road, Henderson, N.C. 27537
 Phone: 252-436-0001 Fax: 252-430-6662

SERIAL NUMBER: **SN**

PAGE: **Ext. Elevation**
 Sheet 1 **05.1**

3RD PARTY SEAL