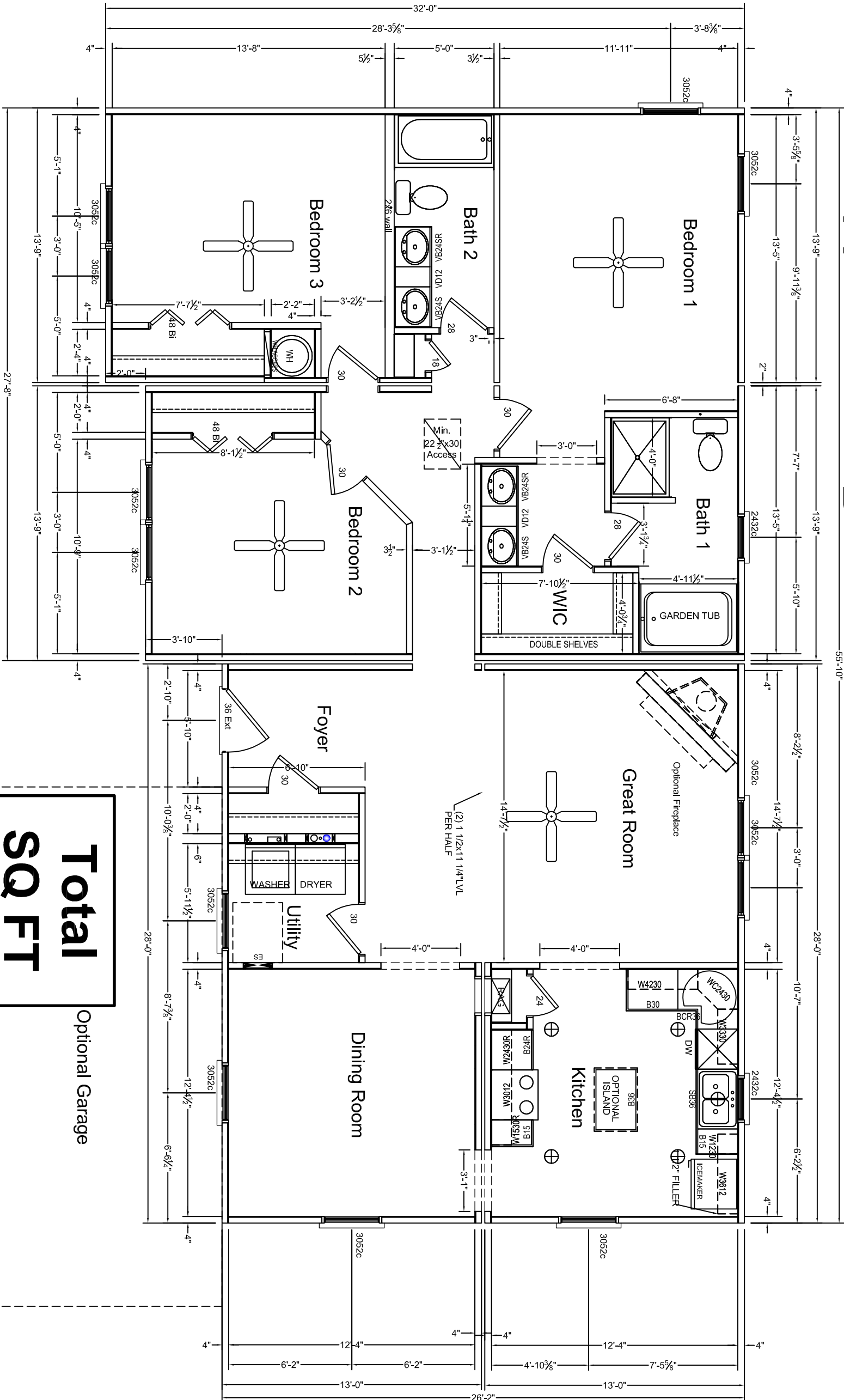


A
B

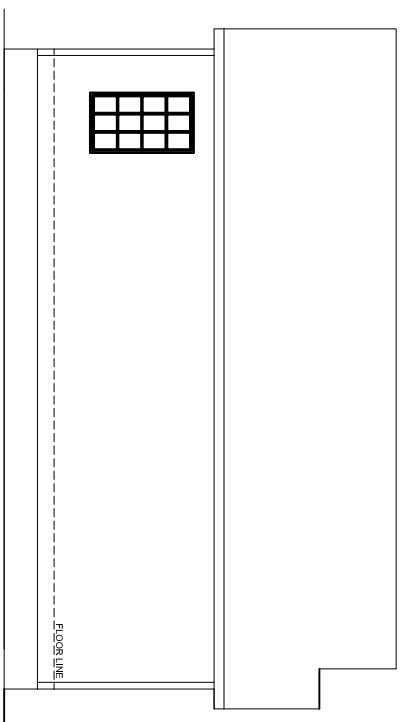
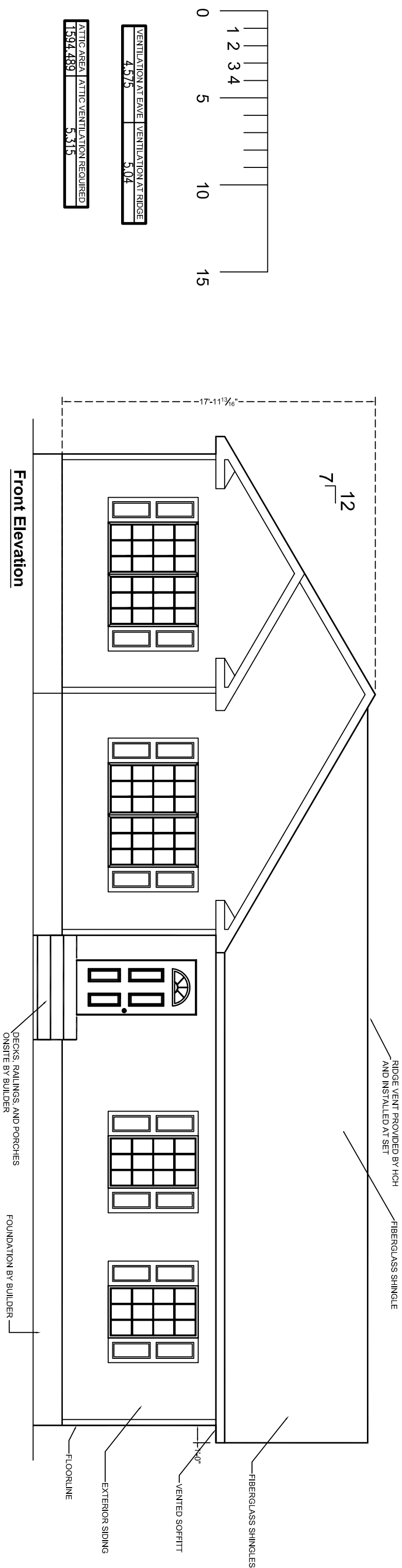


4 MODULES 3 LINE MOVES

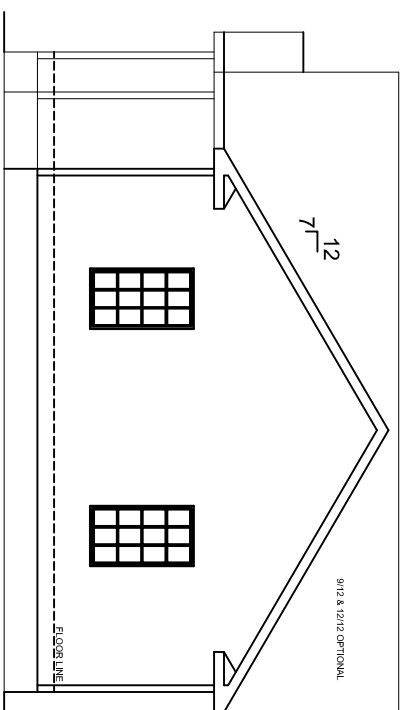
- NOTES:
1. IT IS THE BUILDERS RESPONSIBILITY TO CONFIRM WITH THE SALES REPRESENTATIVE THAT ALL INFORMATION SHOWN ON THE PLANS HAS BEEN INCLUDED ON THE SALES ORDER. "THE SALES ORDER IS THE FINAL CONTRACT."
 2. PHONE, TV, RECESSED LIGHTS AND ANYOTHER SPECIFIC ITEM ON THE SALES ORDER MUST BE LOCATED ON A SIGNED FLOORPLAN. ITEMS NOT LOCATED IN THIS MANNER WILL BE PLACED UNDER THE DISCRETION OF ENGINEERING.
 3. MATERIALS TO FINISH THE MARRIAGE WALL WILL BE SHIPPED LOOSE INSIDE THE UNIT(S). THE INSTALLATION WILL BE THE RESPONSIBILITY OF THE BUILDER. THESE ITEMS INCLUDE, BUT ARE NOT LIMITED TO DOORS, JAMBS, CASINGS, TRIM, SHEETROCK.

REVISIONS			HandCrafted Homes		
DATE	REVISION	BY	MODEL:	BUILDER:	FILENAME:
			LOUISBURG	BLDR	P-
			DRAWN BY:	DATE:	SCALE:
			DRWN	07	
			101 Eastern Minerals Road, Henderson, N.C. 27537 Phone: 252-436-0001 Fax: 252-430-6662		
			SERIAL NUMBER: SN		
			PAGE: Floorplan 1		
			Sheet 1		
			03.1		

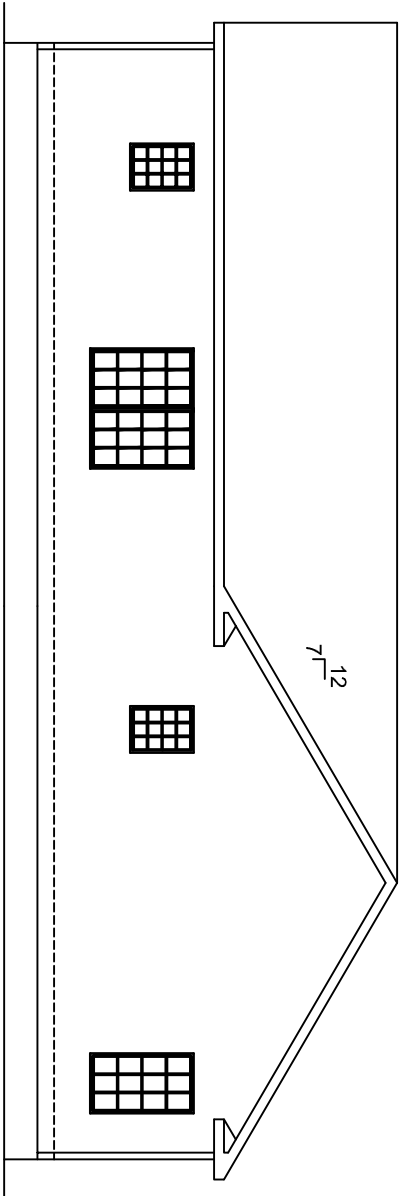
Total		Optional Garage
SQ FT		
Story	Base Area	
1st story	1594.489	
	1594.489	



Left Elevation



Right Elevation



Rear Elevation

NOTES:

1. MATERIALS FOR GABLE ENDS AND OTHER MODULE UNIONS IS SHIPPED LOOSE WITH THE UNITS. IT IS THE RESPONSIBILITY OF THE BUILDER TO INSTALL THESE COMPONENTS PER MANUFACTURERS INSTRUCTIONS. THESE COMPONENTS INCLUDE BUT ARE NOT LIMITED TO SIDING, FASCIA, SOFFIT.

1. MATERIALS TO COMPLETE THE ROOF ASSEMBLY IS PROVIDED BY HCH AND SHIPPED LOOSE WITH THE UNITS. IT IS THE RESPONSIBILITY OF THE BUILDER TO INSTALL THESE COMPONENTS USING THE FASTENING DETAILS PROVIDED BY HCH. THESE ITEMS INCLUDE BUT ARE NOT LIMITED TO DORMERS, GABLE END WALLS, KNEE WALLS, SHINGLES (FASTENED PER MUI).

REVISIONS			<div>101 Eastern Minerals Road, Henderson, N.C. 27537 Phone: 252-436-0001 Fax: 252-430-6662</div> <div>HandCrafted Homes</div>				
DATE	REVISION	BY					
MODEL:		BUILDER:	FILENAME:		SERIAL NUMBER:	PAGE:	
LOUISBURG		BLDR	P-				
DRAWN BY:		DATE:	SCALE:				
DRWN		-07					
SN						Ext. Elevation Sheet 1	05.1