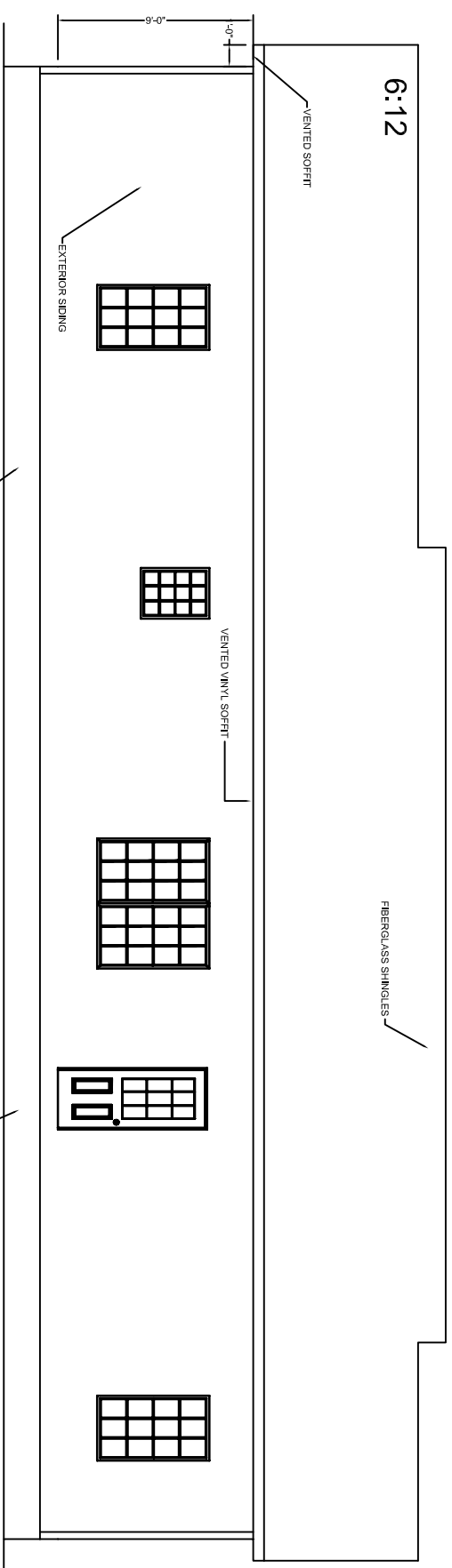
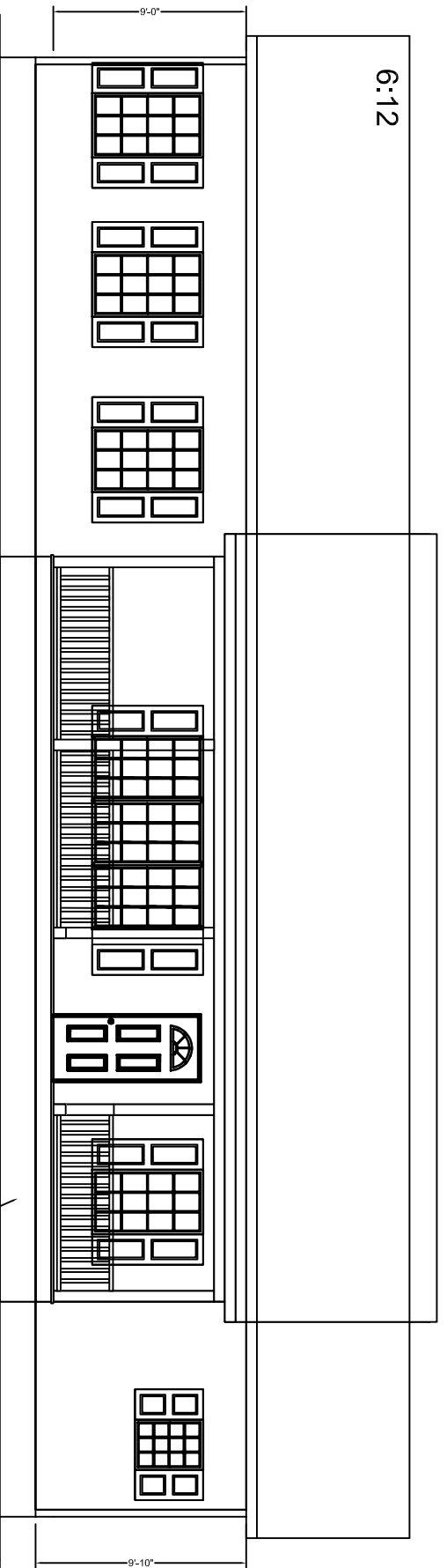


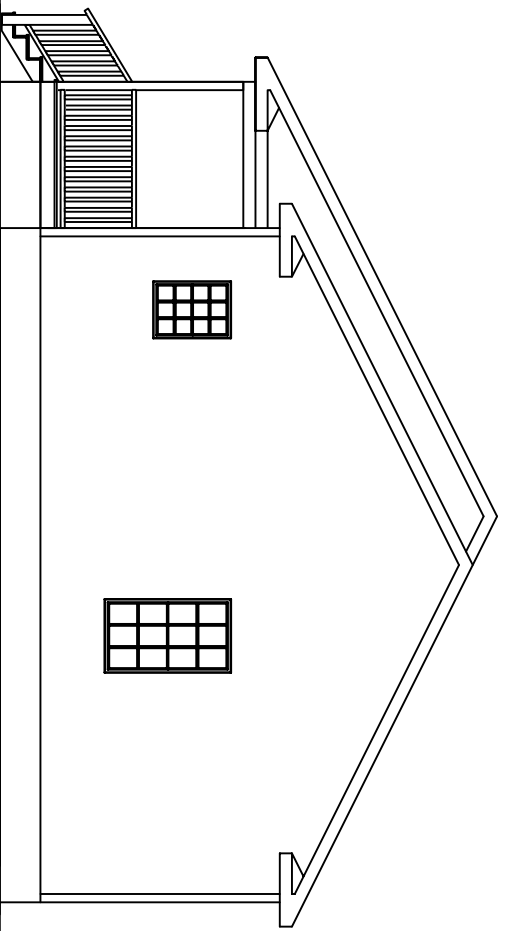
LEFT ELEVATION



REAR ELEVATION



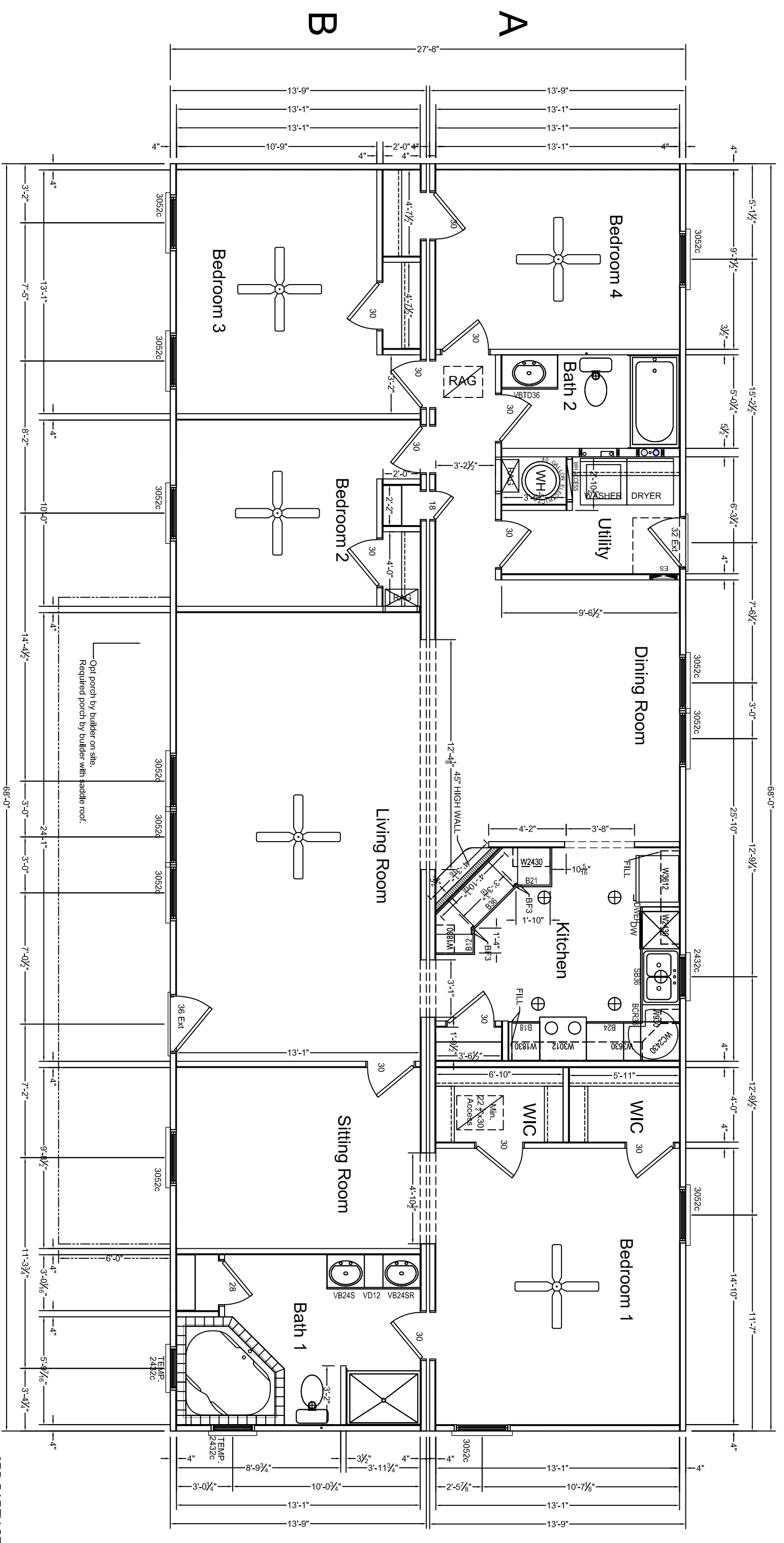
FRONT ELEVATION



RIGHT ELEVATION

Optional Saddle Roof

REVISIONS		BY	MODEL:	BUILDER:	FILENAME:	101 Eastern Minerals Road, Henderson, N.C. 27537
DATE	REVISION		Goldsboro 2008	BLDR	P.	Phone: 252-436-0001 Fax: 252-430-6662
			DRAWN BY:	DATE:	SCALE:	SERIAL NUMBER:
			DRWN	-08	1/8" = 1'-0"	PAGE:
					SN	



Total
SQ FT

Story	Base Area
1st story	1881.333
	1881.333

0	1	2	3	4	5	10	15
---	---	---	---	---	---	----	----

2 MODULES 2 LINE MOVES

3RD PARTY SEAL

NOTES:
 1. IT IS THE BUILDERS RESPONSIBILITY TO CONFIRM WITH THE SALES REPRESENTATIVE THAT ALL INFORMATION SHOWN ON THE PLANS HAS BEEN INCLUDED ON THE SALES ORDER. *THE SALES ORDER IS THE FINAL CONTRACT.*
 2. PHONE, TV, RECESSED LIGHTS AND ANY OTHER SPECIFIC ITEM ON THE SALES ORDER MUST BE LOCATED ON A SIGNED FLOORPLAN. ITEMS NOT LOCATED IN THIS MANNER WILL BE PLACED UNDER THE DISCRETION OF ENGINEERING.
 3. MATERIALS TO FINISH THE MARRIAGE WALL WILL BE SHIPPED LOOSE INSIDE THE UNIT(S). THE INSTALLATION WILL BE THE RESPONSIBILITY OF THE BUILDER. THESE ITEMS INCLUDE, BUT ARE NOT LIMITED TO DOORS, JAMBS, CASINGS, TRIM, SHEETROCK.

REVISIONS		BY	MODEL:	BUILDER:	FILENAME:	SERIAL NUMBER:
DATE	REVISION		Goldsboro	BLDR	Goldsboro-2008 version	101 Eastern Minerals Road, Henderson, N.C. 27537 Phone: 252-436-0001 Fax: 252-430-6662
			DRAWN BY:	DATE:	SCALE:	
			DRWN	2009		

HandCrafted Homes

101 Eastern Minerals Road, Henderson, N.C. 27537
 Phone: 252-436-0001 Fax: 252-430-6662

PAGE: Floorplan 1
 SHEET: Sheet 1

03.1