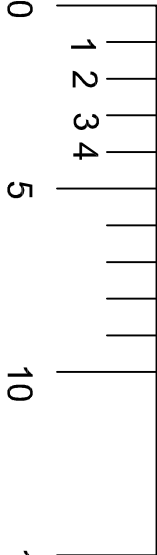


* 2nd RAG required for NC.

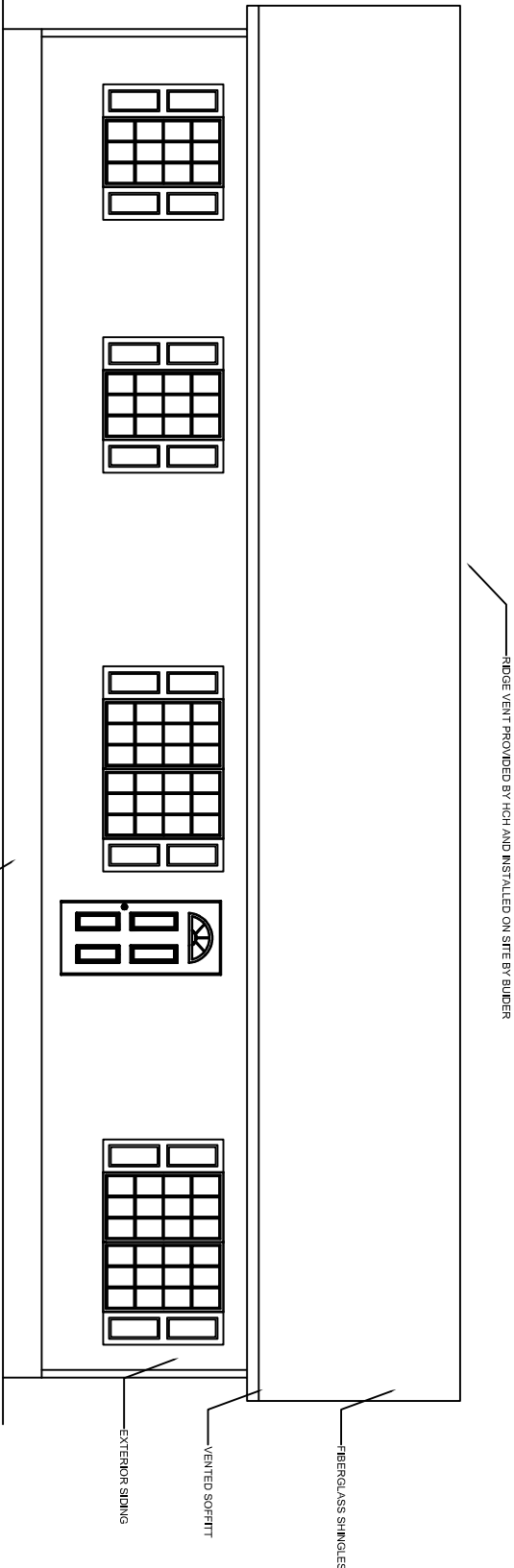
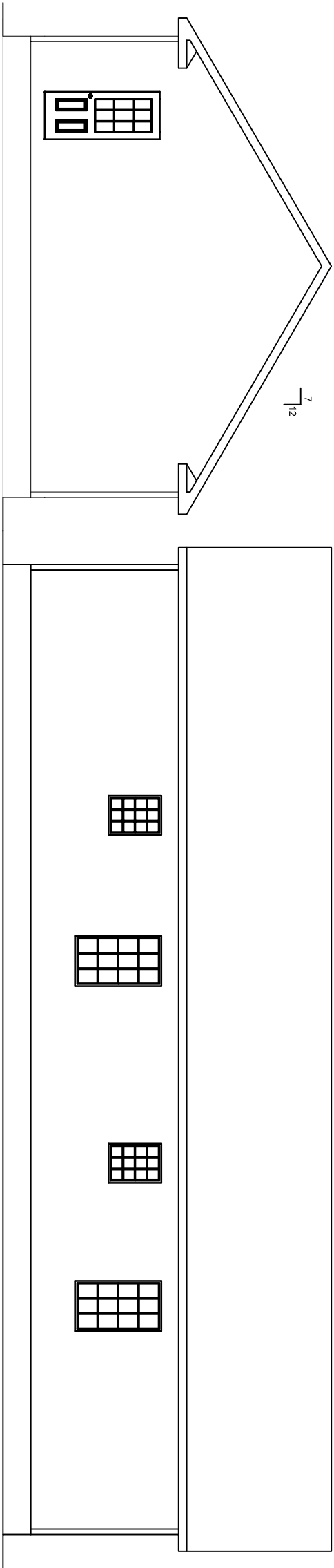


Total	
SQ FT	
Story	Base Area
1st story	1604.667
	1604.667

3RD PARTY SEAL

- NOTES:
1. IT IS THE BUILDERS RESPONSIBILITY TO CONFIRM WITH THE SALES REPRESENTATIVE THAT ALL INFORMATION SHOWN ON THE PLANS HAS BEEN INCLUDED ON THE SALES ORDER. "THE SALES ORDER IS THE FINAL CONTRACT."
 2. PHONE, TV, RECESSED LIGHTS AND ANYOTHER SPECIFIC ITEM ON THE SALES ORDER MUST BE LOCATED ON A SIGNED FLOORPLAN. ITEMS NOT LOCATED IN THIS MANNER WILL BE PLACED UNDER THE DISCRETION OF ENGINEERING.
 3. MATERIALS TO FINISH THE MARRIAGE WALL WILL BE SHIPPED LOOSE INSIDE THE UNIT(S). THE INSTALLATION WILL BE THE RESPONSIBILITY OF THE BUILDER. THESE ITEMS INCLUDE, BUT ARE NOT LIMITED TO DOORS, JAMBS, CASINGS, TRIM, SHEETROCK.

REVISIONS			HandCrafted Homes			101 Eastern Minerals Road, Henderson, N.C. 27537	
DATE	REVISION	BY	MODEL:	BUILDER:	FILENAME:	SERIAL NUMBER:	
			Caldwell	BLDR	Caldwell-07	PHONE: 252-436-0001 FAX: 252-430-6662	
			DRAWN BY:	DATE:	SCALE:	PAGE:	
			DRWN	2009		Floorplan 1	
						03.1	
						Sheet 1	



FRONT ELEVATION

RIGHT ELEVATION

NOTES:
1. MATERIALS FOR GABLE ENDS AND OTHER MODULE UNIONS IS SHIPPED LOOSE WITH THE UNITS. IT IS THE RESPONSIBILITY OF THE BUILDER TO ORDER AND INSTALL THE NECESSARY MATERIALS TO COMPLETE THESE COMPONENTS INCLUDE BUT ARE NOT LIMITED TO SIDING, FLASH, SOFFIT, AND SHIPPED LOOSE WITH THE UNITS). IT IS THE RESPONSIBILITY OF THE BUILDER TO ORDER AND INSTALL THE NECESSARY MATERIALS TO COMPLETE THESE COMPONENTS INCLUDE BUT ARE NOT LIMITED TO DOWNERS, PROVIDED BY HCH. THESE ITEMS INCLUDE BUT ARE NOT LIMITED TO DOWNERS, GABLE END WALLS, KNEE WALLS, SHINGLES (FASTENED PER MI).

REVISIONS							
DATE	REVISION	BY	MODEL:	BUILDER:	FILENAME:	SERIAL NUMBER:	PAGE:
			Caldwell	BLDR	P-	101 Eastern Minerals Road, Henderson, N.C. 27537	
			DRAWN BY:	DATE:	SCALE:		
			DRWN	-08	1/8" = 1'-0"	SN	EXT ELEV SHEET 1
							05.1