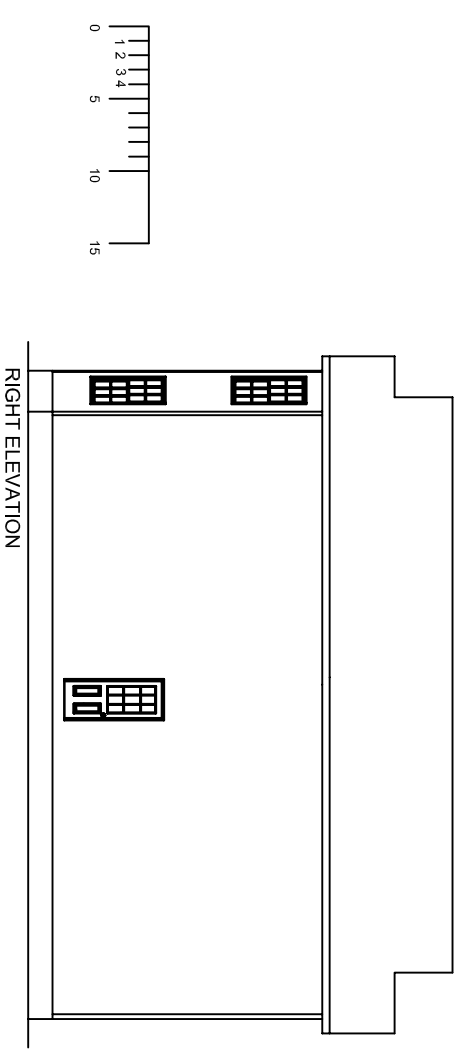
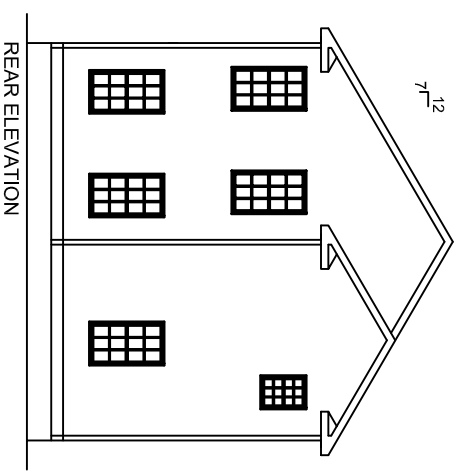


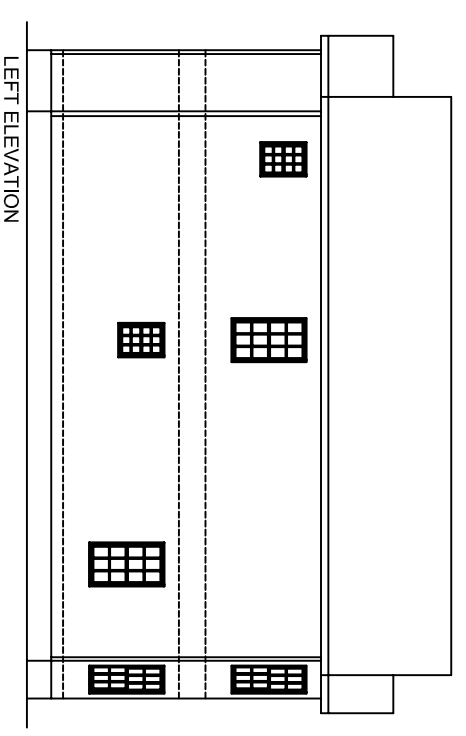
Front Elevation



RIGHT ELEVATION



REAR ELEVATION

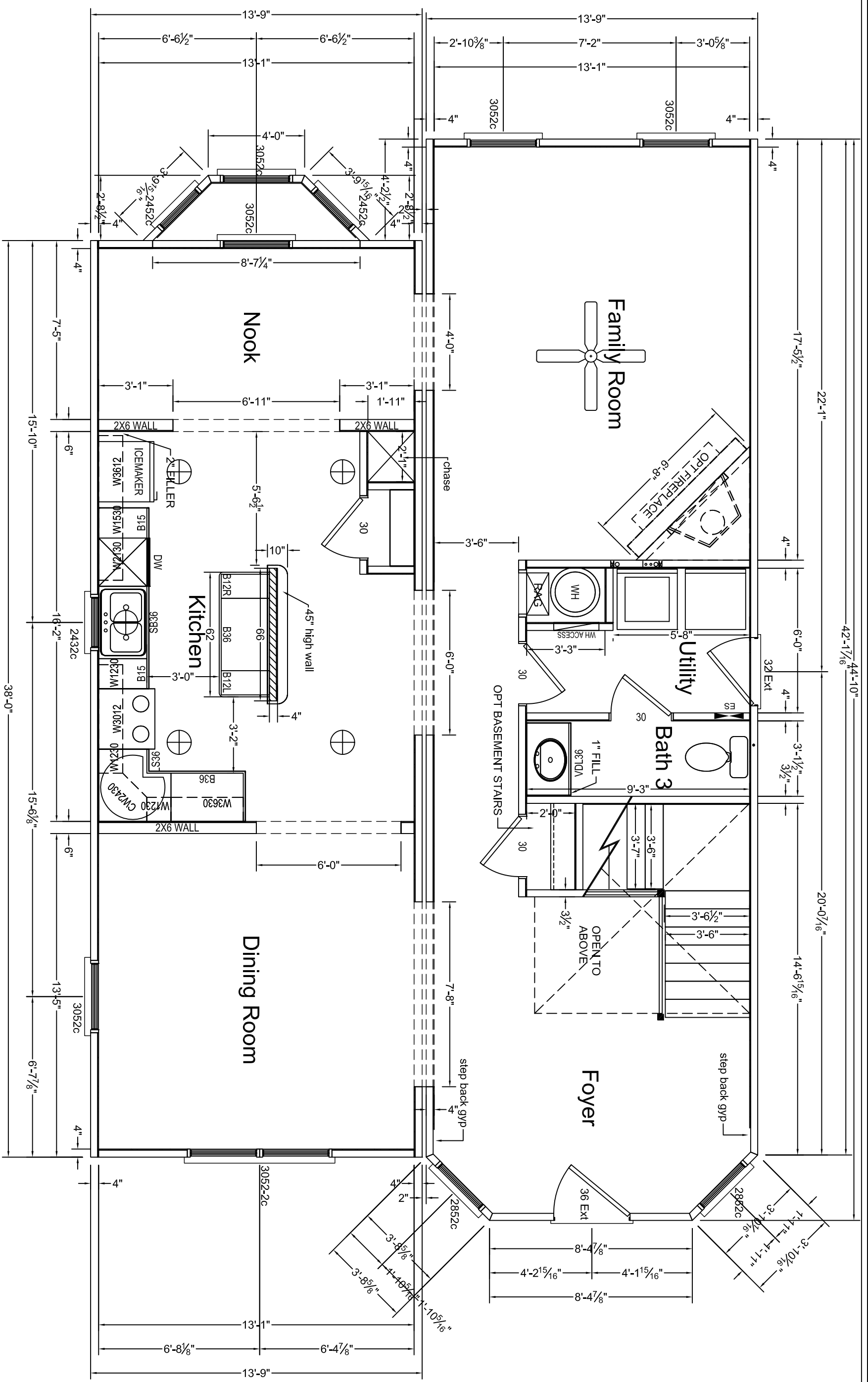


LEFT ELEVATION

3RD PARTY SEAL

NOTES:
 1. MATERIALS FOR GABLE ENDS AND OTHER MODULE UNIONS IS SHIPPED LOOSE WITH THE UNITS. IT IS THE RESPONSIBILITY OF THE BUILDER TO INSTALL THESE COMPONENTS PER MANUFACTURERS INSTRUCTIONS
 THESE COMPONENTS INCLUDE BUT ARE NOT LIMITED TO SIDING, FASCIA, SOFFIT.
 1. MATERIALS TO COMPLETE THE ROOF ASSEMBLY IS PROVIDED BY HCH AND SHIPPED LOOSE WITH THE UNITS), IT IS THE RESPONSIBILITY OF THE BUILDER TO INSTALL THESE COMPONENTS USING THE FASTENING DETAILS PROVIDED BY HCH. THESE ITEMS INCLUDE BUT ARE NOT LIMITED TO DORMERS, GABLE END WALLS, KNEE WALLS, SHINGLES (FASTENED PER MII).

REVISIONS		BY		MODEL:		BUILDER:		FILENAME:		SERIAL NUMBER:		PAGE:	
DATE	REVISION			Boone	BLDR	Boone-07		101 Eastern Minerals Road, Henderson, N.C. 27537		Ext. Elevation			05.1
				Boone	BLDR	Boone-07		Phone: 252-436-0001 Fax: 252-430-6662		Sheet 1			
				DRWN	DRWN	DRWN	DATE: 2009						



NOTES:
 1. IT IS THE BUILDER'S RESPONSIBILITY TO CONFIRM WITH THE SALES REPRESENTATIVE THAT ALL INFORMATION SHOWN ON THE PLANS HAS BEEN INCLUDED ON THE SALES ORDER. THE SALES ORDER IS THE FINAL CONTRACT.
 2. PHONE, TV, RECESSED LIGHTS AND ANY OTHER SPECIFIC ITEM ON THE SALES ORDER MUST BE LOCATED ON A SIGNED FLOORPLAN. ITEMS NOT LOCATED IN THIS MANNER WILL BE PLACED UNDER THE DISCRETION OF ENGINEERING.
 3. MATERIALS TO FINISH THE MARRIAGE WALL WILL BE SHIPPED LOOSE INSIDE THE UNIT(S). THE INSTALLATION WILL BE THE RESPONSIBILITY OF THE BUILDER. THESE ITEMS INCLUDE, BUT ARE NOT LIMITED TO DOORS, JAMBS, CASINGS, TRIM, SHEETROCK.

REVISIONS	BY	DATE
1		
2		
3		
4		
5		

REVISIONS	BY	DATE
10		
15		

HandCrafted Homes	101 Eastern Minerals Road, Henderson, N.C. 27537
MODEL: BOONE	BUILDER: BLDR
DATE: -07	SCALE: 1/4" = 1'-0"
DRAWN BY: DRWN	SERIAL NUMBER: SN
	PAGE:

