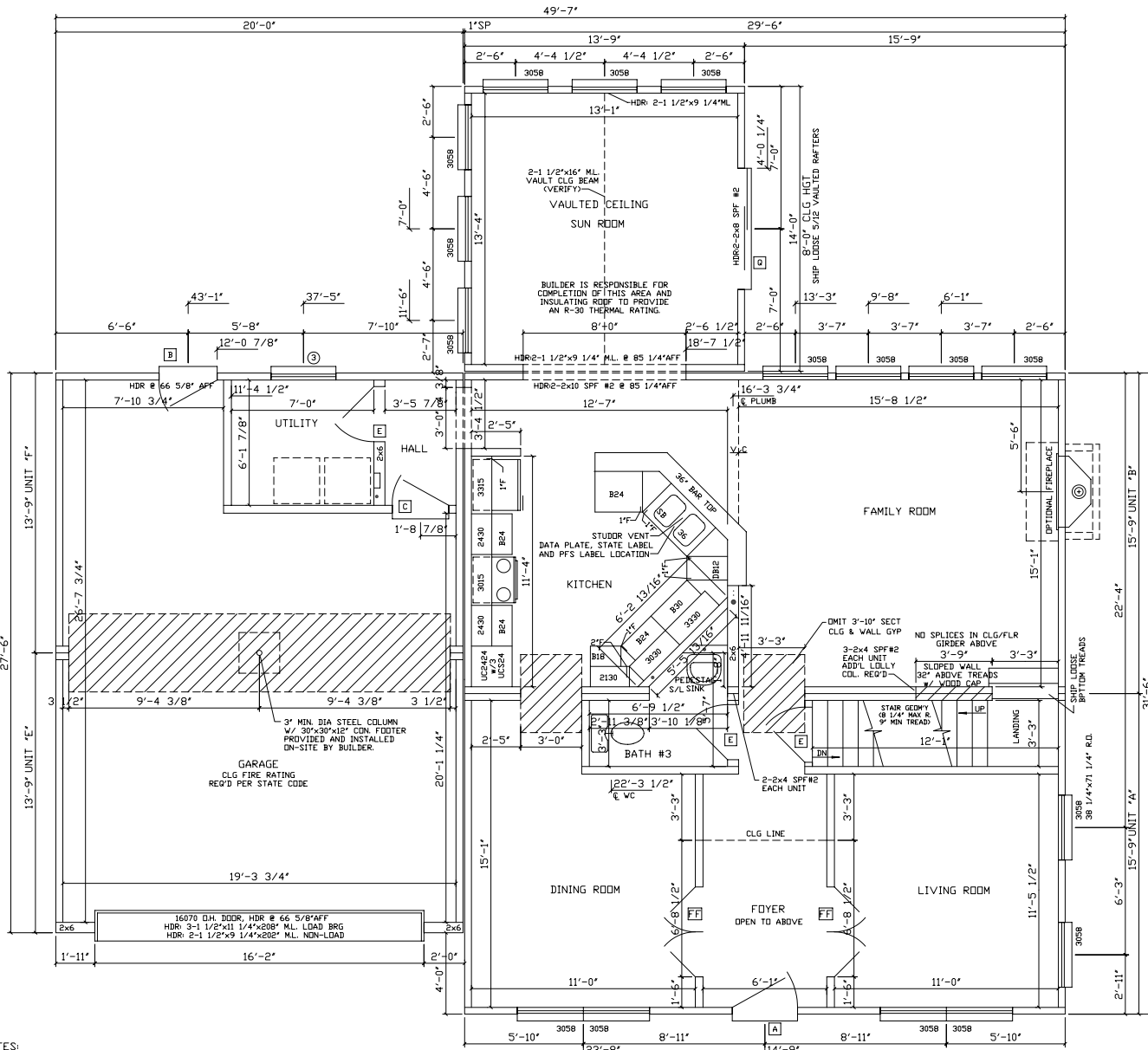


SOMERSET 1A			
WINDOWS	EXT. DOORS	INT. DOORS	KIT. CABIN.
(6) - #3	(1) - STD. 'A'	(15) - PASSAGE	16.25 FT - WALL CAB
(2) - #1 S.G.	(1) - STD. 'B' w/GRILL	(1) - SGL BIFOLD	16.00 FT - BASE CAB
(16) - 3058	(1) - S.G.D.	(1) - SLIDER	UC242484 w/SHELVES
1-A21	(1) - STD. 'C'	(1) - POCKET DOOR ASSEMBLY	

X

SN- /QN-?/X



NOTES:

- 2x4 SPF#2 EXTERIOR WALLS @ 12" O.C. (HOUSE ONLY)
- 2x4 MARRIAGE WALLS @ 16" O.C.
- 9'-0" CLG HT. (UNIT 'A' & 'B')
- 8'-0" CLG HT. (GARAGE AND SUN ROOM)
- 2x10 SPF#2 FLOOR JOISTS @ 16" O.C. w/ JOIST HANGERS
- ROOF SYSTEM TO BE 16" O.C.
- 7'-0" SINGLE HUNG WINDOWS (#1=24210, #2=2842, #3=3048, #4=2852, #11=2558C)
- CLG BEAM OVER GARAGE TO BE: 4-1 1/2"x9 1/4"x20'-0" M.L.
- CEILING DRYWALL WILL BE OMITTED FOR ALL ON-SITE PLUMBING CONNECTIONS

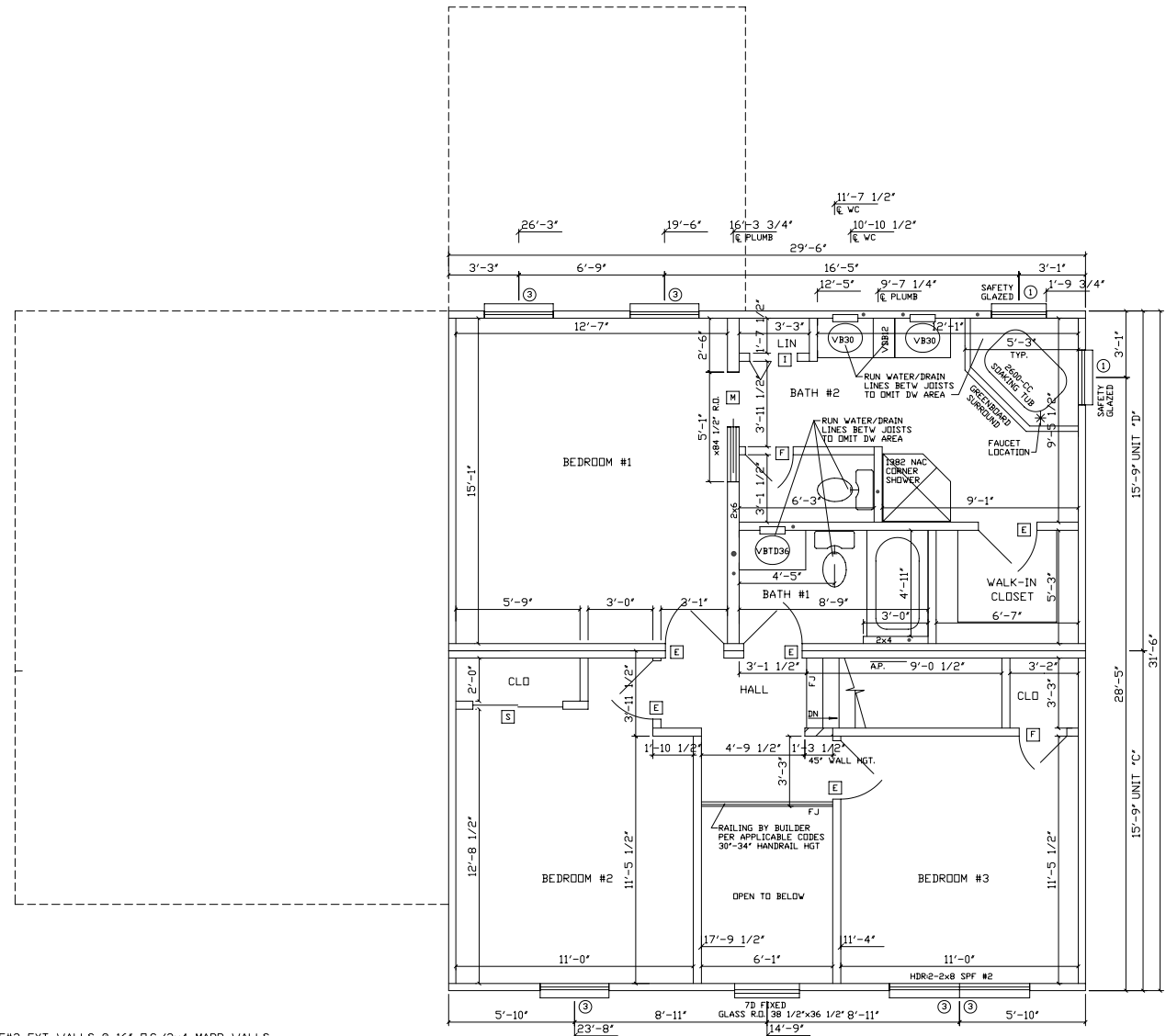
excel
Home
 FROM THE INSIDE

R.R.#2 BOX 683
 LIVERPOOL, PA 17045
 (717) 444-3395
 FAX (717) 444-7577
 WWW.EXCELHOMES.COM


316 296 SOMERSET 1A
 w/276 20 GARAGE & ADDITION
 1ST STORY

DRAWN BY:	CHECKED BY:	DATE:	SCALE: 1/4"=1'-0"
REVISIONS/REV. STD 10-31-01			DISK NO. STD

01/14/02 08:24



- NOTES:
1. 2x4, SPF#2 EXT WALLS @ 16' O.C./2x4 MARR WALLS
 2. 8'-0" CLG. HT.
 3. 2x10 SPF#2 FLOOR JOISTS @ 16' O.C. w/ JOIST HANGERS
 4. ROOF SYSTEM TO BE 24' O.C.
 5. 7-D SINGLE HUNG WINDOWS (#1=24210, #2=2842, #3=3048, #4=2852, #11=2558C)

		R.R.#2 BOX 683 LIVERPOOL, PA 17045 (717) 444-3395 FAX (717) 444-7577 FROM THE INSIDE WWW.EXCELHOMES.COM		31 ⁶ 29 ⁶ SOMERSET 1A 2ND STORY	
		DRAWN BY:	CHECKED BY:	DATE:	SCALE: 1/4"=1'-0"
REVISIONS/REV. STD 10-31-01			DISK NO. STD		
01/14/02 08:24					